

Anti-Zebrafish Catalase/CAT Antibody Picoband®

Catalog Number: AZQ9PT92

About CAT

Predicted to enable catalase activity and heme binding activity. Acts upstream of or within response to copper ion. Predicted to be located in peroxisomal matrix. Predicted to be active in mitochondrion and peroxisome. Is expressed in several structures, including digestive system; eye; female organism; gill; and ventricular zone. Human ortholog(s) of this gene implicated in several diseases, including acatalasia; eye disease (multiple); lung disease (multiple); osteonecrosis; and pseudoxanthoma elasticum. Orthologous to human CAT (catalase).

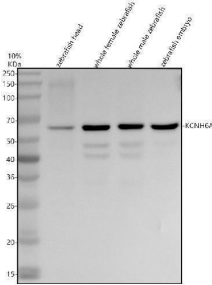
Overview

Product Name	Anti-Zebrafish Catalase/CAT Antibody Picoband®
Reactive Species	Zebrafish
Description	Boster Bio Anti-Zebrafish Catalase/CAT Antibody Picoband® catalog # AZQ9PT92. Tested in WB applications. This antibody reacts with Zebrafish. The brand Picoband indicates this is a premium antibody that guarantees superior quality, high affinity, and strong signals with minimal background in Western blot applications. Only our best-performing antibodies are designated as Picoband, ensuring unmatched performance.
Application	WB
Clonality	Polyclonal
Formulation	Each vial contains 4 mg Trehalose, 0.9 mg NaCl, 0.2 mg Na ₂ HPO ₄ .
Storage Instructions	At -20°C for one year from date of receipt. After reconstitution, at 4°C for one month. It can also be aliquotted and stored frozen at -20°C for six months. Avoid repeated freezing and thawing.
Host	Rabbit
Uniprot ID	Q9PT92

Technical Details

Immunogen	E.coli-derived Zebrafish Catalase/CAT recombinant protein (Position: Q53-H510).
Form	Lyophilized
Concentration	Adding 0.2 ml of distilled water will yield a concentration of 500 ug/ml.
Purification	Immunogen affinity purified.
Suggested Dilutions	Western blot, 0.25-0.5 ug/ml, Zebrafish

Anti-Zebrafish Catalase/CAT Antibody Picoband® (AZQ9PT92) Images



Western blot analysis of Catalase/CAT using anti-Catalase/CAT antibody (AZQ9PT92). Electrophoresis was performed on a 10% SDS-PAGE gel at 80V (Stacking gel) / 120V (Resolving gel) for 2 hours. The sample well of each lane was loaded with 30 ug of sample under reducing conditions. Lane 1: zebrafish head tissue lysates, Lane 2: whole female zebrafish tissue lysates, Lane 3: whole male zebrafish tissue lysates, Lane 4: zebrafish embryo tissue lysates. After electrophoresis, proteins were transferred to a nitrocellulose membrane at 150 mA for 50-90 minutes. Blocked the membrane with 5% non-fat milk/TBS for 1.5 hour at RT. The membrane was incubated with rabbit anti-Catalase/CAT antigen affinity purified polyclonal antibody (AZQ9PT92) at 0.5 ug/mL overnight at 4°C, then washed with TBS-0.1% Tween 3 times with 5 minutes each and probed with a goat anti-rabbit IgG-HRP secondary antibody at a dilution of 1:5000 for 1.5 hour at RT. The signal is developed using an ECL Plus Western Blotting Substrate (Catalog # AR1196-200) with Tanon 5200 system. A specific band was detected for Catalase/CAT at approximately 59 kDa. The expected band size for Catalase/CAT is at 59 kDa.

Submit a product review to [Biocompare.com](https://www.biocompare.com)

Submit a review of this product to [Biocompare.com](https://www.biocompare.com) to receive a \$20 Amazon.com giftcard! Your reviews help your fellow scientists make the right decisions. Thank you for your contribution.



Anti-Zebrafish Catalase/CAT Antibody

For Research Use Only. Not for use in diagnostic procedures.