

Anti-Zebrafish IGF2A Antibody Picoband®

Catalog Number: AZQ9PUD0

About IGF2A

Enables insulin-like growth factor receptor binding activity. Acts upstream of or within notochord development; somitogenesis; and sprouting angiogenesis. Predicted to be located in extracellular region. Predicted to be active in extracellular space. Is expressed in several structures, including brain; digestive system; female organism; musculature system; and notochord. Human ortholog(s) of this gene implicated in Silver-Russell syndrome; choriocarcinoma; hepatocellular carcinoma; and rheumatoid arthritis. Orthologous to human IGF2 (insulin like growth factor 2).

Overview

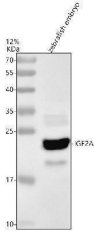
Product Name	Anti-Zebrafish IGF2A Antibody Picoband®
Reactive Species	Zebrafish
Description	Adding 0.2 ml of distilled water will yield a concentration of 500 ug/ml. Adding 0.2 ml of distilled water will yield a concentration of 500 ug/ml. Immunogen affinity purified. Enables insulin-like growth factor receptor binding activity. Acts upstream of or within notochord development; somitogenesis; and sprouting angiogenesis. Predicted to be located in extracellular region. Predicted to be active in extracellular space. Is expressed in several structures, including brain; digestive system; female organism; musculature system; and notochord. Human ortholog(s) of this gene implicated in Silver-Russell syndrome; choriocarcinoma; hepatocellular carcinoma; and rheumatoid arthritis. Orthologous to human IGF2 (insulin like growth factor 2). E.coli-derived Zebrafish IGF2A recombinant protein (Position: G41-K197) anti-zebrafish-igf2a-antibody-azq9pud0-boster Anti-Zebrafish IGF2A Antibody Picoband® Boster Bio Anti-Zebrafish IGF2A Antibody Picoband® catalog # AZQ9PUD0. Tested in WB, IHC applications. This antibody reacts with Zebrafish. The brand Picoband indicates this is a premium antibody that guarantees superior quality, high affinity, and strong signals with minimal background in Western blot applications. Only our best-performing antibodies are designated as Picoband, ensuring unmatched performance.
Application	IHC, WB
Clonality	Polyclonal
Formulation	Each vial contains 4 mg Trehalose, 0.9 mg NaCl, 0.2 mg Na ₂ HPO ₄ .
Storage Instructions	At -20°C for one year from date of receipt. After reconstitution, at 4°C for one month. It can also be aliquotted and stored frozen at -20°C for six months. Avoid repeated freezing and thawing.
Host	Rabbit
Uniprot ID	Q9PUD0

Technical Details

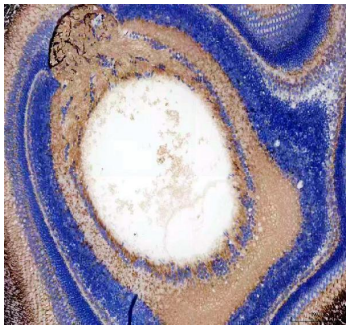
Immunogen	E.coli-derived Zebrafish IGF2A recombinant protein (Position: G41-K197)
Form	Lyophilized

Concentration	Adding 0.2 ml of distilled water will yield a concentration of 500 ug/ml.
Purification	Immunogen affinity purified.
Suggested Dilutions	Western blot, 0.25-0.5 ug/ml, Zebrafish Immunohistochemistry(Paraffin-embedded Section), 2-5 ug/ml, Zebrafish

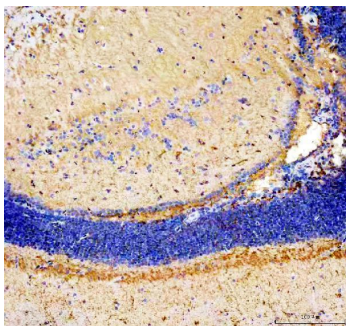
Anti-Zebrafish IGF2A Antibody Picoband® (AZQ9PUD0) Images



Western blot analysis of IGF2A using anti-IGF2A antibody (AZQ9PUD0). Electrophoresis was performed on a 12% SDS-PAGE gel at 80V (Stacking gel) / 120V (Resolving gel) for 2 hours. The sample well of each lane was loaded with 30 ug of sample under reducing conditions. Lane 1: zebrafish embryo tissue lysates. After electrophoresis, proteins were transferred to a nitrocellulose membrane at 150 mA for 50-90 minutes. Blocked the membrane with 5% non-fat milk/TBS for 1.5 hour at RT. The membrane was incubated with rabbit anti-IGF2A antigen affinity purified polyclonal antibody (AZQ9PUD0) at 0.5 ug/mL overnight at 4°C, then washed with TBS-0.1% Tween 3 times with 5 minutes each and probed with a goat anti-rabbit IgG-HRP secondary antibody at a dilution of 1:5000 for 1.5 hour at RT. The signal is developed using an ECL Plus Western Blotting Substrate (Catalog # AR1196-200) with Tanon 5200 system. A specific band was detected for IGF2A at approximately 22 kDa. The expected band size for IGF2A is at 22 kDa.

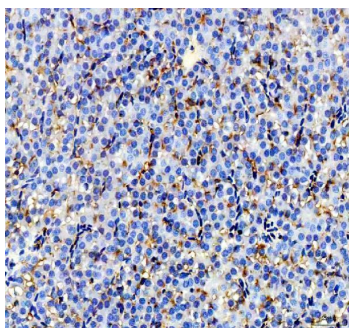


IHC analysis of IGF2A using anti-IGF2A antibody (AZQ9PUD0). IGF2A was detected in a paraffin-embedded section of zebrafish eye tissue. Heat mediated antigen retrieval was performed in EDTA buffer (pH 8.0, epitope retrieval solution). The tissue section was blocked with 10% goat serum. The tissue section was then incubated with 2 ug/ml rabbit anti-IGF2A Antibody (AZQ9PUD0) overnight at 4°C. Peroxidase Conjugated Goat Anti-rabbit IgG was used as secondary antibody and incubated for 30 minutes at 37°C. The tissue section was developed using HRP Conjugated Rabbit IgG Super Vision Assay Kit (Catalog # SV0002) with DAB as the chromogen.



IHC analysis of IGF2A using anti-IGF2A antibody (AZQ9PUD0). IGF2A was detected in a paraffin-embedded section of zebrafish brain tissue. Heat mediated antigen retrieval was performed in EDTA buffer (pH 8.0, epitope retrieval solution). The tissue section was blocked with 10% goat serum. The tissue section was then incubated with 2 ug/ml rabbit anti-IGF2A Antibody (AZQ9PUD0) overnight at 4°C. Peroxidase Conjugated Goat Anti-rabbit IgG was used as secondary antibody and incubated for 30 minutes at 37°C. The tissue section was developed using HRP Conjugated Rabbit IgG Super Vision Assay Kit (Catalog # SV0002) with DAB as the chromogen.

IHC analysis of IGF2A using anti-IGF2A antibody (AZQ9PUD0). IGF2A was detected in a paraffin-embedded section of zebrafish liver tissue. Heat mediated antigen retrieval was performed in EDTA buffer (pH 8.0, epitope retrieval solution). The tissue section was blocked with 10% goat serum. The tissue section was then incubated with 2 ug/ml rabbit anti-IGF2A Antibody (AZQ9PUD0) overnight at



4°C. Peroxidase Conjugated Goat Anti-rabbit IgG was used as secondary antibody and incubated for 30 minutes at 37°C. The tissue section was developed using HRP Conjugated Rabbit IgG Super Vision Assay Kit (Catalog # SV0002) with DAB as the chromogen.

Submit a product review to [Biocompare.com](https://www.biocompare.com)

Submit a review of this product to [Biocompare.com](https://www.biocompare.com) to receive a \$20 Amazon.com giftcard! Your reviews help your fellow scientists make the right decisions. Thank you for your contribution.



Anti-Zebrafish IGF2A Antibody

For Research Use Only. Not for use in diagnostic procedures.