

Anti-Zebrafish UBE2Ia/b Antibody Picoband®

Catalog Number: AZQ9W6H5

About UBE2Ia/b

Enables SUMO transferase activity. Acts upstream of or within several processes, including embryonic heart tube development; hematopoietic stem cell homeostasis; and protein sumoylation. Predicted to be active in nucleus. Is expressed in several structures, including immature eye; nervous system; neural crest; pectoral fin bud; and pharyngeal pouch. Orthologous to human UBE2I (ubiquitin conjugating enzyme E2 I).

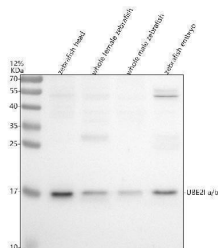
Overview

Product Name	Anti-Zebrafish UBE2Ia/b Antibody Picoband®
Reactive Species	Zebrafish
Description	Boster Bio Anti-Zebrafish UBE2Ia/b Antibody Picoband® catalog # AZQ9W6H5. Tested in WB applications. This antibody reacts with Zebrafish. The brand Picoband indicates this is a premium antibody that guarantees superior quality, high affinity, and strong signals with minimal background in Western blot applications. Only our best-performing antibodies are designated as Picoband, ensuring unmatched performance.
Application	WB
Clonality	Polyclonal
Formulation	Each vial contains 4 mg Trehalose, 0.9 mg NaCl, 0.2 mg Na ₂ HPO ₄ .
Storage Instructions	At -20°C for one year from date of receipt. After reconstitution, at 4°C for one month. It can also be aliquotted and stored frozen at -20°C for six months. Avoid repeated freezing and thawing.
Host	Rabbit
Uniprot ID	Q9W6H5/Q9DDJ0

Technical Details

Immunogen	E.coli-derived zebrafish UBE2Ia/b recombinant protein (Position: N124-S158).
Form	Lyophilized
Concentration	Adding 0.2 ml of distilled water will yield a concentration of 500 ug/ml.
Purification	Immunogen affinity purified.
Suggested Dilutions	Western blot, 0.25-0.5 ug/ml, Zebrafish

Anti-Zebrafish UBE2la/b Antibody Picoband® (AZQ9W6H5) Images



Western blot analysis of UBE2la/b using anti-UBE2la/b antibody (AZQ9W6H5). Electrophoresis was performed on a 12% SDS-PAGE gel at 80V (Stacking gel) / 120V (Resolving gel) for 2 hours. The sample well of each lane was loaded with 30 ug of sample under reducing conditions. Lane 1: zebrafish head tissue lysates, Lane 2: whole female zebrafish tissue lysates, Lane 3: whole male zebrafish tissue lysates, Lane 4: zebrafish embryo tissue lysates. After electrophoresis, proteins were transferred to a nitrocellulose membrane at 150 mA for 50-90 minutes. Blocked the membrane with 5% non-fat milk/TBS for 1.5 hour at RT. The membrane was incubated with rabbit anti-UBE2la/b antigen affinity purified polyclonal antibody (AZQ9W6H5) at 0.5 ug/mL overnight at 4°C, then washed with TBS-0.1%Tween 3 times with 5 minutes each and probed with a goat anti-rabbit IgG-HRP secondary antibody at a dilution of 1:5000 for 1.5 hour at RT. The signal is developed using an ECL Plus Western Blotting Substrate (Catalog # AR1196-200) with Tanon 5200 system. A specific band was detected for UBE2la/b at approximately 18 kDa. The expected band size for UBE2la/b is at 18 kDa.

Submit a product review to Biocompare.com

Submit a review of this product to Biocompare.com to receive a \$20 Amazon.com giftcard! Your reviews help your fellow scientists make the right decisions. Thank you for your contribution.



Anti-Zebrafish UBE2la/b Antibody

For Research Use Only. Not for use in diagnostic procedures.