

Anti-Zebrafish LFT2 Antibody Picoband®

Catalog Number: AZQ9W617

About LFT2

Predicted to enable cytokine activity. Acts upstream of or within heart field specification and mesoderm development. Predicted to be located in extracellular region. Predicted to be active in extracellular space. Is expressed in several structures, including blastodisc; cardiovascular system; central nervous system; hypoblast; and mesoderm. Human ortholog(s) of this gene implicated in congenital heart disease. Orthologous to several human genes including LEFTY2 (left-right determination factor 2).

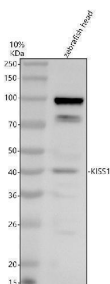
Overview

Product Name	Anti-Zebrafish LFT2 Antibody Picoband®
Reactive Species	Zebrafish
Description	Boster Bio Anti-Zebrafish LFT2 Antibody Picoband® catalog # AZQ9W617. Tested in WB applications. This antibody reacts with Zebrafish. The brand Picoband indicates this is a premium antibody that guarantees superior quality, high affinity, and strong signals with minimal background in Western blot applications. Only our best-performing antibodies are designated as Picoband, ensuring unmatched performance.
Application	WB
Clonality	Polyclonal
Formulation	Each vial contains 4 mg Trehalose, 0.9 mg NaCl, 0.2 mg Na ₂ HPO ₄ .
Storage Instructions	At -20°C for one year from date of receipt. After reconstitution, at 4°C for one month. It can also be aliquotted and stored frozen at -20°C for six months. Avoid repeated freezing and thawing.
Host	Rabbit
Uniprot ID	Q9W617

Technical Details

Immunogen	E.coli-derived Zebrafish LFT2 recombinant protein (Position: F20-Q256).
Form	Lyophilized
Concentration	Adding 0.2 ml of distilled water will yield a concentration of 500 ug/ml.
Purification	Immunogen affinity purified.
Suggested Dilutions	Western blot, 0.25-0.5 ug/ml, Zebrafish

Anti-Zebrafish LFT2 Antibody Picoband® (AZQ9W6I7) Images



Western blot analysis of LFT2 using anti-LFT2 antibody (AZQ9W6I7). Electrophoresis was performed on a 10% SDS-PAGE gel at 80V (Stacking gel) / 120V (Resolving gel) for 2 hours. The sample well of each lane was loaded with 30 ug of sample under reducing conditions. Lane 1: zebrafish head tissue lysates. After electrophoresis, proteins were transferred to a nitrocellulose membrane at 150 mA for 50-90 minutes. Blocked the membrane with 5% non-fat milk/TBS for 1.5 hour at RT. The membrane was incubated with rabbit anti-LFT2 antigen affinity purified polyclonal antibody (AZQ9W6I7) at 0.5 ug/mL overnight at 4°C, then washed with TBS-0.1% Tween 3 times with 5 minutes each and probed with a goat anti-rabbit IgG-HRP secondary antibody at a dilution of 1:5000 for 1.5 hour at RT. The signal is developed using an ECL Plus Western Blotting Substrate (Catalog # AR1196-200) with Tanon 5200 system. A specific band was detected for LFT2 at approximately 41 kDa. The expected band size for LFT2 is at 41 kDa.

Submit a product review to Biocompare.com

Submit a review of this product to Biocompare.com to receive a \$20 Amazon.com giftcard! Your reviews help your fellow scientists make the right decisions. Thank you for your contribution.



Anti-Zebrafish LFT2 Antibody

For Research Use Only. Not for use in diagnostic procedures.