

Anti-Human IL-17E Biotin Conjugated IL25 Monoclonal Antibody

Catalog Number: B04429

About IL25

Anti-IL17E recognizes IL-17E (also known as IL25). IL-17E is produced and secreted by intra-epithelial lymphocytes, lung epithelial cells, alveolar macrophages, eosinophils, basophils, NKT cells, mast cells and cells of the gastro-intestinal tract and uterus. IL-17E stimulates the production of Th2-type cytokines. IL-17E limits Th17 cell development by inducing the expression of IL-13 by dendritic cells or by inhibiting IL-23 production by macrophages. Induces activation of NF-kappa-B and stimulates production of the proinflammatory chemokine IL-8. A number of cytokines, including IL-17E, have been implicated as oncogenes, reflecting the importance of these proteins in cell growth and survival. Anti-IL-17E cytokine antibody is ideal for investigators involved in Immunology, Signal Transduction research, Cancer and pro-inflammatory pathologies.

Overview

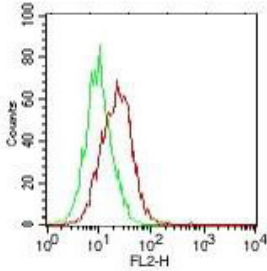
| | |
|----------------------|---|
| Product Name | Anti-Human IL-17E Biotin Conjugated IL25 Monoclonal Antibody |
| Reactive Species | Human |
| Description | Boster Bio Anti-Human IL-17E Biotin Conjugated IL25 Monoclonal Antibody (Catalog # B04429). Tested in Flow Cytometry, WB applications. This antibody reacts with Human. |
| Conjugate | Biotin |
| Application | ELISA, Flow Cytometry, WB |
| Clonality | Monoclonal Clone: 11K8B1 IgG1 |
| Formulation | 0.02 M Potassium Phosphate, 0.15 M Sodium Chloride, pH 7.2, antibody formulated with stabilizing protein (10 mg/mL) - Immunoglobulin and Protease free, 0.01% (w/v) Sodium Azide This antibody is supplied in a stabilized formulation. Compatibility with conjugation reactions depends on the chemistry of the conjugation method used. For conjugation methods that are not compatible with the stabilizing components present in this formulation, a carrier-free antibody format is required. |
| Storage Instructions | Store vial at 4°C prior to restoration. Restore with 0.1 mL of deionized water (or equivalent). For extended storage aliquot contents and freeze at -20°C or below. Avoid cycles of freezing and thawing. Centrifuge product if not completely clear after standing at room temperature. This product is stable for several weeks at 4°C as an undiluted liquid. Dilute only prior to immediate use. Expiration date is one (1) year from date of opening. (Ship at ambient temperature.) |
| Host | Mouse |
| Uniprot ID | Q9H293 |

Technical Details

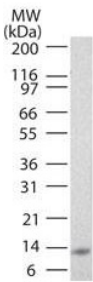
| | |
|-----------|--|
| Immunogen | Anti-IL-17E (MOUSE) Monoclonal Antibody was produced in mouse by repeated immunizations with mature full length recombinant human IL-17E produced in E.coli followed by hybridoma development. |
|-----------|--|

| | |
|----------------------------|---|
| Predicted Reactive Species | Bovine, Mammalian |
| Cross Reactivity | No cross reactivity with other proteins. |
| Isotype | IgG1 |
| Form | Lyophilized |
| Concentration | 1.0 mg/mL by UV absorbance at 280 nm |
| Purification | This product was purified from concentrated tissue culture supernate by Protein G chromatography followed by extensive dialysis against the buffer stated above. This antibody is specific for human IL-17E protein. A BLAST analysis was used to suggest cross-reactivity with IL-17E from human sources based on 100% homology with the immunizing sequence. Cross-reactivity with IL-17E from other sources has not been determined. |
| Suggested Dilutions | ELISA: 1:10,000 - 1:50,000 Flow Cytometry: 1µg/mL Fluorochrome Protein Value: 10-20 WB: 0.5µg/mL This purified antibody has been tested for use in Flow Cytometry and western blotting. Specific conditions for reactivity should be optimized by the end user. |

Anti-Human IL-17E Biotin Conjugated IL25 Monoclonal Antibody (B04429) Images



Anti-IL-17E Antibody - Flow Cytometry Cells: PC3 cells
Primary antibody: 1 ug of IL-17E (red), control (green)
Secondary antibody: anti-mouse IgG PE conjugated secondary antibody



Anti-IL-17E Biotin Conjugated Antibody - Western Blot.
Western Blot of Mouse anti-IL-17E antibody. Load: full length recombinant protein. Primary Antibody: anti-IL-17E antibody (209-301-C58) at 0.5 ug/mL.

Submit a product review to Biocompare.com

Submit a review of this product to Biocompare.com to receive a \$20 Amazon.com giftcard! Your reviews help your fellow scientists make the right decisions. Thank you for your contribution.



Anti-Human IL-17E Biotin Conjugated IL25 Monoclonal Antibody

For Research Use Only. Not for use in diagnostic procedures.