

## Anti-Human Ig Light Chains IGKC Rabbit Monoclonal Antibody Biotin Conjugated, Clone#RM129

Catalog Number: B05470

### Overview

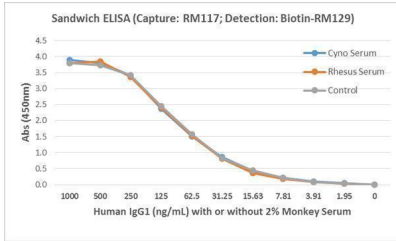
Product Name	Anti-Human Ig Light Chains IGKC Rabbit Monoclonal Antibody Biotin Conjugated, Clone#RM129
Reactive Species	Human
Description	Boster Bio Anti-Human Ig Light Chains IGKC Rabbit Monoclonal Antibody Biotin Conjugated, Clone#RM129 (Catalog # B05470). Tested in ELISA, ICC, IHC, Flow Cytometry applications. This antibody reacts with Human.
Application	ELISA, Flow Cytometry, IHC, ICC
Clonality	Monoclonal RM129
Formulation	50% Glycerol/PBS with 1% stabilizing protein and 0.09% sodium azide This antibody is supplied in a stabilized formulation. Compatibility with conjugation reactions depends on the chemistry of the conjugation method used. For conjugation methods that are not compatible with the stabilizing components present in this formulation, a carrier-free antibody format is required.
Storage Instructions	Store at -20°C for one year. Avoid repeated freeze-thaw cycles.
Host	Rabbit
Uniprot ID	P01834

### Technical Details

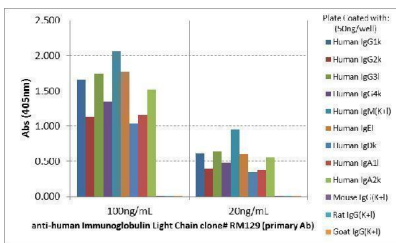
Immunogen	Human IgG
Cross Reactivity	This antibody reacts to both kappa and lambda light chains of human immunoglobulins. The antibody does not react to monkey (Cyno or Rhesus) IgG, mouse IgG, rat IgG, or goat IgG.
Isotype	Rabbit IgG
Form	Liquid
Concentration	1 mg/mL
Purification	Protein A affinity purified from an animal origin-free culture supernatant
Suggested Dilutions	ELISA: 0.02 µg/mL - 0.25 µg/mL Immunocytochemistry (ICC): 0.5 µg/mL - 2 µg/mL Immunohistochemistry (IHC): 0.5 µg/mL - 2 µg/mL Flow Cytometry (FC): 0.5 µg/mL - 2 µg/mL



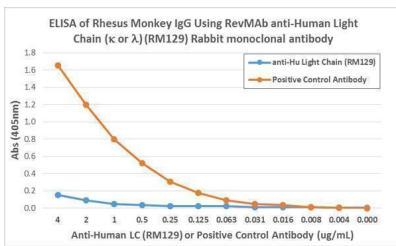
## Anti-Human Ig Light Chains IGKC Rabbit Monoclonal Antibody Biotin Conjugated, Clone#RM129 (B05470) Images



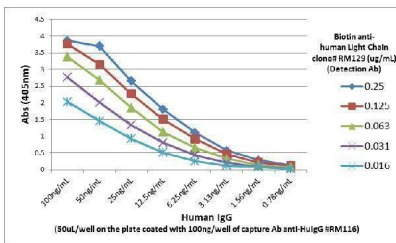
ELISA result showing specificity Detection of human IgG1 in monkey serum, using RM117 (capture) and biotin-RM129 (detection) as a Sandwich ELISA pair. HRP conjugated streptavidin and TMB were used to yield the colorimetric reaction.



ELISA result showing specificity ELISA showing RM129 reacts only to kappa and lambda light chain of all human immunoglobulins, not to mouse IgG, rat IgG, or goat IgG.



ELISA result showing specificity ELISA showing RM129 does not react to monkey IgG. The plate was coated with Rhesus monkey IgG. A serial dilution of RM129 and a monkey IgG binding antibody (positive control) was used as the detection antibody.



ELISA result showing specificity A titer Sandwich ELISA using Biotinylated RM129 as the detection antibody. The plate, coated with the capture antibody anti-human IgG RM116, was loaded with different amounts of human IgG. A serial dilution of Biotin RM129 was used as the detection antibody, followed with an alkaline phosphatase conjugated streptavidin.

Submit a product review to [Biocompare.com](https://www.biocompare.com)

Submit a review of this product to [Biocompare.com](https://www.biocompare.com) to receive a \$20 Amazon.com giftcard! Your reviews help your fellow scientists make the right decisions. Thank you for your contribution.



Anti-Human Ig Light Chains IGKC Rabbit Monoclonal Antibody Biotin Conjugated, Clone#RM129

For Research Use Only. Not for use in diagnostic procedures.