

## Anti-Methyl-CpG-binding protein 2 MeCP2 Antibody

Catalog Number: CI1047

### About MECP2

MeCP2 is a chromosomal protein with abundant binding sites in the chromatin. It belongs to the family of methyl CpG binding proteins which also comprises MBD1, MBD2, MBD3 and MBD4. MeCP2 can bind specifically to methylated promoters, thereby repressing transcription. This transcriptional repression is mediated through interaction with histone deacetylase and the corepressor SIN3A. MeCP2 also is essential for development. Mutations in MeCP2 are the cause of several types of mental retardation including Rett syndrome, a progressive neurological disorder that causes mental retardation in females and mental retardation syndromic X-linked type 13, and may also be involved in Angelman syndrome and susceptibility to some types of autism.

### Overview

Product Name	Anti-Methyl-CpG-binding protein 2 MeCP2 Antibody
Reactive Species	Human
Description	Boster Bio Anti-Methyl-CpG-binding protein 2 MeCP2 Antibody (Catalog# CI1047). Tested in ChIP, ELISA, WB applications. This antibody reacts with Human.
Application	ChIP, ELISA, WB
Clonality	Polyclonal
Formulation	Affinity purified polyclonal antibody in PBS containing 0.05% azide and 0.05% ProClin 300.
Storage Instructions	Store at -20°C. For long-term storage, store at -80°C. Avoid multiple freeze-thaw cycles.
Host	Rabbit
Uniprot ID	P51608

### Technical Details

Immunogen	This antibody is raised in rabbit against MeCP2 (Methyl-CpG-binding domain protein 2), using a KLH-conjugated synthetic peptide containing a sequence from the C-terminal part of the protein.
Recommended Detection Systems	Boster recommends Enhanced Chemiluminescent Kit with anti-Rabbit IgG (EK1002) for Western blot. Boster recommends high sensitivity ChIP-seq Kit (CK1001 & CK1002) for Chromatin Immunoprecipitation.
Form	Liquid
Concentration	0.5-1mg/ml, actual concentration vary by lot. Use suggested dilution ratio to decide dilution procedure.
Purification	Affinity purified

**Suggested Dilutions**

Dilute the sample so that the expected range of concentrations fall within the detection range of this kit.

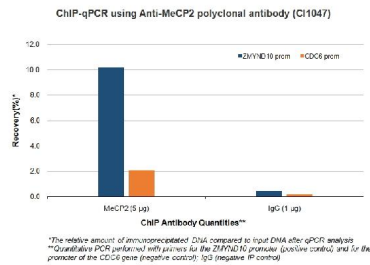
If the expected range of concentration is unknown, a pilot test should be conducted to decide the optimal dilution ratio for your samples.

Some PubMed article(s) citing the expression level of this target are as follows:

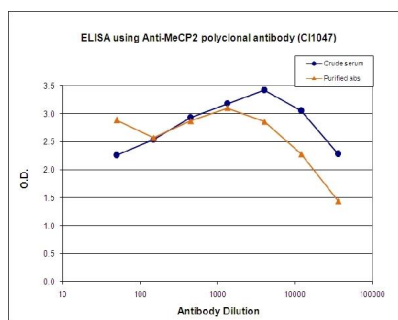
Boster Bio's internal QC testing used:

User needs to optimize the dilution ratio for this antibody.

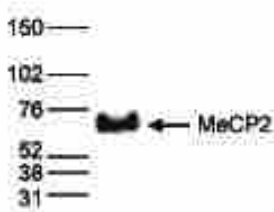
## Anti-Methyl-CpG-binding protein 2 MeCP2 Antibody (CI1047) Images



ChIP assays were performed using human osteosarcoma (U2OS) cells, Anti-Suz12 polyclonal antibody (Catalog # CI1047) and optimized PCR primer sets. Sheared chromatin from 1x10<sup>6</sup> cells and 5 ug of antibody were used per ChIP experiment. IgG (1 ug/IP) was used as a negative IP control. Quantitative PCR was performed with primers for the promoter of the ZMYND10 gene, used as a positive control and for the promoter of the CDC6 gene, used as a negative control.



To determine the titer of the antibody, an ELISA was performed using a serial dilution of Anti-MeCP2 polyclonal antibody (Catalog # CI1047) and the crude serum. The plates were coated with the peptide used for immunization of the rabbit. By plotting the absorbance against the antibody dilution, the titer of the purified antibody was estimated to be: 1:32,900.



Western blot analysis of MeCP2 expression in nuclear extracts from HeLa cells (40

**Submit a product review to Biocompare.com**

Submit a review of this product to Biocompare.com to receive a \$20 Amazon.com giftcard! Your reviews help your fellow scientists make the right decisions. Thank you for your contribution.



Anti-Methyl-CpG-binding protein 2 MeCP2 Antibody