

# Anti-Human CD40 Monoclonal Antibody PE Conjugated, Flow Validated

Catalog Number: FC00068-PE

## Introduction

Clone HNK-1 reacts with human CD57, a 110 KDa glycoprotein, which is present on a subset of NK lymphocytes and on a subset of T lymphocytes. It also reacts with myelin-associated glycoprotein in neuroectodermal tissue as well as cells of small cell lung carcinoma.

This antibody is routinely tested by flow cytometric analysis. Flow cytometry and other applications were tested during antibody development by CapricoBio or are reported in the literature.

## Application Information

Each lot of this antibody has been pre-titrated and tested by flow cytometric analysis of human PBMCs such that 5ul of this product is sufficient for staining of 1 million cells in a 100ul staining volume or 100ul of whole blood. It is recommended that antibody reactivity be empirically titrated for optimal performance in the application of interest.

## Overview

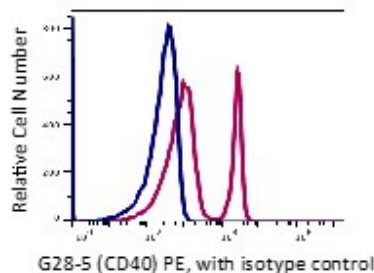
Product Name	Anti-Human CD40 Monoclonal Antibody PE Conjugated, Flow Validated
Reactive Species	Cynomolgus monkey, Human, Baboon, Rhesus monkey
Description	Boster Bio Anti-Human CD40 Monoclonal Antibody PE Conjugated, Flow Validated (Catalog# FC00068-PE). Tested in Flow Cytometry application(s). This antibody reacts with Human, Rhesus monkey, Cynomolgus monkey, Baboon.
Conjugate	PE
Application	Flow Cytometry
Clonality	Monoclonal Clone: G28-5
Formulation	PBS pH 7.2, 0.2% (w/v) BSA, 0.09% (w/v) sodium azide
Storage Instructions	Store at 2-8°C. Avoid repeated freeze-thaw cycles.
Host	Mouse
Uniprot ID	P25942

## Technical Details

Immunogen	Human tonsillar lymphocytes
Predicted Reactive Species	Bovine, Canine
Isotype	IgG1,k

Form	Liquid, in PBS, pH7.2, <0.09% NaN <sub>3</sub> and 0.2% (w/v) BSA
Concentration	0.5-1mg/ml, actual concentration vary by lot. Use suggested dilution ratio to decide dilution procedure.
Purification	Affinity column chromatography
Suggested Dilutions	<p>Dilute the sample so that the expected range of concentrations fall within the detection range of this kit.</p> <p>If the expected range of concentration is unknown, a pilot test should be conducted to decide the optimal dilution ratio for your samples.</p> <p>Some PubMed article(s) citing the expression level of this target are as follows:</p> <p>Boster Bio's internal QC testing used:</p> <p>User needs to optimize the dilution ratio for this antibody.</p>

## Anti-Human CD40 Monoclonal Antibody PE Conjugated, Flow Validated (FC00068-PE) Images



Lymphocytes gated PBMCs stained with PE conjugated anti-human CD40 (clone G28-5) (red histogram). Lymphocytes gated PBMCs stained with PE conjugated mouse IgG1 isotype control (Blue histogram). The data are generated by BD Accuri C6 Flow Cytometer and analyzed by FlowJo software.

### Submit a product review to Biocompare.com

Submit a review of this product to Biocompare.com to receive a \$20 Amazon.com giftcard! Your reviews help your fellow scientists make the right decisions. Thank you for your contribution.



Anti-Human CD40 Monoclonal Antibody PE Conjugated, Flow Validated