

## Anti-human CD14 Monoclonal Antibody Unconjugated, Flow Validated

Catalog Number: FC00137

### Introduction

Clone 26ic reacts with a nonfunctional domain of human CD14, a 53-55 kDa glycosylphosphatidylinositol (GPI)-anchored and single chain glycoprotein expressed at high levels on monocytes. Additionally, CD14 antibody reacts with interfollicular macrophages, reticular dendritic cells and some Langerhans cells. The binding of CD14 antibody does not inhibit CD14 mediated activities, and is useful for detecting CD14 expression by immunofluorescence and or immunocytochemical methods.

This antibody is routinely tested by flow cytometric analysis. Flow cytometry and other applications were tested during antibody development by CapricoBio or are reported in the literature.

### Application Information

Each lot of this antibody has been quality control tested by flow cytometric analysis of human PBMCs. For flow cytometric staining, the recommended use of this antibody is 0.5ug per 1x10<sup>6</sup> cells in 100ul of staining volume followed by any fluorescent conjugated anti-mouse secondary antibody. It is strongly suggested that the antibody reactivity be empirically titrated for optimal performance in the application of interest.

### About CD14

CD14, Cluster of differentiation 14, single-copy gene encoding 2 protein forms: a 50- to 55-kD glycosylphosphatidylinositol-anchored membrane protein (mCD14) and a monocyte or liver-derived soluble serum protein (sCD14) that lacks the anchor. By in situ hybridization and study of somatic cell hybrid DNA that the gene is located at bands 5q23-q31. CD14 acts as a co-receptor (along with the Toll-like receptor TLR 4 and MD-2) for the detection of bacterial lipopolysaccharide (LPS). CD14 can bind LPS only in the presence of lipopolysaccharide-binding protein (LBP). Although LPS is considered its main ligand, CD14 also recognizes other pathogen-associated molecular patterns.

### Overview

Product Name	Anti-human CD14 Monoclonal Antibody Unconjugated, Flow Validated
Reactive Species	Cynomolgus monkey, Human, Baboon, Rhesus monkey
Description	Boster Bio Anti-human CD14 Monoclonal Antibody Unconjugated, Flow Validated (Catalog# FC00137). Tested in Flow Cytometry application(s). This antibody reacts with Human, Rhesus monkey, Cynomolgus monkey, Baboon.
Application	Flow Cytometry
Clonality	Monoclonal Clone: 26ic
Formulation	PBS pH 7.2, 0.1% (w/v) BSA, 0.09% (w/v) sodium azide
Storage Instructions	Store at 2-8°C. Avoid repeated freeze-thaw cycles.
Host	Mouse

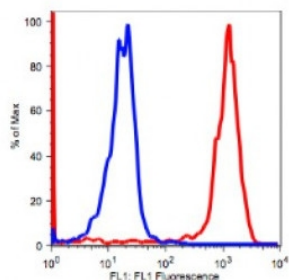
Uniprot ID

P08571

## Technical Details

Immunogen	Cultured human peripheral blood monocytes
Predicted Reactive Species	Bovine, Chicken, Xenopus Laevis, Xenopus Tropicalis, Zebrafish
Isotype	IgG2b,k
Form	Liquid
Concentration	0.5-1mg/ml, actual concentration vary by lot. Use suggested dilution ratio to decide dilution procedure.
Purification	Protein A purified
Suggested Dilutions	<p>Dilute the sample so that the expected range of concentrations fall within the detection range of this kit.</p> <p>If the expected range of concentration is unknown, a pilot test should be conducted to decide the optimal dilution ratio for your samples.</p> <p>Some PubMed article(s) citing the expression level of this target are as follows:</p> <p>Boster Bio's internal QC testing used:</p> <p>User needs to optimize the dilution ratio for this antibody.</p>

## Anti-human CD14 Monoclonal Antibody Unconjugated, Flow Validated (FC00137) Images



Monocytes gated PBMCs stained with purified anti-human CD14 (clone 26iC) followed by Goat anti-mouse IgG (H+L) Alexa Fluor 488 (red histogram). Monocytes gated PBMCs stained with only Goat anti-mouse IgG (H+L) Alexa Fluor 488 (Blue histogram).

### Submit a product review to Biocompare.com

Submit a review of this product to Biocompare.com to receive a \$20 Amazon.com giftcard! Your reviews help your fellow scientists make the right decisions. Thank you for your contribution.



Anti-human CD14 Monoclonal Antibody Unconjugated, Flow Validated