

## Anti-human CD38 Monoclonal Antibody Biotin Conjugated, Flow Validated

Catalog Number: FC00193-Biotin

### Introduction

CD38 is a type II transmembrane glycoprotein of 45 kDa with a protein core of 35 kDa. The CD38 antigen is expressed on essentially all pre-B lymphocytes, plasma cells, and thymocytes. It is also present on activated T lymphocytes, natural killer (NK) lymphocytes, myeloblasts, and erythroblasts. The antigen is expressed during the early stages of T- and B-lymphocyte differentiation, is lost during the intermediate stages of maturation, and then reappears during the final stages of maturation. The CD38 antigen is expressed on 90% of CD34+ cells, and is not expressed on pluripotent stem cells. Coexpression of CD38 antigen on CD34+ cells indicates lineage commitment of those cells. CD38 is a counter-receptor of CD31. It is also expressed in T- and B-acute lymphoblastic leukemia (ALL), Burkitts lymphoma, multiple myeloma, acute myeloid leukemia (AML), and chronic lymphocytic leukemia (CLL). The OKT10 antibody directed against human CD38 antigen.

This antibody is routinely tested by flow cytometric analysis. Flow cytometry and other applications were tested during antibody development by CapricoBio or are reported in the literature.

### Application Information

Each lot of this antibody has been pre-titrated and tested by flow cytometric analysis of human PBMCs such that 2ul of this product is sufficient for staining of 1 million cells in a 100ul staining volume or 100ul of whole blood followed by any flourochome conjugated streptavidin. It is recommended that antibody reactivity be empirically titrated for optimal performance in the application of interest.

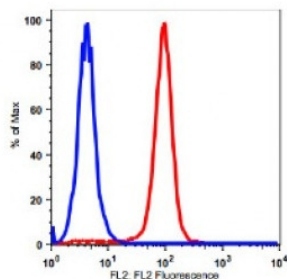
### Overview

|                      |   |
|----------------------|---|
| Product Name         | Anti-human CD38 Monoclonal Antibody Biotin Conjugated, Flow Validated   |
| Reactive Species     | Cynomolgus monkey, Human, Baboon, Rhesus monkey   |
| Description          | Boster Bio Anti-human CD38 Monoclonal Antibody Biotin Conjugated, Flow Validated (Catalog# FC00193-Biotin). Tested in Flow Cytometry application(s). This antibody reacts with Human, Rhesus monkey, Cynomolgus monkey, Baboon. |
| Conjugate            | Biotin  |
| Application          | Flow Cytometry  |
| Clonality            | Monoclonal Clone: OKT10   |
| Formulation          | PBS pH 7.2, 0.09% sodium azide  |
| Storage Instructions | Store at 2-8°C. Avoid repeated freeze-thaw cycles.  |
| Host                 | Mouse   |
| Uniprot ID           | P28907  |

## Technical Details

|                     |   |
|---------------------|---|
| Immunogen           | Human acute lymphoblastic leukaemia cells   |
| Isotype             | IgG1,k  |
| Form                | Liquid  |
| Concentration       | 0.5-1mg/ml, actual concentration vary by lot. Use suggested dilution ratio to decide dilution procedure.  |
| Purification        | Protein A purified  |
| Suggested Dilutions | <p>Dilute the sample so that the expected range of concentrations fall within the detection range of this kit.</p> <p>If the expected range of concentration is unknown, a pilot test should be conducted to decide the optimal dilution ratio for your samples.</p> <p>Some PubMed article(s) citing the expression level of this target are as follows:</p> <p>Boster Bio's internal QC testing used:</p> <p>User needs to optimize the dilution ratio for this antibody.</p> |

## Anti-human CD38 Monoclonal Antibody Biotin Conjugated, Flow Validated (FC00193-Biotin) Images



Lymphocyte-gated PBMCs stained with CD38 biotin followed by SA-PE (RED); Lymphocyte-gated PBMCs stained with IgG1 biotin followed by SA-PE (BLUE).

### Submit a product review to Biocompare.com

Submit a review of this product to Biocompare.com to receive a \$20 Amazon.com giftcard! Your reviews help your fellow scientists make the right decisions. Thank you for your contribution.



Anti-human CD38 Monoclonal Antibody Biotin Conjugated, Flow Validated