

Anti-human CD25 IL2RA Monoclonal Antibody Unconjugated, Flow Validated

Catalog Number: FC00214

Introduction

The antibody specifically binds to the 55 kDa type I transmembrane glycoprotein known as the low-affinity interleukin-2 receptor alpha chain subunit (IL2Ralpha, CD25). CD25 is expressed on regulatory T cells and on activated lymphocytes (T and B) and monocytes. CD25 expression on T and B lymphocytes is upregulated by antigenic or mitogenic stimulation.

This antibody is routinely tested by flow cytometric analysis. Flow cytometry and other applications were tested during antibody development by CapricoBio or are reported in the literature.

Application Information

Each lot of this antibody has been quality control tested by flow cytometric analysis of human PBMCs. For flow cytometric staining, the recommended use of this antibody is 0.5ug per 1×10^6 cells in 100ul of staining volume. It is strongly suggested that the antibody reactivity be empirically titrated for optimal performance in the application of interest.

About IL2RA

CD25 is the alpha chain of the IL-2 receptor. It is a type I transmembrane protein present on activated T cells, activated B cells, some thymocytes, myeloid precursors, and oligodendrocytes that associates with CD122 to form a heterodimer that can act as a high-affinity receptor for IL-2. The IL2R gene was mapped to 10p15-p14. CD25 is expressed in most B-cell neoplasms, some acute nonlymphocytic leukemias, neuroblastomas, and tumor infiltrating lymphocytes. Its soluble form, called sIL-2R may be elevated in these diseases and is occasionally used to track disease progression.

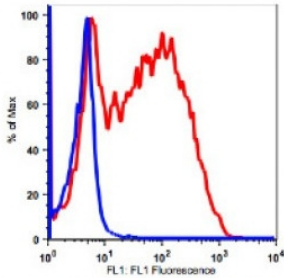
Overview

Product Name	Anti-human CD25 IL2RA Monoclonal Antibody Unconjugated, Flow Validated
Reactive Species	Human
Description	Boster Bio Anti-human CD25 IL2RA Monoclonal Antibody Unconjugated, Flow Validated (Catalog# FC00214). Tested in Flow Cytometry application(s). This antibody reacts with Human.
Application	Flow Cytometry
Clonality	Monoclonal Clone: 7G7B6
Formulation	PBS pH 7.2, 0.1% (w/v) BSA, 0.09% (w/v) sodium azide
Storage Instructions	Store at 2-8°C. Avoid repeated freeze-thaw cycles.
Host	Mouse
Uniprot ID	P01589

Technical Details

Immunogen	Influenza virus stimulated human peripheral blood mononuclear cells
Predicted Reactive Species	Bovine, Chicken, Xenopus Laevis, Xenopus Tropicalis, Zebrafish
Isotype	IgG2a,k
Form	Liquid
Concentration	0.5-1mg/ml, actual concentration vary by lot. Use suggested dilution ratio to decide dilution procedure.
Purification	Protein A purified
Suggested Dilutions	User needs to optimize the dilution ratio for this antibody.

Anti-human CD25 IL2RA Monoclonal Antibody Unconjugated, Flow Validated (FC00214) Images



Lymphocytes gated PHA stimulated (3days) fresh PBMCs stained with purified anti-human CD25 (clone 7G7B6) followed by Goat anti-mouse IgG (H+L) Alexa Fluor 488 (red histogram). Lymphocytes gated PHA stimulated PBMCs stained with only Goat anti-mouse IgG (H+L) Alexa Fluor 488 (blue histogram).

Submit a product review to Biocompare.com

Submit a review of this product to Biocompare.com to receive a \$20 Amazon.com giftcard! Your reviews help your fellow scientists make the right decisions. Thank you for your contribution.



Anti-human CD25 IL2RA Monoclonal Antibody Unconjugated, Flow Validated