

Anti-Human CD86 Monoclonal Antibody PE Conjugated, Flow Validated

Catalog Number: FC00220-PE

Introduction

The antibody specifically binds to the 55 kDa type I transmembrane glycoprotein known as the low-affinity interleukin-2 receptor alpha chain subunit (IL2Ralpha, CD25). CD25 is expressed on regulatory T cells and on activated lymphocytes (T and B) and monocytes. CD25 expression on T and B lymphocytes is upregulated by antigenic or mitogenic stimulation.

This antibody is routinely tested by flow cytometric analysis. Flow cytometry and other applications were tested during antibody development by CapricoBio or are reported in the literature.

Application Information

Each lot of this antibody has been pre-titrated and tested by flow cytometric analysis of human PBMCs such that 10ul of this product is sufficient for staining of 1 million cells in a 100ul staining volume or 100ul of whole blood. It is recommended that antibody reactivity be empirically titrated for optimal performance in the application of interest.

About CD86

CD25 is the alpha chain of the IL-2 receptor. It is a type I transmembrane protein present on activated T cells, activated B cells, some thymocytes, myeloid precursors, and oligodendrocytes that associates with CD122 to form a heterodimer that can act as a high-affinity receptor for IL-2. The IL2R gene was mapped to 10p15-p14. CD25 is expressed in most B-cell neoplasms, some acute nonlymphocytic leukemias, neuroblastomas, and tumor infiltrating lymphocytes. Its soluble form, called sIL-2R may be elevated in these diseases and is occasionally used to track disease progression.

Overview

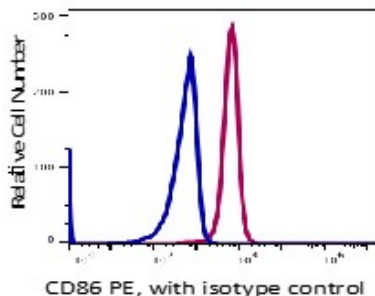
Product Name	Anti-Human CD86 Monoclonal Antibody PE Conjugated, Flow Validated
Reactive Species	Cynomolgus monkey, Human, Baboon, Rhesus monkey
Description	Boster Bio Anti-Human CD86 Monoclonal Antibody PE Conjugated, Flow Validated (Catalog# FC00220-PE). Tested in Flow Cytometry application(s). This antibody reacts with Human, Rhesus monkey, Cynomolgus monkey, Baboon.
Conjugate	PE
Application	Flow Cytometry
Clonality	Monoclonal Clone: BU63
Formulation	PBS pH 7.2, 0.2% (w/v) BSA, 0.09% (w/v) sodium azide
Storage Instructions	Store at 2-8°C. Avoid repeated freeze-thaw cycles.
Host	Mouse

Uniprot ID	P42081
------------	--------

Technical Details

Immunogen	B-lymphoblastoid cell line ARH 77
Predicted Reactive Species	Bovine, Canine
Isotype	IgG1,k
Form	Liquid, in PBS, pH7.2, <0.09% NaN3 and 0.2% (w/v) BSA
Concentration	0.5-1mg/ml, actual concentration vary by lot. Use suggested dilution ratio to decide dilution procedure.
Purification	Affinity column chromatography
Suggested Dilutions	<p>Dilute the sample so that the expected range of concentrations fall within the detection range of this kit.</p> <p>If the expected range of concentration is unknown, a pilot test should be conducted to decide the optimal dilution ratio for your samples.</p> <p>Some PubMed article(s) citing the expression level of this target are as follows:</p> <p>Boster Bio's internal QC testing used:</p> <p>User needs to optimize the dilution ratio for this antibody.</p>

Anti-Human CD86 Monoclonal Antibody PE Conjugated, Flow Validated (FC00220-PE) Images



Monocytes gated PBMCs stained with PE conjugated anti-human CD86 (clone BU63) (red histogram). Monocytes gated PBMCs stained with PE conjugated mouse IgG1 isotype control (Blue histogram). The data are generated by BD Accuri C6 Flow Cytometer and analyzed by FlowJo software.

Submit a product review to Biocompare.com

Submit a review of this product to Biocompare.com to receive a \$20 Amazon.com giftcard! Your reviews help your fellow scientists make the right decisions. Thank you for your contribution.



Anti-Human CD86 Monoclonal Antibody PE Conjugated, Flow Validated