

Anti-human CD5 Monoclonal Antibody Biotin Conjugated, Flow Validated

Catalog Number: FC00480-Biotin

Introduction

The clone OKT-1 (CD5) is a 67 kDa protein and a member of the scavenger receptor cysteine-rich protein superfamily (SRCR). It is expressed on T lymphocytes, thymocytes, and IgM-secreting B cells (B-1 cells).

This antibody is routinely tested by flow cytometric analysis. Flow cytometry and other applications were tested during antibody development by CapricoBio or are reported in the literature.

Application Information

Each lot of this antibody has been quality control tested by flow cytometric analysis of human PBMCs. For flow cytometric staining, the recommended dose of this antibody is 0.5ug per 1x10⁶ cells in 100ul of staining volume followed by a fluorescent conjugated streptavidin (SA-PE). It is strongly suggested that the antibody reactivity be empirically titrated for optimal performance in the application of interest.

About CD5

CD5, also known as T1 or LEU1, is a cluster of differentiation found on a subset of IgM-secreting B cells called B-1 cells, and also on T cells. It is mapped to 11q12.2. Although CD5 can be found on both T cells and B cells, T cells express higher levels of CD5 than B cells. CD5 was used as a T-cell marker until monoclonal antibodies against CD3 were developed. CD5 is upregulated on T cells upon strong activation. In the thymus, there is a correlation with CD5 expression and strength of the interaction of the T cell towards self-peptides. Nevertheless, CD5 serves to mitigate activating signals from the BCR so that the B-1 cells can only be activated by very strong stimuli (such as bacterial proteins) and not by normal tissue proteins.

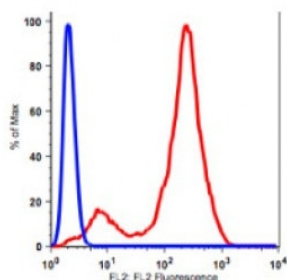
Overview

Product Name	Anti-human CD5 Monoclonal Antibody Biotin Conjugated, Flow Validated
Reactive Species	Human
Description	Boster Bio Anti-human CD5 Monoclonal Antibody Biotin Conjugated, Flow Validated (Catalog# FC00480-Biotin). Tested in Flow Cytometry application(s). This antibody reacts with Human.
Conjugate	Biotin
Application	Flow Cytometry
Clonality	Monoclonal Clone: OKT1
Formulation	PBS pH 7.2, 0.09% sodium azide
Storage Instructions	Store at 2-8°C. Avoid repeated freeze-thaw cycles.
Host	Mouse
Uniprot ID	P06127

Technical Details

Immunogen	Human peripheral blood lymphocytes
Isotype	IgG1,k
Form	Liquid
Concentration	0.5-1mg/ml, actual concentration vary by lot. Use suggested dilution ratio to decide dilution procedure.
Purification	Protein A purified
Suggested Dilutions	<p>Dilute the sample so that the expected range of concentrations fall within the detection range of this kit.</p> <p>If the expected range of concentration is unknown, a pilot test should be conducted to decide the optimal dilution ratio for your samples.</p> <p>Some PubMed article(s) citing the expression level of this target are as follows:</p> <p>Boster Bio's internal QC testing used:</p> <p>User needs to optimize the dilution ratio for this antibody.</p>

Anti-human CD5 Monoclonal Antibody Biotin Conjugated, Flow Validated (FC00480-Biotin) Images



Lymphocyte gated PBMCs stained with biotin conjugated anti-human clone OKT-1 (CD5) followed by SA-PE (red histogram). PBMC lymphocytes stained with only SA-PE (Blue histogram).

Submit a product review to Biocompare.com

Submit a review of this product to Biocompare.com to receive a \$20 Amazon.com giftcard! Your reviews help your fellow scientists make the right decisions. Thank you for your contribution.



Anti-human CD5 Monoclonal Antibody Biotin Conjugated, Flow Validated