

Anti-human HLA-DR HLA-DRA Monoclonal Antibody APC Conjugated, Flow Validated

Catalog Number: FC00568-APC

Introduction

The L243 antibody reacts with human HLA-DR antigen which is expressed on B lymphocytes, monocytes, macrophages, activated T lymphocytes, activated natural killer (NK) lymphocytes, and human progenitor cells. HLA-DR is also present on thymic epithelium, B lymphocyte dependent areas of spleen and lymph node, and B cell lymphomas.

This antibody is routinely tested by flow cytometric analysis. Flow cytometry and other applications were tested during antibody development by CapricoBio or are reported in the literature.

Application Information

Each lot of this antibody has been pre-titrated and tested by flow cytometric analysis of human PBMCs such that 5 μ l of this product is sufficient for staining of 1 million cells in a 100 μ l staining volume or 100 μ l of whole blood. It is recommended that antibody reactivity be empirically titrated for optimal performance in the application of interest.

About HLA-DRA

HLA-DR is a heterodimeric cell surface glycoprotein comprised of a 36 kD α (heavy) chain and a 27 kD β (light) chain. It is expressed on B cells, activated T cells, monocytes/macrophages, dendritic cells, and other non-professional APCs. In conjunction with the CD3/TCR complex and CD4 molecules, HLA-DR is critical for efficient peptide presentation to CD4+ T cells.

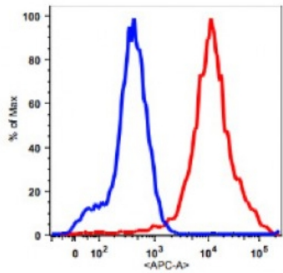
Overview

Product Name	Anti-human HLA-DR HLA-DRA Monoclonal Antibody APC Conjugated, Flow Validated
Reactive Species	Human
Description	Boster Bio Anti-human HLA-DR HLA-DRA Monoclonal Antibody APC Conjugated, Flow Validated catalog # FC00568-APC. Tested in Flow Cytometry applications. This antibody reacts with Human.
Conjugate	APC
Application	Flow Cytometry
Clonality	Monoclonal L243
Formulation	PBS, pH7.2, 0.09% NaN ₃ and 0.2% (w/v) BSA
Storage Instructions	2-8°C. Do not freeze.
Host	Mouse
Uniprot ID	P01903

Technical Details

Immunogen	Human B lymphocytes
Isotype	IgG2a,k
Form	Liquid
Concentration	0.5-1mg/ml, actual concentration vary by lot. Use suggested dilution ratio to decide dilution procedure.
Purification	Protein A purified
Suggested Dilutions	<p>Dilute the sample so that the expected range of concentrations fall within the detection range of this kit.</p> <p>If the expected range of concentration is unknown, a pilot test should be conducted to decide the optimal dilution ratio for your samples.</p> <p>Some PubMed article(s) citing the expression level of this target are as follows: Boster Bio's internal QC testing used User need to optimize the dilution ratio for this antibody</p> <p>For protocols, please visit https://www.bosterbio.com/protocol-and-troubleshooting/</p>

Anti-human HLA-DR HLA-DRA Monoclonal Antibody APC Conjugated, Flow Validated (FC00568-APC) Images



Monocytes gated PBMCs stained with APC conjugated anti-human HLA-DR (clone L243, red histogram). PBMCs monocytes stained with IgG2a APC isotype control (blue histogram).

Submit a product review to Biocompare.com

Submit a review of this product to Biocompare.com to receive a \$20 Amazon.com giftcard! Your reviews help your fellow scientists make the right decisions. Thank you for your contribution.



Anti-human HLA-DR HLA-DRA Monoclonal Antibody APC Conjugated, Flow Validated