

## Mouse anti-human CD7 Monoclonal Antibody APC Conjugated, Flow Validated

Catalog Number: FC01974-1-APC

### Introduction

The antibody recognizes CD7, a human T and NK lymphocyte antigen of 40 kDa. The CD7 antigen is expressed throughout T lymphocyte differentiation, and is present on 85% to 90% of peripheral blood T lymphocytes. In normal individuals, the CD7 antibody reacts with all CD8+ lymphocytes, approximately 90% of CD4+ lymphocytes, and most NK lymphocytes. CD7 is weakly reactive with monocytes and does not react with granulocytes or B lymphocytes. It is expressed on 50% of thymocytes in suspension. In leukemias, the CD7 antigen is present on the majority of T lymphoid lineages.

This antibody is routinely tested by flow cytometric analysis. Flow cytometry and other applications were tested during antibody development by CapricoBio or are reported in the literature.

### Application Information

Each lot of this antibody has been pre-titrated and tested by flow cytometric analysis of human PBMCs such that 5ul of this product is sufficient for staining of 1 million cells in a 100ul staining volume or 100ul of whole blood. It is recommended that antibody reactivity be empirically titrated for optimal performance in the application of interest.

### About CD7

CD7 (Cluster of Differentiation 7) is a protein that in humans is encoded by the CD7 gene. This gene encodes a transmembrane protein which is a member of the immunoglobulin superfamily. This protein is found on thymocytes and mature T cells. It plays an essential role in T-cell interactions and also in T-cell/B-cell interaction during early lymphoid development.

### Overview

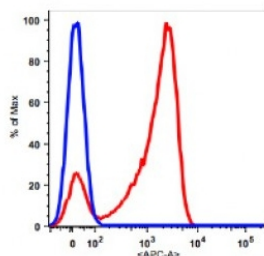
Product Name	Mouse anti-human CD7 Monoclonal Antibody APC Conjugated, Flow Validated
Reactive Species	Human
Description	Boster Bio Mouse anti-human CD7 Monoclonal Antibody APC Conjugated, Flow Validated (Catalog# FC01974-1-APC). Tested in Flow Cytometry application(s). This antibody reacts with Human.
Conjugate	APC
Application	Flow Cytometry
Clonality	Monoclonal Clone: 124-1D1
Formulation	PBS pH 7.2, 0.2% (w/v) BSA, 0.09% (w/v) sodium azide
Storage Instructions	Store at 2-8°C. Avoid repeated freeze-thaw cycles.

Host	Mouse
Uniprot ID	P09564

## Technical Details

Immunogen	Human Leukocytes
Predicted Reactive Species	Bovine, Canine
Isotype	IgG1,k
Form	Liquid
Concentration	0.5-1mg/ml, actual concentration vary by lot. Use suggested dilution ratio to decide dilution procedure.
Purification	Affinity column chromatography
Suggested Dilutions	<p>Dilute the sample so that the expected range of concentrations fall within the detection range of this kit.</p> <p>If the expected range of concentration is unknown, a pilot test should be conducted to decide the optimal dilution ratio for your samples.</p> <p>Some PubMed article(s) citing the expression level of this target are as follows:</p> <p>Boster Bio's internal QC testing used:</p> <p>User needs to optimize the dilution ratio for this antibody.</p>

## Mouse anti-human CD7 Monoclonal Antibody APC Conjugated, Flow Validated (FC01974-1-APC) Images



Lymphocytes gated PBMCs stained with APC conjugated anti-human CD7 (clone 4H9, red histogram). PBMCs lymphocytes stained with IgG2a APC isotype control (blue histogram).

## 1 Publications Citing This Product

1. PubMed ID: 31933914, Human papillomavirus genotypes and p16 expression in oral leukoplakia and squamous cell carcinoma Li-Qun Yang,1,2,3,4,\* Xuan Xiao,5,\* Chen-Xi Li,1,2 Wen-Yan Wu,1,2 Xue-Min Shen,1,2 Zeng-Tong Zhou,1,2 Yuan Fan,3,4 Lin-Jun Shi1,2 Int J Clin Exp Pathol.

Visit [bosterbio.com/anti-human-cd7-apc-conjugated-flow-validated-fc01974-1-apc-boster.html](http://bosterbio.com/anti-human-cd7-apc-conjugated-flow-validated-fc01974-1-apc-boster.html) to see all 1 publications.

## Submit a product review to Biocompare.com

Submit a review of this product to Biocompare.com to receive a \$20 Amazon.com giftcard! Your reviews help your fellow scientists make the right decisions. Thank you for your contribution.



Mouse anti-human CD7 Monoclonal Antibody APC Conjugated, Flow Validated