

Anti-human CD235a GYPA Monoclonal Antibody, GYPA Monoclonal Antibody Unconjugated, Flow Validated

Catalog Number: FC02184

Introduction

CD235a recognises a 39 kd sialoglycoprotein identified as glycophorin A. It is abundantly expressed on red blood cells and erythroid precursor cells. It has been shown that glycophorin acts on the erythrocyte binding antigen (EBA-175) of *P. falciparum* as well as the receptor for Sandei virus, parvovirus, influenza virus and hepatitis A virus. Two types of glycoproteins are identified and classified as glycophorin A (GPA) and glycophorin B (GPB). Both are trans-membrane sialoglycoproteins. GPA is the carrier of M and N antigens specific blood group whereas GPB is for the S and U specificities.

This antibody is routinely tested by flow cytometric analysis. Flow cytometry and other applications were tested during antibody development by CapricoBio or are reported in the literature.

Application Information

Each lot of this antibody has been quality control tested by flow cytometric analysis of human PBMCs. For flow cytometric staining, the recommended use of this antibody is 0.5ug per million cells in 100ul of staining volume or 0.1ml whole blood followed by a secondary fluorescent conjugated anti-mouse antibody. However, it is strongly suggested that the antibody reactivity be empirically titrated for optimal performance in the application of interest.

About GYPA

Glycophorin A (MNS blood group), also known as GYPA, is a protein which in humans is encoded by the GYPA gene. GYPA has also recently been designated CD235a (cluster of differentiation 235a). Glycophorins A (GYPA; this protein) and B (GYPB) are major sialoglycoproteins of the human erythrocyte membrane which bear the antigenic determinants for the MN and Ss blood groups. In addition to the M or N and S or s antigens, that commonly occur in all populations, about 40 related variant phenotypes have been identified. These variants include all the variants of the Miltenberger complex and several isoforms of Sta; also, Dantu, Sat, He, Mg, and deletion variants Ena, S-s-U- and Mk. Most of the variants are the result of gene recombinations between GYPA and GYPB.

Overview

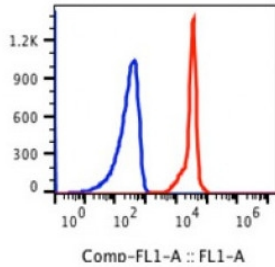
Product Name	Anti-human CD235a GYPA Monoclonal Antibody, GYPA Monoclonal Antibody Unconjugated, Flow Validated
Reactive Species	Human
Description	Boster Bio Anti-human CD235a GYPA Monoclonal Antibody, GYPA Monoclonal Antibody Unconjugated, Flow Validated (Catalog# FC02184). Tested in Flow Cytometry application(s). This antibody reacts with Human.
Application	Flow Cytometry
Clonality	Monoclonal Clone: GYPA280

Formulation	PBS pH 7.2, 0.1% (w/v) BSA, 0.09% (w/v) sodium azide
Storage Instructions	Store at 2-8°C. Avoid repeated freeze-thaw cycles.
Host	Mouse
Uniprot ID	P02724

Technical Details

Immunogen	Recombinant human glycophorin A protein
Predicted Reactive Species	Bovine, Chicken, Xenopus Laevis, Xenopus Tropicalis, Zebrafish
Isotype	IgG1,k
Form	Liquid
Concentration	0.5-1mg/ml, actual concentration vary by lot. Use suggested dilution ratio to decide dilution procedure.
Purification	Protein A purified
Suggested Dilutions	User needs to optimize the dilution ratio for this antibody.

Anti-human CD235a GYPA Monoclonal Antibody, GYPA Monoclonal Antibody Unconjugated, Flow Validated (FC02184) Images



RBCs gated human blood stained with purified anti-human CD235a (clone GYPA280) followed by staining with goat anti-mouse IgG(H+L) Alexa Fluor 488 (red histogram). Blue histogram is for the RBCs gated stained whole blood with purified IgG1 (MOPC31) isotype control followed by staining with goat anti-mouse IgG(H+L) Alexa Fluor 488.

Submit a product review to Biocompare.com

Submit a review of this product to Biocompare.com to receive a \$20 Amazon.com giftcard! Your reviews help your fellow scientists make the right decisions. Thank you for your contribution.



Anti-human CD235a GYPA Monoclonal Antibody, GYPA Monoclonal Antibody Unconjugated, Flow Validated