

Anti-Human CD3 CD3E Monoclonal Antibody PE-Cy7 Conjugated, Flow Validated

Catalog Number: FC02675-PE-Cy7

Introduction

CD10 also known as common acute lymphoblastic leukemia antigen (CALLA), is a 100 kD protein having neutral metalloendopeptidase activity and inactivates a variety of biologically active peptides. CD10 is a type II cell surface glycoprotein generally expresses mostly on acute lymphoblastic leukemias (ALL). In normal healthy volunteers precursors of B and T cells and granulocytes also express CD10. CD10 plays important role in the development process of B cell in germinal centers.

This antibody is routinely tested by flow cytometric analysis. Flow cytometry and other applications were tested during antibody development by CapricoBio or are reported in the literature.

Application Information

Each lot of this antibody has been quality control tested by flow cytometric analysis using Reh cell line. For flow cytometric staining, 5ul of this antibody is enough to stain <1x10⁶ PBMCs or 100ul whole blood sample. It is strongly suggested that the antibody reactivity be empirically titrated for optimal performance in the application of interest.

About CD3E

CD10, also known as membrane metallo-endopeptidase, neutral endopeptidase (NEP), Neprilysin, or common acute lymphoblastic leukemia antigen (CALLA), is a zinc-dependent metalloprotease enzyme that degrades a number of small secreted peptides, most notably the amyloid beta peptide whose abnormal misfolding and aggregation in neural tissue has been implicated as a cause of Alzheimer's disease. This gene is localized to human chromosome 3 by study of somatic cell hybrids and regionalized the location to 3q21-q27 by in situ hybridization. By cDNA transfection analysis, CD10 is confirmed as a functional neutral endopeptidase of the type that has previously been called enkephalinase. CD10 has also been called atriopепtidase. Atriopепtidase specifically degrades atrial natriuretic factor. A specific enzyme inhibitor was developed and reported that it had effects similar to those of low-dose ANF infusion. These effects include diuresis, natriuresis, vasodilatation, and suppression of the renin-angiotensin-aldosterone system.

Overview

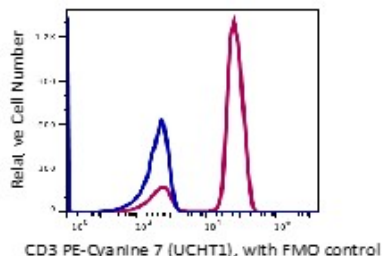
Product Name	Anti-Human CD3 CD3E Monoclonal Antibody PE-Cy7 Conjugated, Flow Validated
Reactive Species	Human
Description	Boster Bio Anti-Human CD3 CD3E Monoclonal Antibody PE-Cy7 Conjugated, Flow Validated (Catalog# FC02675-PE-Cy7). Tested in Flow Cytometry application(s). This antibody reacts with Human.
Conjugate	PE-Cy7
Application	Flow Cytometry
Clonality	Monoclonal Clone: UCHT1

Formulation	PBS pH 7.2, 0.2% (w/v) BSA, 0.09% (w/v) sodium azide
Storage Instructions	Store at 2-8°C. Avoid repeated freeze-thaw cycles.
Host	Mouse
Uniprot ID	P07766

Technical Details

Immunogen	Human peripheral blood lymphocytes
Predicted Reactive Species	Bovine, Canine
Isotype	IgG1,k
Form	Liquid, in PBS, pH7.2, <0.09% NaN ₃ and 0.2% (w/v) BSA
Concentration	0.5-1mg/ml, actual concentration vary by lot. Use suggested dilution ratio to decide dilution procedure.
Purification	Affinity column chromatography
Suggested Dilutions	<p>Dilute the sample so that the expected range of concentrations fall within the detection range of this kit.</p> <p>If the expected range of concentration is unknown, a pilot test should be conducted to decide the optimal dilution ratio for your samples.</p> <p>Some PubMed article(s) citing the expression level of this target are as follows:</p> <p>Boster Bio's internal QC testing used:</p> <p>User needs to optimize the dilution ratio for this antibody.</p>

Anti-Human CD3 CD3E Monoclonal Antibody PE-Cy7 Conjugated, Flow Validated (FC02675-PE-Cy7) Images



PBMCs lymphocytes stained with PE-Cyanine7 conjugated anti-human CD3 (clone UCHT1) (red histogram). Lymphocytes gated PBMCs of FL-3 FMO control is shown as blue histogram. The flow data are generated in BD Accuri C6 flowcytometer and analyzed in FlowJo software.

1 Publications Citing This Product

1. PubMed ID: 20470401, Li Y, Geng S, Yin Q, Chen S, Yang L, Wu X, Li B, Du X, Schmidt Ca, Przybylski Gk. J Transl Med. 2010 May 14;8:47. Doi: 10.1186/1479-5876-8-47. Decreased Level Of Recent Thymic Emigrants In Cd4+ And Cd8+T Cells From Cml Patients.

Visit bosterbio.com/anti-human-cd3-monoclonal-antibody-pe-cy7-conjugated-flow-validated-fc02675-pe-cy7-boster.html to see all 1 publications.

Submit a product review to Biocompare.com

Submit a review of this product to Biocompare.com to receive a \$20 Amazon.com giftcard! Your reviews help your fellow scientists make the right decisions. Thank you for your contribution.



Anti-Human CD3 CD3E Monoclonal Antibody PE-Cy7 Conjugated, Flow Validated