

# Anti-human CD15 FUT4 Monoclonal Antibody FITC Conjugated, Flow Validated

Catalog Number: FC04535-FITC

## Introduction

The clone FUT4815 recognizes CD15, a cell surface protein (~220kDa) abundantly expressed by granulocytes and monocytes. CD15 plays important role in mediating phagocytosis, bactericidal activity, and also chemotaxis. CD15 is also expressed by Reed-Sternberg cells and some other epithelial cells. CD15 antibody is very useful in the identification of Hodgkin's disease and also large cell lymphomas of both B and T phenotypes.

This antibody is routinely tested by flow cytometric analysis. Flow cytometry and other applications were tested during antibody development or are reported in the literature.

## Application Information

Each lot of this antibody has been pre-titrated and tested by flow cytometric analysis of human PBMCs such that 5µl of this product is sufficient for staining of 1 million cells in a 100µl staining volume or 100µl of whole blood. It is recommended that antibody reactivity be empirically titrated for optimal performance in the application of interest.

## Overview

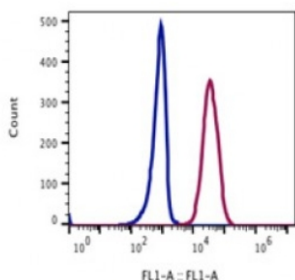
|                      |  |
|----------------------|--|
| Product Name         | Anti-human CD15 FUT4 Monoclonal Antibody FITC Conjugated, Flow Validated   |
| Reactive Species     | Human  |
| Description          | Boster Bio Anti-human CD15 FUT4 Monoclonal Antibody FITC Conjugated, Flow Validated (Catalog# FC04535-FITC). Tested in Flow Cytometry application(s). This antibody reacts with Human. |
| Conjugate            | FITC   |
| Application          | Flow Cytometry   |
| Clonality            | Monoclonal Clone: FUT4/815   |
| Formulation          | PBS pH 7.2, 0.2% (w/v) BSA, 0.09% (w/v) sodium azide   |
| Storage Instructions | Store at 2-8°C. Avoid repeated freeze-thaw cycles.   |
| Host                 | Mouse  |
| Uniprot ID           | P22083   |

## Technical Details

|           |                            |
|-----------|----------------------------|
| Immunogen | Purified human neutrophils |
|-----------|----------------------------|

|                            |   |
|----------------------------|---|
| Predicted Reactive Species | Bovine, Canine  |
| Isotype                    | IgM,k   |
| Form                       | Liquid  |
| Concentration              | 0.5-1mg/ml, actual concentration vary by lot. Use suggested dilution ratio to decide dilution procedure.  |
| Purification               | Protein A purified  |
| Suggested Dilutions        | <p>Dilute the sample so that the expected range of concentrations fall within the detection range of this kit.</p> <p>If the expected range of concentration is unknown, a pilot test should be conducted to decide the optimal dilution ratio for your samples.</p> <p>Some PubMed article(s) citing the expression level of this target are as follows:</p> <p>Boster Bio's internal QC testing used:</p> <p>Flow Cytometry, 5ul is enough to stain 1 million PBMCs or 100ul whole blood sample</p> |

## Anti-human CD15 FUT4 Monoclonal Antibody FITC Conjugated, Flow Validated (FC04535-FITC) Images



Anti-human CD15 FITC, Flow Validated

### 1 Publications Citing This Product

1. PubMed ID: 10.1262/jrd.09-126N, Isolation, Culture and Biological Characteristics of Primordial Germ Cells from Beijing Fatty Chicken

Visit [bosterbio.com/anti-human-cd15-fitc-conjugated-flow-validated-fc04535-fitc-boster.html](http://bosterbio.com/anti-human-cd15-fitc-conjugated-flow-validated-fc04535-fitc-boster.html) to see all 1 publications.

### Submit a product review to Biocompare.com

Submit a review of this product to Biocompare.com to receive a \$20 Amazon.com giftcard! Your reviews help your fellow scientists make the right decisions. Thank you for your contribution.



Anti-human CD15 FUT4 Monoclonal Antibody FITC Conjugated, Flow Validated