

# Anti-Human HLA-ABC Monoclonal Antibody PE Conjugated, Flow Validated

Catalog Number: FC20056-PE

## Introduction

Clone HNK-1 reacts with human CD57, a 110 KDa glycoprotein, which is present on a subset of NK lymphocytes and on a subset of T lymphocytes. It also reacts with myelin-associated glycoprotein in neuroectodermal tissue as well as cells of small cell lung carcinoma.

This antibody is routinely tested by flow cytometric analysis. Flow cytometry and other applications were tested during antibody development by CapricoBio or are reported in the literature.

## Application Information

Each lot of this antibody has been pre-titrated and tested by flow cytometric analysis of human PBMCs such that 5ul of this product is sufficient for staining 1 million cells in 100ul staining volume or 100ul whole blood. It is recommended that antibody reactivity be empirically titrated for optimal performance in the application of interest.

## Overview

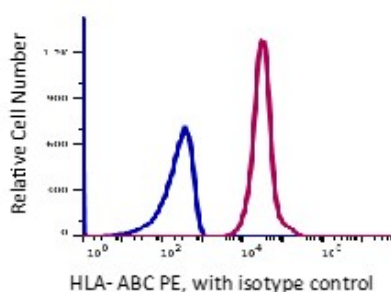
Product Name	Anti-Human HLA-ABC Monoclonal Antibody PE Conjugated, Flow Validated
Reactive Species	Cynomolgus monkey, Human, Baboon, Rhesus monkey
Description	Boster Bio Anti-Human HLA-ABC Monoclonal Antibody PE Conjugated, Flow Validated (Catalog# FC20056-PE). Tested in Flow Cytometry application(s). This antibody reacts with Human, Rhesus monkey, Cynomolgus monkey, Baboon.
Conjugate	PE
Application	Flow Cytometry
Clonality	Monoclonal Clone: W6/32
Formulation	PBS pH 7.2, 0.2% (w/v) BSA, 0.09% (w/v) sodium azide
Storage Instructions	Store at 2-8°C. Avoid repeated freeze-thaw cycles.
Host	Mouse
Uniprot ID	O19689

## Technical Details

Immunogen	Human Leukocytes
Predicted Reactive Species	Bovine, Canine

Isotype	IgG2a,k
Form	Liquid, in PBS, pH7.2, <0.09% NaN3 and 0.2% (w/v) BSA
Concentration	0.5-1mg/ml, actual concentration vary by lot. Use suggested dilution ratio to decide dilution procedure.
Purification	Affinity column chromatography
Suggested Dilutions	<p>Dilute the sample so that the expected range of concentrations fall within the detection range of this kit.</p> <p>If the expected range of concentration is unknown, a pilot test should be conducted to decide the optimal dilution ratio for your samples.</p> <p>Some PubMed article(s) citing the expression level of this target are as follows:</p> <p>Boster Bio's internal QC testing used:</p> <p>User needs to optimize the dilution ratio for this antibody.</p>

## Anti-Human HLA-ABC Monoclonal Antibody PE Conjugated, Flow Validated (FC20056-PE) Images



Lymphocytes gated PBMCs stained with PE conjugated anti-human HLA-ABC (clone W6/32) (red histogram).  
Lymphocytes gated PBMCs stained with PE conjugated mouse IgG2a isotype control (Blue histogram).

### Submit a product review to Biocompare.com

Submit a review of this product to Biocompare.com to receive a \$20 Amazon.com giftcard! Your reviews help your fellow scientists make the right decisions. Thank you for your contribution.



Anti-Human HLA-ABC Monoclonal Antibody PE Conjugated, Flow Validated