

Anti-CTNNB1 Antibody (C-term)

Catalog Number: M00004-5

About CTNNB1

Key downstream component of the canonical Wnt signaling pathway. In the absence of Wnt, forms a complex with AXIN1, AXIN2, APC, CSNK1A1 and GSK3B that promotes phosphorylation on N-terminal Ser and Thr residues and ubiquitination of CTNNB1 via BTRC and its subsequent degradation by the proteasome. In the presence of Wnt ligand, CTNNB1 is not ubiquitinated and accumulates in the nucleus, where it acts as a coactivator for transcription factors of the TCF/LEF family, leading to activate Wnt responsive genes. Involved in the regulation of cell adhesion. Acts as a negative regulator of centrosome cohesion. Involved in the CDK2/PTPN6/CTNNB1/CEACAM1 pathway of insulin internalization. Blocks anoikis of malignant kidney and intestinal epithelial cells and promotes their anchorage-independent growth by down-regulating DAPK2. Disrupts PML function and PML-NB formation by inhibiting RANBP2-mediated sumoylation of PML (PubMed:[17524503](#), PubMed:[18077326](#), PubMed:[18086858](#), PubMed:[18957423](#), PubMed:[21262353](#), PubMed:[22647378](#), PubMed:[22699938](#), PubMed:[22155184](#)). Promotes neurogenesis by maintaining sympathetic neuroblasts within the cell cycle (By similarity).

Overview

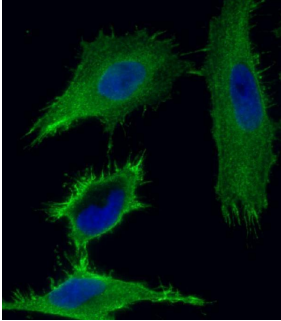
Product Name	Anti-CTNNB1 Antibody (C-term)
Reactive Species	Human, Mouse, Rat
Description	Boster Bio Anti-CTNNB1 Antibody (C-term) (Catalog # M00004-5). Tested in WB, IF application(s). This antibody reacts with Human, Mouse, Rat.
Application	IF, WB
Clonality	Monoclonal 691CT11.2.1
Formulation	Purified monoclonal antibody supplied in PBS with 0.09% (W/V) sodium azide.
Storage Instructions	Maintain refrigerated at 2-8°C for up to 2 weeks. For long-term storage, store at -20°C in small aliquots to prevent freeze-thaw cycles.
Host	Mouse
Uniprot ID	P35222

Technical Details

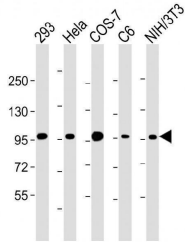
Immunogen	This CTNNB1 antibody is generated from a mouse immunized with a KLH conjugated synthetic peptide between 687-721 amino acids from the C-terminal region of human CTNNB1.
Predicted Reactive Species	Bovine, Zebrafish
Isotype	IgG1
Purification	This antibody is purified through a protein G column, followed by dialysis against PBS.
Suggested Dilutions	IF: 1:25

WB: 1:4000

Anti-CTNNB1 Antibody (C-term) (M00004-5) Images



Immunofluorescent analysis of 4% paraformaldehyde-fixed, 0.1% Triton X-100 permeabilized HeLa (human cervical epithelial adenocarcinoma cell line) cells labeling CTNNB1 with M00004-5 at 1/25 dilution, followed by Dylight® 488-conjugated goat anti-mouse IgG secondary antibody at 1/200 dilution (green). Immunofluorescence image showing membrane staining on HeLa cell line. Cytoplasmic actin is detected with Dylight® 554 Phalloidin at 1/100 dilution (red). The nuclear counter stain is DAPI (blue).



All lanes : Anti-CTNNB1 Antibody (C-term) at 1:4000 dilution
Lane 1: 293 whole cell lysate
Lane 2: HeLa whole cell lysate
Lane 3: COS-7 whole cell lysate
Lane 4: C6 whole cell lysate
Lane 5: NIH/3T3 whole cell lysate
Lysates/proteins at 20 µg per lane. Secondary Goat Anti-mouse IgG, (H+L), Peroxidase conjugated at 1/10000 dilution. Predicted band size : 98 kDa
Blocking/Dilution buffer: 5% NFDN/TBST.

Submit a product review to Biocompare.com

Submit a review of this product to Biocompare.com to receive a \$20 Amazon.com giftcard! Your reviews help your fellow scientists make the right decisions. Thank you for your contribution.



Anti-CTNNB1 Antibody (C-term)

For Research Use Only. Not for use in diagnostic procedures.