

Anti-STAT3 Mouse Monoclonal Antibody [Clone ID: OTI21E7]

Catalog Number: M00007-3

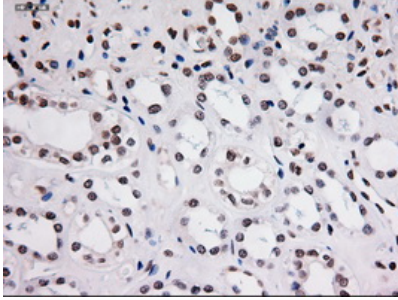
Overview

Product Name	Anti-STAT3 Mouse Monoclonal Antibody [Clone ID: OTI21E7]
Reactive Species	Human, Mouse, Rat
Description	Boster Bio Anti-STAT3 mouse monoclonal antibody, clone OTI21E7 (formerly 21E7). Catalog# M00007-3. Tested in IHC, WB. This antibody reacts with Human, Mouse, Rat.
Conjugate	Unconjugated
Application	IHC, WB
Clonality	Monoclonal OTI21E7
Formulation	PBS (pH 7.3) containing 1% stabilizing protein, 50% glycerol and 0.02% sodium azide. This antibody is supplied in a stabilized formulation. Compatibility with conjugation reactions depends on the chemistry of the conjugation method used. For conjugation methods that are not compatible with the stabilizing components present in this formulation, a carrier-free antibody format is required.
Storage Instructions	Store at -20°C for one year. For short term storage and frequent use, store at 4°C for up to one month. Avoid repeated freeze-thaw cycles.
Host	Mouse
Uniprot ID	P40763

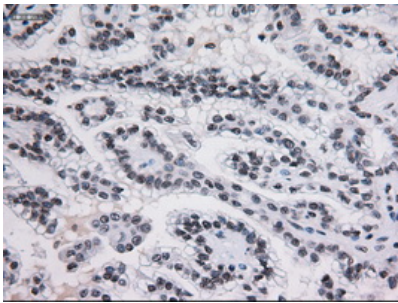
Technical Details

Immunogen	Recombinant protein expressed in E.coli corresponding to amino acids 154-175 of human stat3
Isotype	IgG1
Concentration	0.35 mg/ml
Purification	Purified from mouse ascites fluids or tissue culture supernatant by affinity chromatography (protein A/G)
Suggested Dilutions	WB: 1:500 IHC 1:50

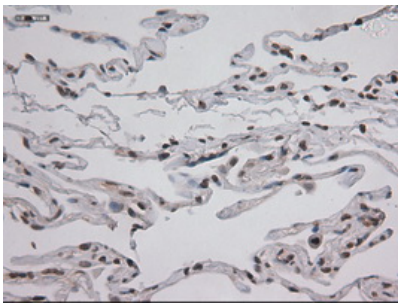
Anti-STAT3 Mouse Monoclonal Antibody [Clone ID: OTI21E7] (M00007-3) Images



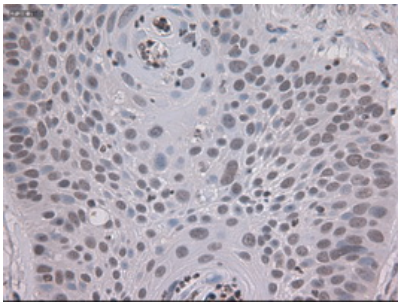
Immunohistochemical staining of paraffin-embedded kidney within the normal limits using anti-STAT3 (M00007-3) mouse monoclonal antibody (Heat-induced epitope retrieval by 10mM citric buffer)



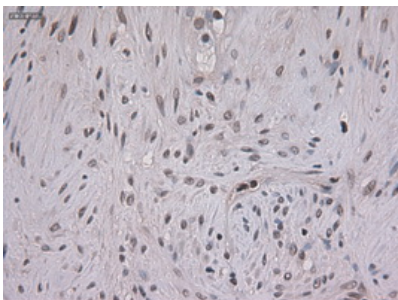
Immunohistochemical staining of paraffin-embedded Carcinoma of kidney using anti-STAT3 (M00007-3) mouse monoclonal antibody (Heat-induced epitope retrieval by 10mM citric buffer)



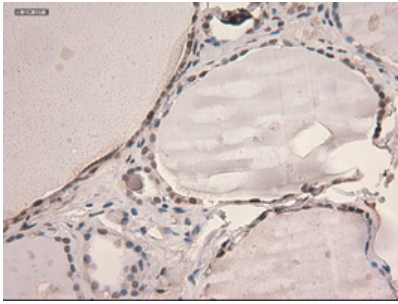
Immunohistochemical staining of paraffin-embedded lung within the normal limits using anti-STAT3 (M00007-3) mouse monoclonal antibody (Heat-induced epitope retrieval by 10mM citric buffer)



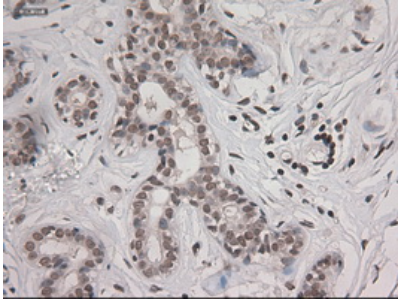
Immunohistochemical staining of paraffin-embedded Carcinoma of lung using anti-STAT3 (M00007-3) mouse monoclonal antibody (Heat-induced epitope retrieval by 10mM citric buffer)



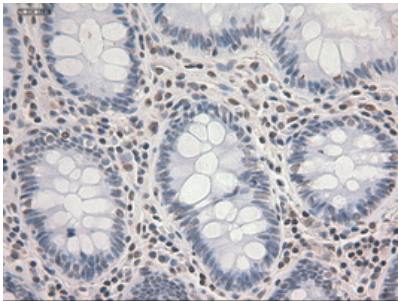
Immunohistochemical staining of paraffin-embedded Carcinoma of pancreas using anti-STAT3 (M00007-3) mouse monoclonal antibody (Heat-induced epitope retrieval by 10mM citric buffer)



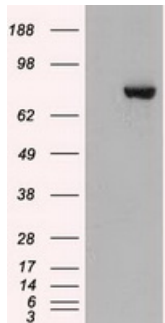
Immunohistochemical staining of paraffin-embedded thyroid within the normal limits using anti-STAT3 (M00007-3) mouse monoclonal antibody (Heat-induced epitope retrieval by 10mM citric buffer)



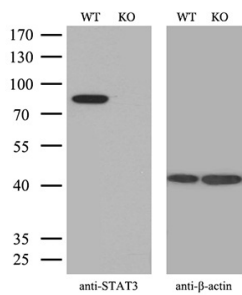
Immunohistochemical staining of paraffin-embedded breast within the normal limits using anti-STAT3 (M00007-3) mouse monoclonal antibody (Heat-induced epitope retrieval by 10mM citric buffer)



Immunohistochemical staining of paraffin-embedded colon within the normal limits using anti-STAT3 (M00007-3) mouse monoclonal antibody (Heat-induced epitope retrieval by 10mM citric buffer)

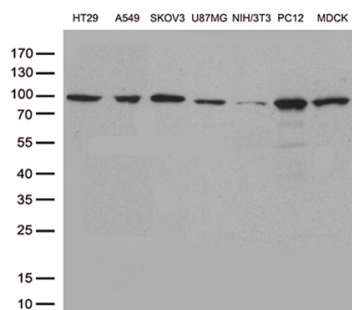


HEK293T cells were transfected with the pCMV6-ENTRY control (Left lane) or pCMV6-ENTRY STAT3 (Right lane) cDNA for 48 hrs and lysed. Equivalent amounts of cell lysates (5 ug per lane) were separated by SDS-PAGE and immunoblotted with anti-STAT3.

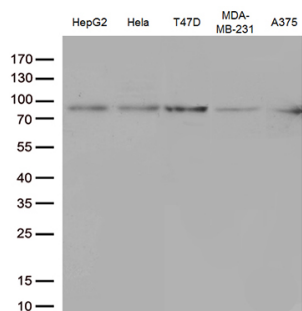


Equivalent amounts of cell lysates (10 ug per lane) of wild-type Hela cells (WT) and STAT3-Knockout Hela cells (KO) were separated by SDS-PAGE and immunoblotted with anti-STAT3 monoclonal antibody M00007-3. Then the blotted membrane was stripped and reprobbed with anti-β-actin antibody as a loading control (1:500).

Western blot analysis of extracts (35ug) from different cell



line by using anti-STAT3 monoclonal antibody (1:500).



Western blot analysis of extracts (35ug) from different cell line by using anti-STAT3 monoclonal antibody (1:500).

Submit a product review to Biocompare.com

Submit a review of this product to Biocompare.com to receive a \$20 Amazon.com giftcard! Your reviews help your fellow scientists make the right decisions. Thank you for your contribution.



Anti-STAT3 Mouse Monoclonal Antibody [Clone ID: OTI21E7]

For Research Use Only. Not for use in diagnostic procedures.