

Anti-ErbB2 (HER2) Monoclonal Antibody

Catalog Number: M00010-1

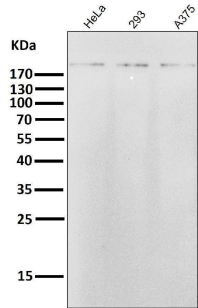
Overview

Product Name	Anti-ErbB2 (HER2) Monoclonal Antibody
Reactive Species	Human
Description	Boster Bio Anti-ErbB2 (HER2) Monoclonal Antibody catalog # M00010-1. Tested in WB, IHC, ICC/IF, IP, Flow Cytometry applications. This antibody reacts with Human.
Application	Flow Cytometry, IP, IF, IHC, ICC, WB
Clonality	Monoclonal BCI-5
Formulation	Rabbit IgG in stabilizing components, phosphate buffered saline, pH 7.4, 150mM NaCl, 0.02% sodium azide and 50% glycerol. *This antibody is supplied in a stabilized formulation. Compatibility with conjugation reactions depends on the chemistry of the conjugation method used. For conjugation methods that are not compatible with the stabilizing components present in this formulation, a carrier-free antibody format is required.
Storage Instructions	Store at -20°C for one year. For short term storage and frequent use, store at 4°C for up to one month. Avoid repeated freeze-thaw cycles.
Host	Rabbit
Uniprot ID	P04626

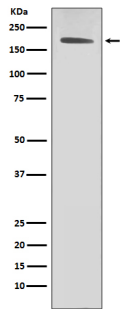
Technical Details

Immunogen	A synthesized peptide derived from human ErbB2 (HER2).
Isotype	Rabbit IgG
Form	Liquid
Concentration	0.5mg/ml
Purification	Affinity-chromatography
Suggested Dilutions	WB 1:500-2000 IHC 1:50-200 ICC/IF 1:50-200 IP 1:20 FC 1:20

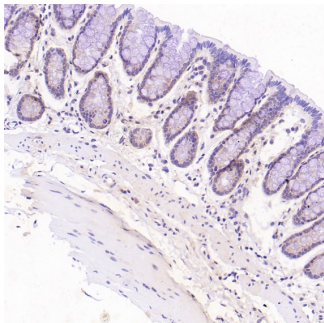
Anti-ErbB2 (HER2) Monoclonal Antibody (M00010-1) Images



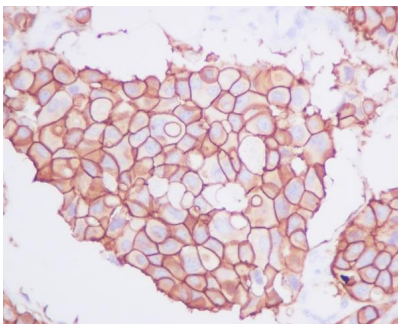
All lanes use the Antibody at 1:5K dilution for 1 hour at room temperature.



Western blot analysis of ErbB2 (HER2) expression in SKBR-3 cell lysate.

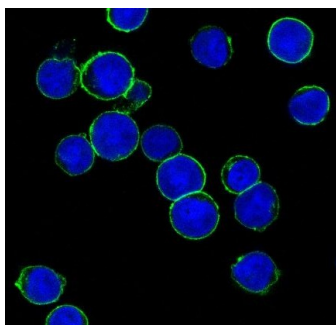
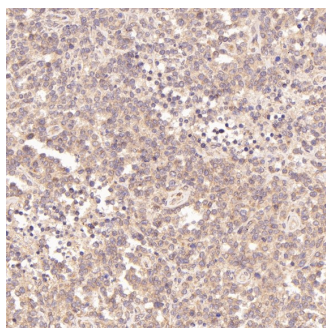


Immunohistochemical analysis of paraffin-embedded Rat stomach, using the Antibody at 1:50 dilution.



Immunohistochemical analysis of paraffin-embedded human breast carcinoma, using ErbB2 (HER2) Antibody.

Immunohistochemical analysis of paraffin-embedded Human esophageal carcinoma, using the Antibody at 1:50 dilution.



Immunofluorescent analysis of SKBR cells, using ErbB2 (HER2) Antibody.

3 Publications Citing This Product

1. PubMed ID: 28667103, Tong ZJ, Shi NY, Zhang ZJ, Yuan XD, Hong XM. Biosci Rep. 2017 Aug 2;37(4). pii: BSR20170121. doi: 10.1042/BSR20170121. Print 2017 Aug 31. Expression and prognostic value of HER-2/neu in primary breast cancer with sentinel lymph node metastasis
2. PubMed ID: 21392403, Tao L, Suhua C, Juanjuan C, Zongzhi Y, Juan X, Dandan Z. Virol J. 2011 Mar 11;8:114. Doi: 10.1186/1743-422X-8-114. In Vitro Study On Human Cytomegalovirus Affecting Early Pregnancy Villous Evt'S Invasion Function.
3. PubMed ID: 24902791, Lapatinib-incorporated lipoprotein-like nanoparticles: preparation and a proposed breast cancer-targeting mechanism

Visit bosterbio.com/anti-erbb2-her2-antibody-m00010-1-boster.html to see all 3 publications.

Submit a product review to Biocompare.com

Submit a review of this product to Biocompare.com to receive a \$20 Amazon.com giftcard! Your reviews help your fellow scientists make the right decisions. Thank you for your contribution.



Anti-ErbB2 (HER2) Monoclonal Antibody

For Research Use Only. Not for use in diagnostic procedures.