

Anti-HER2 Rabbit Monoclonal Antibody, Clone#RM228

Catalog Number: M00010-2

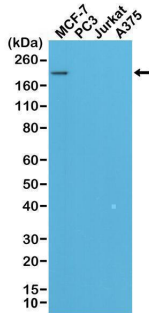
Overview

| | |
|----------------------|--|
| Product Name | Anti-HER2 Rabbit Monoclonal Antibody, Clone#RM228 |
| Reactive Species | Human |
| Description | Boster Bio Anti-HER2 Rabbit Monoclonal Antibody, Clone#RM228 (Catalog # M00010-2). Tested in IHC, WB applications. This antibody reacts with Human. |
| Application | IHC, WB |
| Clonality | Monoclonal RM228 |
| Formulation | 50% Glycerol/PBS with 1% stabilizing protein and 0.09% sodium azide This antibody is supplied in a stabilized formulation. Compatibility with conjugation reactions depends on the chemistry of the conjugation method used. For conjugation methods that are not compatible with the stabilizing components present in this formulation, a carrier-free antibody format is required. |
| Storage Instructions | Store at -20°C for one year. Avoid repeated freeze-thaw cycles. |
| Host | Rabbit |
| Uniprot ID | P04626 |

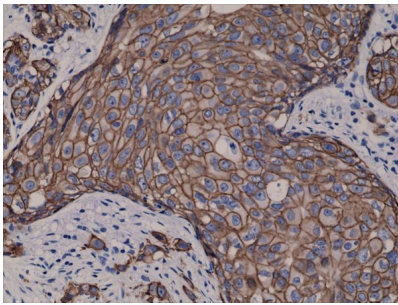
Technical Details

| | |
|---------------------|--|
| Immunogen | A peptide corresponding to the C-terminus of Human c-erbB-2/HER-2 |
| Cross Reactivity | This antibody reacts to Human c-erbB-2/HER-2. This antibody may also react to mouse or rat c-erbB-2/HER-2, as predicted by immunogen homology. |
| Isotype | Rabbit IgG |
| Form | Liquid |
| Concentration | 0.5-1mg/ml, actual concentration vary by lot. Use suggested dilution ratio to decide dilution procedure. |
| Purification | Protein A affinity purified from an animal origin-free culture supernatant |
| Suggested Dilutions | Immunohistochemistry (IHC): 1:100 dilution WB: 1:1000 dilution. |

Anti-HER2 Rabbit Monoclonal Antibody, Clone#RM228 (M00010-2) Images



Western Blotting result Western Blot of MCF-7, PC3, Jurkat, and A375 cell lysates using RM228, showed a band of Her2 expressed only in MCF-7 cells.



IHC result Immunohistochemical staining of formalin fixed and paraffin embedded human breast cancer tissue sections.

2 Publications Citing This Product

1. PubMed ID: 28667103, Tong ZJ, Shi NY, Zhang ZJ, Yuan XD, Hong XM. Biosci Rep. 2017 Aug 2;37(4). pii: BSR20170121. doi: 10.1042/BSR20170121. Print 2017 Aug 31. Expression and prognostic value of HER-2/neu in primary breast cancer with sentinel lymph node metastasis
2. PubMed ID: 24902791, Lapatinib-incorporated lipoprotein-like nanoparticles: preparation and a proposed breast cancer-targeting mechanism

Visit bosterbio.com/anti-her2-rabbit-monoclonal-antibody-clone-rm228-m00010-2-boster.html to see all 2 publications.

Submit a product review to Biocompare.com

Submit a review of this product to Biocompare.com to receive a \$20 Amazon.com giftcard! Your reviews help your fellow scientists make the right decisions. Thank you for your contribution.



Anti-HER2 Rabbit Monoclonal Antibody, Clone#RM228

For Research Use Only. Not for use in diagnostic procedures.