

Anti-Her2 (ERBB2) Mouse Monoclonal Antibody [Clone ID: OTI3F11]

Catalog Number: M00010-4

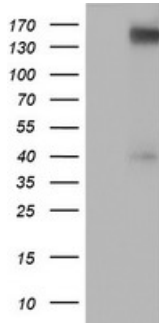
Overview

Product Name	Anti-Her2 (ERBB2) Mouse Monoclonal Antibody [Clone ID: OTI3F11]
Reactive Species	Human, Mouse, Rat
Description	Boster Bio ERBB2 mouse monoclonal antibody, clone OTI3F11 (formerly 3F11). Catalog# M00010-4. Tested in FC, IF, IHC, WB. This antibody reacts with Human, Mouse, Rat.
Application	Flow Cytometry, IF, IHC, WB
Clonality	Monoclonal OTI3F11
Formulation	PBS (pH 7.3) containing 1% stabilizing protein, 50% glycerol and 0.02% sodium azide. This antibody is supplied in a stabilized formulation. Compatibility with conjugation reactions depends on the chemistry of the conjugation method used. For conjugation methods that are not compatible with the stabilizing components present in this formulation, a carrier-free antibody format is required.
Storage Instructions	Store at -20°C as received.
Host	Mouse
Uniprot ID	P04626

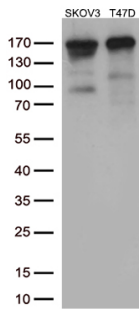
Technical Details

Immunogen	Human recombinant protein fragment corresponding to amino acids 676-1255 of human ERBB2 (NP_004439) produced in HEK293T cell.
Isotype	IgG2b
Concentration	0.88 mg/ml
Purification	Purified from mouse ascites fluids or tissue culture supernatant by affinity chromatography (protein A/G)
Suggested Dilutions	WB 1:2000 IHC 1:150 IF 1:100 Flow Cytometry 1:100

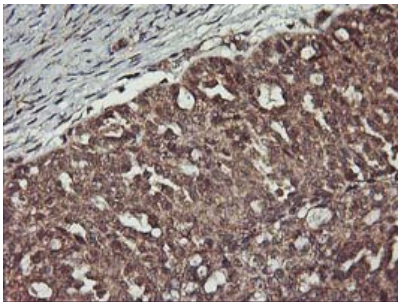
Anti-Her2 (ERBB2) Mouse Monoclonal Antibody [Clone ID: OTI3F11] (M00010-4) Images



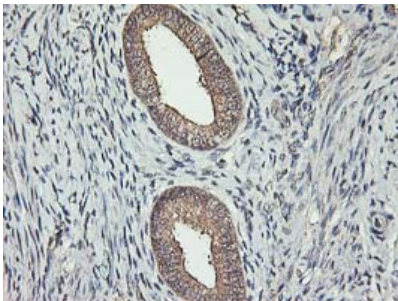
HEK293T cells were transfected with the pCMV6-ENTRY control (Left lane) or pCMV6-ENTRY ERBB2 (Right lane) cDNA for 48 hrs and lysed. Equivalent amounts of cell lysates (5 ug per lane) were separated by SDS-PAGE and immunoblotted with anti-ERBB2.



Western blot analysis of extracts (35ug) from 2 different cell lines by using anti-ERBB2 monoclonal antibody (1:500).

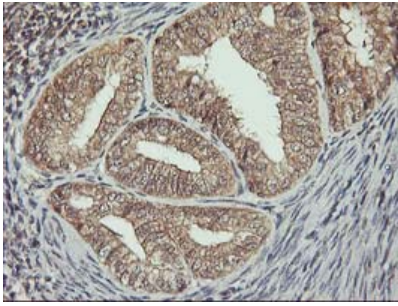


Immunohistochemical staining of paraffin-embedded Adenocarcinoma of Human ovary tissue using anti-ERBB2 mouse monoclonal antibody. (Heat-induced epitope retrieval by 10mM citric buffer)

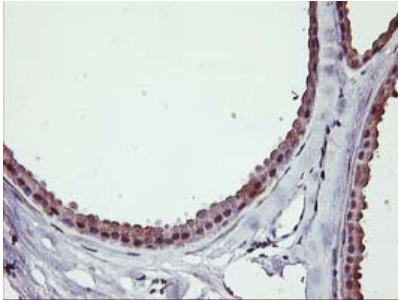


Immunohistochemical staining of paraffin-embedded Human endometrium tissue within the normal limits using anti-ERBB2 mouse monoclonal antibody. (Heat-induced epitope retrieval by 10mM citric buffer)

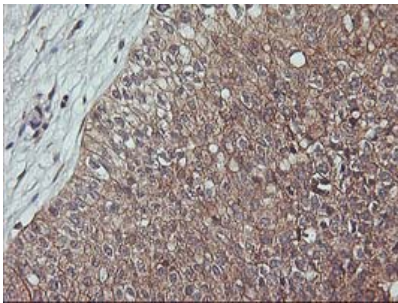
Immunohistochemical staining of paraffin-embedded Adenocarcinoma of Human endometrium tissue using anti-ERBB2 mouse monoclonal antibody. (Heat-induced epitope retrieval by 10mM citric buffer)



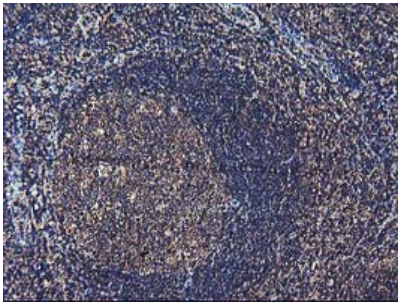
Immunohistochemical staining of paraffin-embedded Human breast tissue within the normal limits using anti-ERBB2 mouse monoclonal antibody. (Heat-induced epitope retrieval by 10mM citric buffer)



Immunohistochemical staining of paraffin-embedded Carcinoma of Human bladder tissue using anti-ERBB2 mouse monoclonal antibody. (Heat-induced epitope retrieval by 10mM citric buffer)

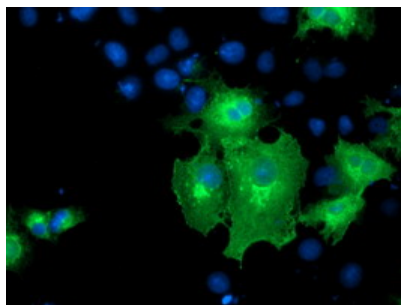
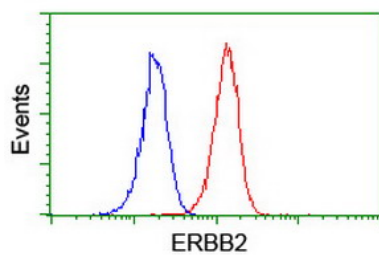


Immunohistochemical staining of paraffin-embedded Human tonsil within the normal limits using anti-ERBB2 mouse monoclonal antibody. (Heat-induced epitope retrieval by 10mM citric buffer)



HEK293T cells transfected with either ERBB2 (Myc-DDK-tagged) overexpress plasmid (Red) or empty vector control plasmid (Blue) were immunostained by anti-ERBB2 antibody (M00010-4)

Flow cytometric Analysis of Jurkat cells



Anti-ERBB2 mouse monoclonal antibody (M00010-4) immunofluorescent staining of COS7 cells transiently transfected by pCMV6-ENTRY ERBB2.

Submit a product review to Biocompare.com

Submit a review of this product to Biocompare.com to receive a \$20 Amazon.com giftcard! Your reviews help your fellow scientists make the right decisions. Thank you for your contribution.



Anti-Her2 (ERBB2) Mouse Monoclonal Antibody [Clone ID: OT13F11]

For Research Use Only. Not for use in diagnostic procedures.