

Anti-HIF-1 alpha Rabbit Monoclonal Antibody

Catalog Number: M00013-3

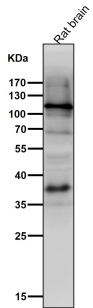
Overview

| | |
|----------------------|--|
| Product Name | Anti-HIF-1 alpha Rabbit Monoclonal Antibody |
| Reactive Species | Human |
| Description | Boster Bio Anti-HIF-1 alpha Rabbit Monoclonal Antibody catalog # M00013-3. Tested in WB, IHC, ICC/IF, IP, Flow Cytometry applications. This antibody reacts with Human. |
| Application | Flow Cytometry, IP, IF, IHC, ICC, WB |
| Clonality | Monoclonal 17H18 |
| Formulation | Rabbit IgG in stabilizing components, phosphate buffered saline, pH 7.4, 150mM NaCl, 0.02% sodium azide and 50% glycerol. *This antibody is supplied in a stabilized formulation. Compatibility with conjugation reactions depends on the chemistry of the conjugation method used. For conjugation methods that are not compatible with the stabilizing components present in this formulation, a carrier-free antibody format is required. |
| Storage Instructions | Store at -20°C for one year. For short term storage and frequent use, store at 4°C for up to one month. Avoid repeated freeze-thaw cycles. |
| Host | Rabbit |
| Uniprot ID | Q16665 |

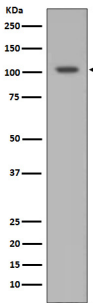
Technical Details

| | |
|---------------------|--|
| Immunogen | A synthesized peptide derived from human HIF-1 alpha |
| Isotype | IgG |
| Form | Liquid |
| Concentration | 0.5mg/ml |
| Purification | Affinity-chromatography |
| Suggested Dilutions | WB 1:500-2000 IHC 1:50-200 ICC/IF 1:50-200 IP 1:30 FC 1:30 |

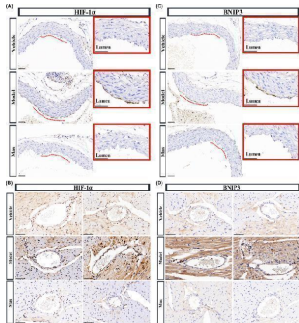
Anti-HIF-1 alpha Rabbit Monoclonal Antibody (M00013-3) Images



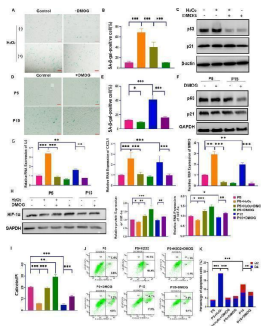
All lanes use the Antibody at 1:1000 dilution for 1 hour at room temperature.



Western blot analysis of HIF-1 alpha expression in Ramos cell lysate.

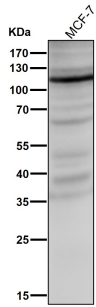


Activation of HIF-1alpha/BNIP3 signaling pathway in artery of KD murine model. A Representative immunohistochemical images for HIF-1alpha expression in aorta (n = 4 per group). Enlarged images of area of interesting (AOI) were indicated with red block diagrams. Scale bar: 50 um. B Representative immunohistochemical images for HIF-1alpha expression in coronary bifurcation arteritis (n = 4 per group). Scale bar: 50 um. C Representative immunohistochemical images for BNIP3 expression in aorta (n = 4 per group). Enlarged images of area of interesting (AOI) were indicated with red block diagrams. Scale bar: 50 um. D Representative immunohistochemical images for BNIP3 expression in coronary bifurcation arteritis (n = 4 per group). Scale bar: 50 um. Index in PubMed under a CC BY license. PMID: 37980402

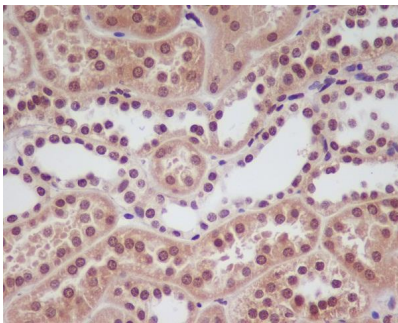


Short-term DMOG treatment reduces MSC senescence by activating HIF-1alpha and decreasing apoptosis. (A , B) Representative images of SA-beta-gal staining showing the proportion of senescent cells in H₂O₂-treated MSCs before and after DMOG treatment. Scale bar = 500 um. (C) Western blot analysis of p53 and p21 protein expression during oxidative stress-induced senescence. (D , E) SA-beta-gal staining in replicative senescence (P15) MSCs, demonstrating the effect of DMOG in reducing senescence markers. Scale bar = 500 um. (F) Western blot analysis of p53 and p21 protein levels in P5 (young) and P15 (senescent) MSCs. (G) Expression levels of senescence-associated genes (IL6, CXCL1, and MMP3) in both senescence models as assessed by qRT-PCR. (H) Western

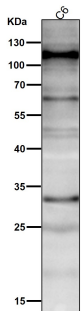
blotting and qPCR analysis showing increased HIF-1alpha protein and mRNA levels in both senescence models after DMOG treatment. (I) Calcein/PI live-dead staining revealed an increase in the proportion of live cells following DMOG treatment in both senescence models. (J , K) Flow cytometric analysis of apoptosis. Error bars represent the mean \pm SD of three independent experiments. Statistical significance was set as p



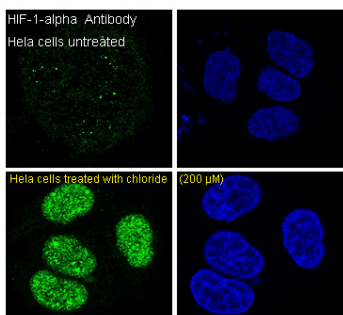
All lanes use the Antibody at 1:1000 dilution for 1 hour at room temperature.



Immunohistochemical analysis of paraffin-embedded human kidney, using HIF-1 alpha Antibody.

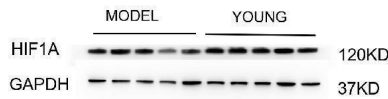


All lanes use the Antibody at 1:1000 dilution for 1 hour at room temperature.



Immunofluorescent analysis of HeLa cells, using HIF-1 alpha Antibody.

Western blot analysis of HIF-1 alpha using anti-HIF-1 alpha antibody (M00013-3). Electrophoresis was performed on a



5-20% SDS-PAGE gel at 80V (Stacking gel) / 120V (Resolving gel) for 2 hours. The sample well of each lane was loaded with 30 ug of sample under reducing conditions. Lane 1-5: model group-human uterine tissue lysates, Lane 6-10: young group-human uterine tissue- lysates. After electrophoresis, proteins were transferred to a nitrocellulose membrane at 150 mA for 50-90 minutes. Blocked the membrane with 5% non-fat milk/TBS for 1.5 hour at RT. The membrane was incubated with rabbit anti-HIF-1 alpha antigen affinity purified monoclonal antibody (A04887-1) at 1:1000 overnight at 4°C, then washed with TBS-0.1%Tween 3 times with 5 minutes each and probed with a goat anti-rabbit IgG-HRP secondary antibody at for 1 hour at RT. The signal is developed using an ECL Plus Western Blotting Substrate (Catalog # AR1196-200) with Tanon 5200 system. A specific band was detected for HIF-1 alpha at approximately 120 kDa. The expected band size for HIF-1 alpha is at 120 kDa.

Submit a product review to Biocompare.com

Submit a review of this product to Biocompare.com to receive a \$20 Amazon.com giftcard! Your reviews help your fellow scientists make the right decisions. Thank you for your contribution.



Anti-HIF-1 alpha Rabbit Monoclonal Antibody

For Research Use Only. Not for use in diagnostic procedures.