

## Anti-ATM Monoclonal Antibody

Catalog Number: M00014

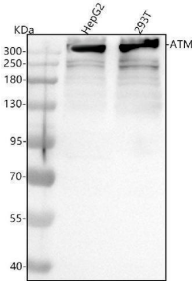
### Overview

Product Name	Anti-ATM Monoclonal Antibody
Reactive Species	Human
Description	Boster Bio Anti-ATM Monoclonal Antibody catalog # M00014. Tested in WB, IHC, ICC/IF, Flow Cytometry applications. This antibody reacts with Human.
Application	Flow Cytometry, IF, IHC, ICC, WB
Clonality	Monoclonal BCF-1
Formulation	Rabbit IgG in stabilizing components, phosphate buffered saline, pH 7.4, 150mM NaCl, 0.02% sodium azide and 50% glycerol. *This antibody is supplied in a stabilized formulation. Compatibility with conjugation reactions depends on the chemistry of the conjugation method used. For conjugation methods that are not compatible with the stabilizing components present in this formulation, a carrier-free antibody format is required.
Storage Instructions	Store at -20°C for one year. For short term storage and frequent use, store at 4°C for up to one month. Avoid repeated freeze-thaw cycles.
Host	Rabbit
Uniprot ID	Q13315

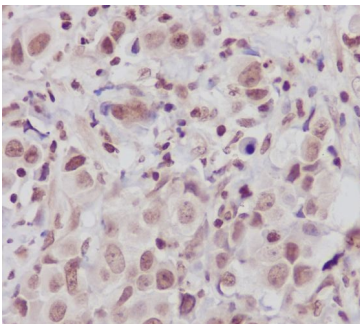
### Technical Details

Immunogen	A synthesized peptide derived from human ATM
Isotype	Rabbit IgG
Form	Liquid
Concentration	0.5mg/ml
Purification	Affinity-chromatography
Suggested Dilutions	WB 1:500-2000 IHC 1:50-200 ICC/IF 1:50-200 FC 1:50

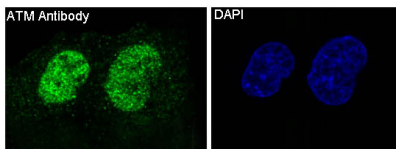
## Anti-ATM Monoclonal Antibody (M00014) Images



Western blot analysis of ATM using anti-ATM antibody (M00014). Electrophoresis was performed on a 5-20% SDS-PAGE gel at 70V (Stacking gel) / 90V (Resolving gel) for 2-3 hours. The sample well of each lane was loaded with 30 ug of sample under reducing conditions. Lane 1: human HepG2 whole cell lysates, Lane 2: human 293T whole cell lysates. After electrophoresis, proteins were transferred to a nitrocellulose membrane at 150 mA for 50-90 minutes. Blocked the membrane with 5% non-fat milk/TBS for 1.5 hour at RT. The membrane was incubated with rabbit anti-ATM antigen affinity purified monoclonal antibody (Catalog # M00014) at 1:500 overnight at 4°C, then washed with TBS-0.1%Tween 3 times with 5 minutes each and probed with a goat anti-rabbit IgG-HRP secondary antibody at a dilution of 1:5000 for 1.5 hour at RT. The signal is developed using an Enhanced Chemiluminescent detection (ECL) kit (Catalog # EK1002) with Tanon 5200 system. A specific band was detected for ATM at approximately 351 kDa. The expected band size for ATM is at 351 kDa.



Immunohistochemical analysis of paraffin-embedded human breast cancer, using ATM Antibody.



Immunofluorescent analysis of HeLa cells, using ATM Antibody.

**Submit a product review to [Biocompare.com](https://www.biocompare.com)**

Submit a review of this product to [Biocompare.com](https://www.biocompare.com) to receive a \$20 Amazon.com giftcard! Your reviews help your fellow scientists make the right decisions. Thank you for your contribution.



Anti-ATM Monoclonal Antibody

For Research Use Only. Not for use in diagnostic procedures.