

Anti-CTLA4 Monoclonal Antibody [1E6]

Catalog Number: M00020-1

About CTLA4

The cytotoxic T-lymphocyte-associated protein 4 (CTLA-4), also known as CD152, is a member of the immunoglobulin superfamily that is expressed by activated T cells and transmits an inhibitory signal to T cells (1,2). Both it and the homologous T-cell co-stimulatory protein CD28 bind to CD80 (B7-H1) and CD86 (B7-H2) on antigen-presenting cells (APCs) (3). Mutations in the CTLA-4 gene have been implicated in multiple autoimmune diseases (4). CTLA-4 also functions as an immune checkpoint protein, and anti-CTLA-4 antibodies have been successfully used in the treatment of cancer (5).

Overview

Product Name	Anti-CTLA4 Monoclonal Antibody [1E6]
Reactive Species	Human
Description	Boster Bio Anti-CTLA4 Monoclonal Antibody [1E6] (Catalog # M00020-1). Tested in ELISA, WB, IHC-P, ICC, IF applications. This antibody reacts with Human.
Application	ELISA, IF, IHC-P, ICC, WB
Clonality	Monoclonal Clone: 1E6
Formulation	CTLA-4 Antibody is supplied in PBS containing 0.02% sodium azide and 50% glycerol.
Storage Instructions	CTLA-4 antibody can be stored at 4°C for three months and -20°C, stable for up to one year. Avoid repeated freeze-thaw cycles. Antibodies should not be exposed to prolonged high temperatures.
Host	Mouse
Uniprot ID	P16410

Technical Details

Immunogen	CTLA-4 antibody was raised against the extracellular domain of human CTLA-4.
Predicted Reactive Species	Human
Cross Reactivity	At least three isoforms of KLRA1 are known to exist; this antibody recognizes only the long isoform.
Isotype	IgG1
Form	Liquid
Concentration	1 mg/mL
Purification	CTLA-4 Antibody is supplied as protein A purified IgG1.
Suggested Dilutions	Dilute the sample so that the expected range of concentrations fall within the detection range of this

kit.

If the expected range of concentration is unknown, a pilot test should be conducted to decide the optimal dilution ratio for your samples.

Some PubMed article(s) citing the expression level of this target are as follows:

Boster Bio's internal QC testing used:

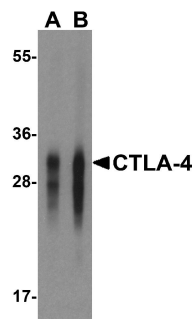
CTLA-4 antibody can be used for detection of CTLA-4 by Western blot at 0.125 - 0.25 ug/mL.

Antibody can also be used for immunohistochemistry starting at 5 ug/mL. For immunofluorescence start at 20 ug/mL.

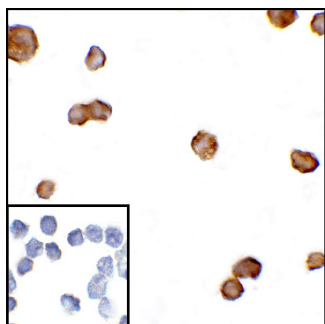
Antibody validated: Western Blot in human samples; Immunohistochemistry in human samples;

Immunocytochemistry in human samples and Immunofluorescence in human samples. All other applications and species not yet tested. Optimal dilutions for each application should be determined by the researcher.

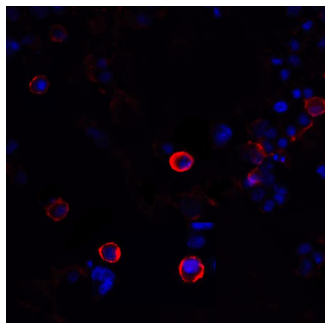
Anti-CTLA4 Monoclonal Antibody [1E6] (M00020-1) Images



Western blot analysis of CTLA-4 in overexpressing HEK293 cells CTLA-4 antibody at 0.125 and 0.25 ug/mL.

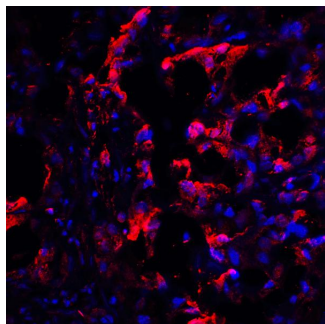


Immunocytochemistry of CTLA-4 in transfected HEK293 cells with CTLA-4 antibody at 5 ug/mL. Lower left: Immunocytochemistry in transfected HEK293 cells with control mouse IgG antibody at 5 ug/mL.



Immunofluorescence of CTLA-4 in transfected HEK293 cells with CTLA-4 antibody at 20 ug/mL.

Red: CTLA4 Antibody [1E6] (RF16011)
Blue: DAPI staining

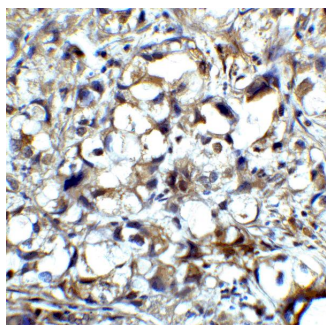
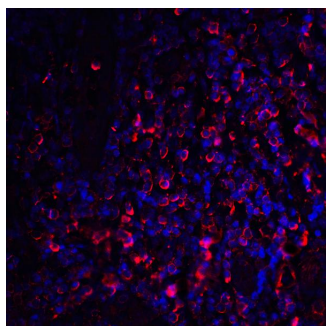


Immunofluorescence of CTLA-4 in human lymph node tissue with CTLA-4 antibody at 20 ug/mL.

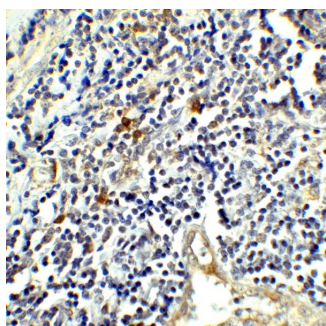
Red: CTLA4 Antibody [1E6] (RF16011)
Blue: DAPI staining

Immunofluorescence of CTLA-4 in human tonsil tissue with CTLA-4 antibody at 20 ug/mL.

Red: CTLA4 Antibody [1E6] (M00020-1)
Blue: DAPI staining



Immunohistochemistry of CTLA-4 in human lymph node tissue with CTLA-4 antibody at 5 ug/mL.



Immunohistochemistry of CTLA-4 in human tonsil tissue with CTLA-4 antibody at 5 ug/mL.

Submit a product review to Biocompare.com

Submit a review of this product to Biocompare.com to receive a \$20 Amazon.com giftcard! Your reviews help your fellow scientists make the right decisions. Thank you for your contribution.



Anti-CTLA4 Monoclonal Antibody [1E6]