

Anti-CTLA4 Mouse Monoclonal Antibody [Clone ID: OTI8F1]

Catalog Number: M00020-2

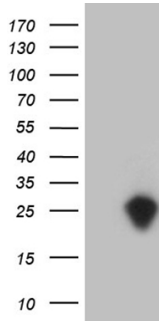
Overview

Product Name	Anti-CTLA4 Mouse Monoclonal Antibody [Clone ID: OTI8F1]
Reactive Species	Human
Description	Boster Bio CTLA4 mouse monoclonal antibody, clone OTI8F1. Catalog# M00020-2. Tested in FC, WB. This antibody reacts with Human.
Application	Flow Cytometry, WB
Clonality	Monoclonal OTI8F1
Formulation	PBS (pH 7.3) containing 1% stabilizing protein, 50% glycerol and 0.02% sodium azide. This antibody is supplied in a stabilized formulation. Compatibility with conjugation reactions depends on the chemistry of the conjugation method used. For conjugation methods that are not compatible with the stabilizing components present in this formulation, a carrier-free antibody format is required.
Storage Instructions	Store at -20°C as received.
Host	Mouse
Uniprot ID	P16410

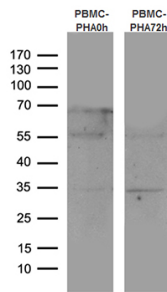
Technical Details

Immunogen	Full length human recombinant protein of human CTLA4 (NP_001032720) produced in HEK293T cell.
Isotype	IgG1
Concentration	1 mg/ml
Purification	Purified from mouse ascites fluids or tissue culture supernatant by affinity chromatography (protein A/G)
Suggested Dilutions	WB 1:500

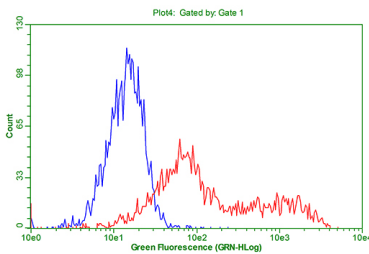
Anti-CTLA4 Mouse Monoclonal Antibody [Clone ID: OTI8F1] (M00020-2) Images



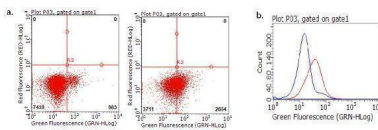
HEK293T cells were transfected with the pCMV6-ENTRY control (Left lane) or pCMV6-ENTRY CTLA4 (Right lane) cDNA for 48 hrs and lysed. Equivalent amounts of cell lysates (5 ug per lane) were separated by SDS-PAGE and immunoblotted with anti-CTLA4 (1:500).



Western blot analysis of human peripheral blood mononuclear cells (PBMCs) by using anti-CTLA4 monoclonal antibody. Left: Unstimulated PBMC. Right: PBMC stimulated with 10ug/ml Phytohemagglutinin for 3 days (1:100).



HEK293T cells transfected with either CTL4 plasmid (red) or empty vector control plasmid (blue). The cells were immunostained by anti-CTLA4 antibody and analyzed by flow cytometry (1:100).



Flow cytometric analysis of CTLA4 expression on stimulated human peripheral blood mononuclear cells (PBMC). Unstimulated PBMC

Submit a product review to Biocompare.com

Submit a review of this product to Biocompare.com to receive a \$20 Amazon.com giftcard! Your reviews help your fellow scientists make the right decisions. Thank you for your contribution.



Anti-CTLA4 Mouse Monoclonal Antibody [Clone ID: OTI8F1]

For Research Use Only. Not for use in diagnostic procedures.