

Anti-CTLA-4 / CD152 Reference Antibody (Antitope patent anti-CTLA4)

Catalog Number: M00020-4

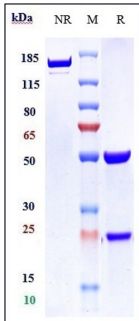
Overview

Product Name	Anti-CTLA-4 / CD152 Reference Antibody (Antitope patent anti-CTLA4)
Reactive Species	Human
Description	Boster Bio Anti-CTLA-4 / CD152 Reference Antibody (Antitope patent anti-CTLA4) (Catalog # M00020-4). Tested in Flow Cytometry, ELISA, FTA. This antibody reacts with Human. Endotoxin: < 0.051EU/ug,determined by LAL method. Expression system: CHO Cell
Application	ELISA, Flow Cytometry, Functional Assay, Kinetics
Clonality	Monoclonal
Formulation	Purified monoclonal antibody supplied in PBS, pH6.0, without preservative.This antibody is purified through a protein A column.
Storage Instructions	Maintain refrigerated at 2-8°C for up to 2 weeks. For long-term storage, aliquot and store at -20°C to avoid repeated freeze-thaw cycles.
Uniprot ID	P16410

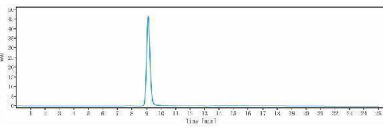
Technical Details

Isotype	IgG1
Form	Liquid

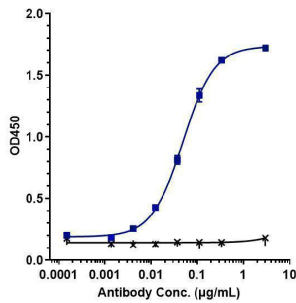
Anti-CTLA-4 / CD152 Reference Antibody (Antitope patent anti-CTLA4) (M00020-4) Images



Anti-CTLA-4/CD152 Reference Antibody (Antitope patent anti-CTLA4) on SDS-PAGE under reducing (R) condition. The gel was stained with Coomassie Blue. The purity of the protein is greater than 90%



The purity of Anti-CTLA-4/CD152 Reference Antibody (Antitope patent anti-CTLA4) is more than 95%



Immobilized human CTLA 4 His at 2 µg/mL can bind Anti-CTLA-4/CD152 Reference Antibody (Antitope patent anti-CTLA4)

Submit a product review to [Biocompare.com](https://www.biocompare.com)

Submit a review of this product to [Biocompare.com](https://www.biocompare.com) to receive a \$20 Amazon.com giftcard! Your reviews help your fellow scientists make the right decisions. Thank you for your contribution.



Anti-CTLA-4 / CD152 Reference Antibody (Antitope patent anti-CTLA4)

For Research Use Only. Not for use in diagnostic procedures.