

## Anti-IL10 Monoclonal Antibody

Catalog Number: M00021

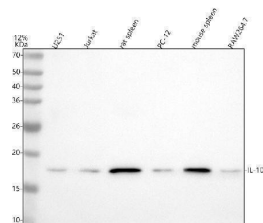
### Overview

Product Name	Anti-IL10 Monoclonal Antibody
Reactive Species	Human, Mouse, Rat
Description	Boster Bio Anti-IL10 Monoclonal Antibody catalog # M00021. Tested in WB, ICC/IF, Flow Cytometry applications. This antibody reacts with Human, Mouse, Rat.
Application	Flow Cytometry, IF, ICC, WB
Clonality	Monoclonal AOIG-9
Formulation	Rabbit IgG in stabilizing components, phosphate buffered saline, pH 7.4, 150mM NaCl, 0.02% sodium azide and 50% glycerol. *This antibody is supplied in a stabilized formulation. Compatibility with conjugation reactions depends on the chemistry of the conjugation method used. For conjugation methods that are not compatible with the stabilizing components present in this formulation, a carrier-free antibody format is required.
Storage Instructions	Store at -20°C for one year. For short term storage and frequent use, store at 4°C for up to one month. Avoid repeated freeze-thaw cycles.
Host	Rabbit
Uniprot ID	P22301

### Technical Details

Immunogen	A synthesized peptide derived from human IL10 Interleukin-10 (IL-10) is an anti-inflammatory cytokine that is produced by T cells, NK cells, and macrophages. IL-10 initiates signal transduction by binding to a cell surface receptor complex consisting of IL-10 RI and IL-10 RII, leading to the activation of Jak1 and Tyk2 and phosphorylation of Stat3.
Isotype	Rabbit IgG
Form	Liquid
Concentration	0.5mg/ml
Purification	Affinity-chromatography
Suggested Dilutions	WB 1:500-2000 ICC/IF 1:50-200 FC 1:20

## Anti-IL10 Monoclonal Antibody (M00021) Images



Western blot analysis of IL10 using anti-IL10 antibody (M00021). Electrophoresis was performed on a 5-20% SDS-PAGE gel at 70V (Stacking gel) / 90V (Resolving gel) for 2-3 hours. The sample well of each lane was loaded with 30 ug of sample under reducing conditions. Lane 1: human U251 whole cell lysates, Lane 2: human Jurkat whole cell lysates, Lane 3: rat spleen tissue lysates, Lane 4: rat PC-12 whole cell lysates, Lane 5: mouse spleen tissue lysates, Lane 6: mouse RAW264.7 whole cell lysates. After electrophoresis, proteins were transferred to a nitrocellulose membrane at 150 mA for 50-90 minutes. Blocked the membrane with 5% non-fat milk/TBS for 1.5 hour at RT. The membrane was incubated with rabbit anti-IL10 antigen affinity purified monoclonal antibody (M00021) at 1:500 overnight at 4°C, then washed with TBS-0.1%Tween 3 times with 5 minutes each and probed with a goat anti-rabbit IgG-HRP secondary antibody at a dilution of 1:500 for 1.5 hour at RT. The signal is developed using an Enhanced Chemiluminescent detection (ECL) kit (Catalog # EK1002) with Tanon 5200 system. A specific band was detected for IL10 at approximately 17 kDa. The expected band size for IL10 is at 21 kDa.

## 1 Publications Citing This Product

1. PubMed ID: 21595995, Wang R, Lu M, Zhang J, Chen S, Luo X, Qin Y, Chen H. J Exp Clin Cancer Res. 2011 May 20;30:62. Doi: 10.1186/1756-9966-30-62. Increased Il-10 Mrna Expression In Tumor-Associated Macrophage Correlated With Late Stage Of Lung Cancer.

Visit [bosterbio.com/anti-il10-antibody-m00021-boster.html](http://bosterbio.com/anti-il10-antibody-m00021-boster.html) to see all 1 publications.

## Submit a product review to Biocompare.com

Submit a review of this product to Biocompare.com to receive a \$20 Amazon.com giftcard! Your reviews help your fellow scientists make the right decisions. Thank you for your contribution.



Anti-IL10 Monoclonal Antibody

For Research Use Only. Not for use in diagnostic procedures.