

Anti-ERBB1/EGFR/HER1 Reference Antibody (cetuximab)

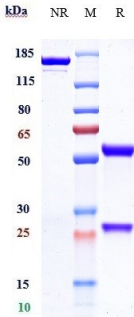
Catalog Number: M00023-6

Overview

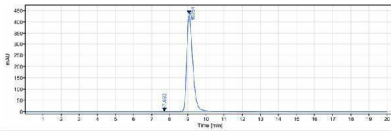
Product Name	Anti-ERBB1/EGFR/HER1 Reference Antibody (cetuximab)
Reactive Species	Cynomolgus monkey, Human, Mouse
Description	Boster Bio Anti-ERBB1/EGFR/HER1 Reference Antibody (cetuximab) (Catalog # M00023-6). Tested in Flow Cytometry, ELISA, FTA. This antibody reacts with Cynomolgus monkey, Human, Mouse. Endotoxin: < 0.008EU/ug,determined by LAL method. Expression system: CHO Cell
Application	ELISA, Flow Cytometry, Functional Assay, Kinetics
Clonality	Monoclonal
Storage Instructions	Maintain refrigerated at 2-8°C for up to 2 weeks. For long-term storage, aliquot and store at -20°C to avoid repeated freeze-thaw cycles.
Uniprot ID	P00533

Technical Details

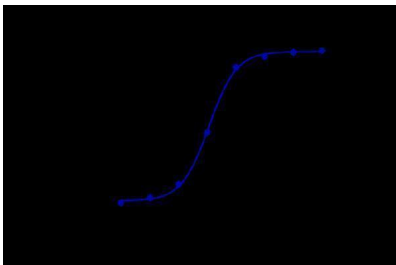
Anti-ERBB1/EGFR/HER1 Reference Antibody (cetuximab) (M00023-6) Images



Anti-ERBB1/EGFR/HER1 Reference Antibody (cetuximab) on SDS-PAGE under reducing (R) condition. The gel was stained with Coomassie Blue. The purity of the protein is greater than 95%



The purity of Anti-ERBB1/EGFR/HER1 Reference Antibody (cetuximab) is more than 99.92%



Human EGFR CHO-K cells were stained with Anti-ERBB1/EGFR/HER1 Reference Antibody (cetuximab) and negative control protein respectively

Submit a product review to [Biocompare.com](https://www.biocompare.com)

Submit a review of this product to [Biocompare.com](https://www.biocompare.com) to receive a \$20 Amazon.com giftcard! Your reviews help your fellow scientists make the right decisions. Thank you for your contribution.



Anti-ERBB1/EGFR/HER1 Reference Antibody (cetuximab)

For Research Use Only. Not for use in diagnostic procedures.