

Anti-AKT1 + AKT2 + AKT3 Rabbit Monoclonal Antibody

Catalog Number: M00024-7

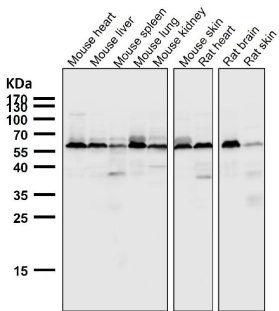
Overview

Product Name	Anti-AKT1 + AKT2 + AKT3 Rabbit Monoclonal Antibody
Reactive Species	Human, Mouse, Rat
Description	Boster Bio Anti-AKT1 + AKT2 + AKT3 Rabbit Monoclonal Antibody catalog # M00024-7. Tested in WB, IHC, ICC/IF, IP, Flow Cytometry applications. This antibody reacts with Human, Mouse, Rat.
Application	Flow Cytometry, IP, IF, IHC, ICC, WB
Clonality	Monoclonal 31A24
Formulation	Rabbit IgG in phosphate buffered saline, pH 7.4, 150mM NaCl, 0.02% sodium azide and 50% glycerol, 0.4-0.5mg/ml BSA.
Storage Instructions	Store at -20°C for one year. For short term storage and frequent use, store at 4°C for up to one month. Avoid repeated freeze-thaw cycles.
Host	Rabbit
Uniprot ID	P31749/P31751/Q9Y243

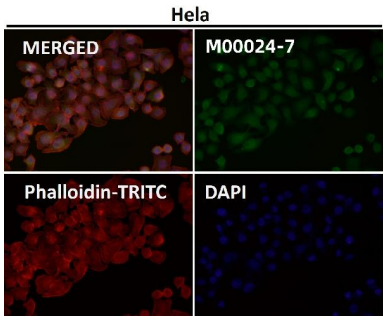
Technical Details

Immunogen	A synthesized peptide derived from human AKT1 + AKT2 + AKT3
Isotype	IgG
Form	Liquid
Concentration	Actual concentration vary by lot. Use suggested dilution ratio to decide dilution procedure.
Purification	Affinity-chromatography
Suggested Dilutions	<p>Dilute the sample so that the expected range of concentrations fall within the detection range of this kit.</p> <p>If the expected range of concentration is unknown, a pilot test should be conducted to decide the optimal dilution ratio for your samples.</p> <p>Some PubMed article(s) citing the expression level of this target are as follows:</p> <p>Boster Bio's internal QC testing used:</p> <p>WB 1:500-1:2000 IHC 1:50-1:100 ICC/IF 1:50-1:100 IP 1:50 FC 1:50</p>

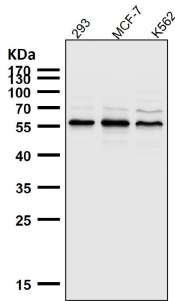
Anti-AKT1 + AKT2 + AKT3 Rabbit Monoclonal Antibody (M00024-7) Images



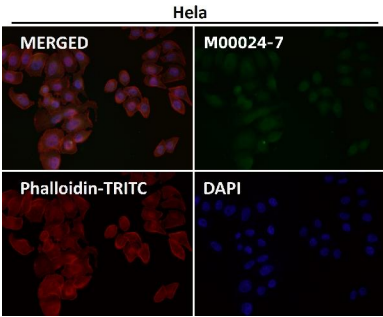
All lanes use the Antibody at 1:5K dilution for 1 hour at room temperature.



Immunofluorescent analysis using the Antibody at 1:50 dilution.

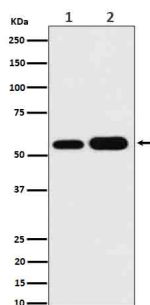
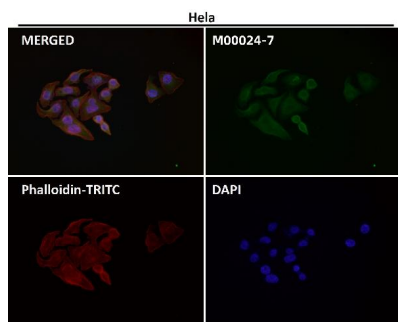


All lanes use the Antibody at 1:5K dilution for 1 hour at room temperature.

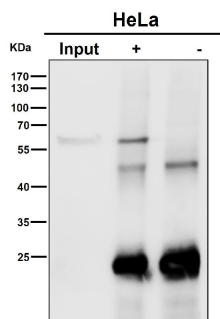


Immunofluorescent analysis using the Antibody at 1:150 dilution.

Immunofluorescent analysis using the Antibody at 1:50 dilution.



Western blot analysis of AKT1 + AKT2 + AKT3 expression in (1) HeLa cell lysate; (2) A549 cell lysate.



Immunoprecipitate (IP) analysis using the Antibody at 1:50 dilution. (wb at 1:1K dilution)

Submit a product review to Biocompare.com

Submit a review of this product to Biocompare.com to receive a \$20 Amazon.com giftcard! Your reviews help your fellow scientists make the right decisions. Thank you for your contribution.



Anti-AKT1 + AKT2 + AKT3 Rabbit Monoclonal Antibody