

Anti-MYD88 Rabbit Monoclonal Antibody, Clone#RM306

Catalog Number: M00025-1

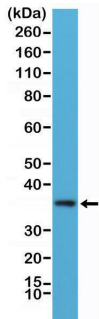
Overview

Product Name	Anti-MYD88 Rabbit Monoclonal Antibody, Clone#RM306
Reactive Species	Human
Description	Boster Bio Anti-MYD88 Rabbit Monoclonal Antibody, Clone#RM306 (Catalog # M00025-1). Tested in IHC, WB applications. This antibody reacts with Human.
Application	IHC, WB
Clonality	Monoclonal RM306
Formulation	50% Glycerol/PBS with 1% stabilizing protein and 0.09% sodium azide This antibody is supplied in a stabilized formulation. Compatibility with conjugation reactions depends on the chemistry of the conjugation method used. For conjugation methods that are not compatible with the stabilizing components present in this formulation, a carrier-free antibody format is required.
Storage Instructions	Store at -20°C for one year. Avoid repeated freeze-thaw cycles.
Host	Rabbit
Uniprot ID	Q99836

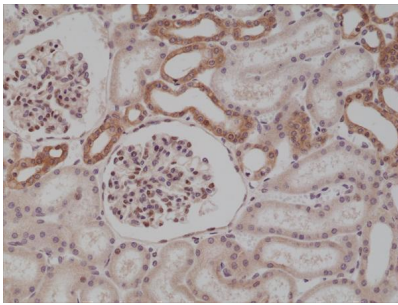
Technical Details

Immunogen	A peptide corresponding to the N-terminus of human MyD88
Cross Reactivity	This antibody reacts to human myeloid differentiation primary response protein MyD88
Isotype	Rabbit IgG
Form	Liquid
Concentration	0.5-1mg/ml, actual concentration vary by lot. Use suggested dilution ratio to decide dilution procedure.
Purification	Protein A affinity purified from an animal origin-free culture supernatant
Suggested Dilutions	Immunohistochemistry (IHC): 1:100-1:250 dilution WB: 1:100-1:200 dilution.

Anti-MYD88 Rabbit Monoclonal Antibody, Clone#RM306 (M00025-1) Images



Western Blotting result Western Blot of K562 cells lysate using anti-MyD88 rabbit monoclonal antibody (Clone RM306) at a 1:100 dilution.



IHC result Immunohistochemical staining of formalin fixed and paraffin embedded human kidney tissue section using anti-MyD88 rabbit monoclonal antibody (Clone RM306) at a 1:250 dilution.

2 Publications Citing This Product

1. PubMed ID: 26468333, High glucose induces and activates Toll-like receptor 4 in endothelial cells of diabetic retinopathy
2. PubMed ID: 25299052, Toll-Like Receptor 4 Prompts Human Breast Cancer Cells Invasiveness via Lipopolysaccharide Stimulation and Is Overexpressed in Patients with Lymph Node Metastasis

Visit bosterbio.com/anti-myd88-rabbit-monoclonal-antibody-clone-rm306-m00025-1-boster.html to see all 2 publications.

Submit a product review to Biocompare.com

Submit a review of this product to Biocompare.com to receive a \$20 Amazon.com giftcard! Your reviews help your fellow scientists make the right decisions. Thank you for your contribution.



Anti-MYD88 Rabbit Monoclonal Antibody, Clone#RM306

For Research Use Only. Not for use in diagnostic procedures.