

Anti-MYD88 Mouse Monoclonal Antibody [Clone ID: OTI2B2]

Catalog Number: M00025-3

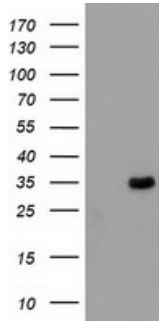
Overview

Product Name	Anti-MYD88 Mouse Monoclonal Antibody [Clone ID: OTI2B2]
Reactive Species	Human
Description	Boster Bio MYD88 mouse monoclonal antibody, clone OTI2B2 (formerly 2B2). Catalog# M00025-3. Tested in FC, IF, IHC, WB. This antibody reacts with Human.
Application	Flow Cytometry, IF, IHC, WB
Clonality	Monoclonal OTI2B2
Formulation	PBS (pH 7.3) containing 1% stabilizing protein, 50% glycerol and 0.02% sodium azide. This antibody is supplied in a stabilized formulation. Compatibility with conjugation reactions depends on the chemistry of the conjugation method used. For conjugation methods that are not compatible with the stabilizing components present in this formulation, a carrier-free antibody format is required.
Storage Instructions	Store at -20°C as received.
Host	Mouse
Uniprot ID	Q99836

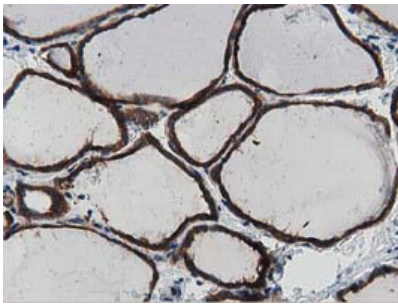
Technical Details

Immunogen	Full length human recombinant protein of human MYD88 (NP_002459) produced in HEK293T cell.
Isotype	IgG2a
Concentration	1 mg/ml
Purification	Purified from mouse ascites fluids or tissue culture supernatant by affinity chromatography (protein A/G)
Suggested Dilutions	WB 1:2000 IHC 1:150 IF 1:100 Flow Cytometry 1:100

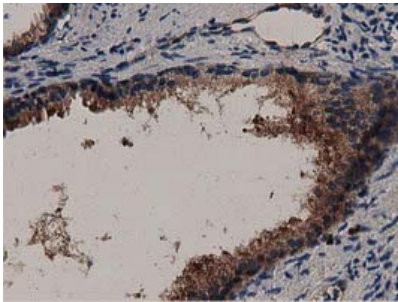
Anti-MYD88 Mouse Monoclonal Antibody [Clone ID: OTI2B2] (M00025-3) Images



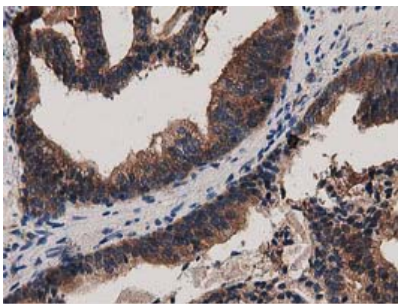
HEK293T cells were transfected with the pCMV6-ENTRY control (Left lane) or pCMV6-ENTRY MYD88 (Right lane) cDNA for 48 hrs and lysed. Equivalent amounts of cell lysates (5 ug per lane) were separated by SDS-PAGE and immunoblotted with anti-MYD88.



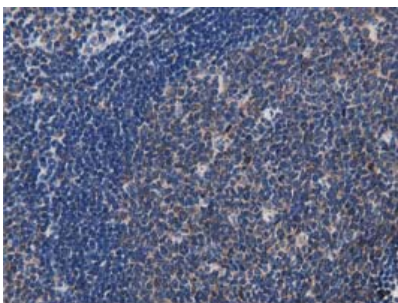
Immunohistochemical staining of paraffin-embedded Human thyroid tissue within the normal limits using anti-MYD88 mouse monoclonal antibody. (Heat-induced epitope retrieval by 10mM citric buffer)



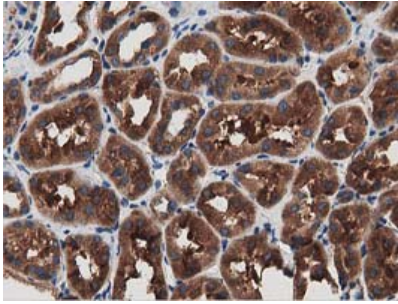
Immunohistochemical staining of paraffin-embedded Human prostate tissue within the normal limits using anti-MYD88 mouse monoclonal antibody. (Heat-induced epitope retrieval by 10mM citric buffer)



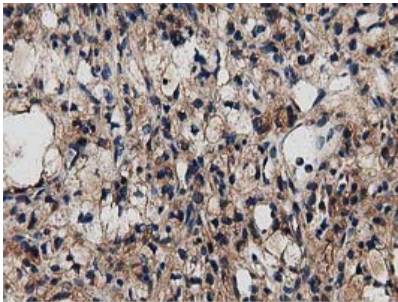
Immunohistochemical staining of paraffin-embedded Carcinoma of Human prostate tissue using anti-MYD88 mouse monoclonal antibody. (Heat-induced epitope retrieval by 10mM citric buffer)



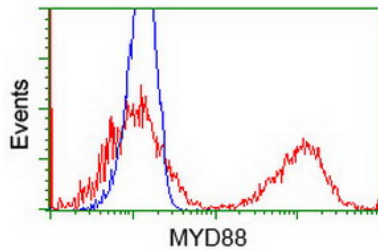
Immunohistochemical staining of paraffin-embedded Human lymph node tissue within the normal limits using anti-MYD88 mouse monoclonal antibody. (Heat-induced epitope retrieval by 10mM citric buffer)



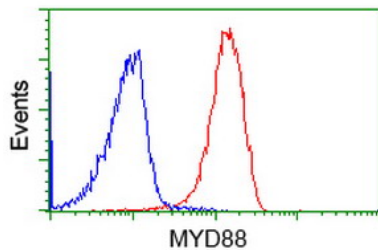
Immunohistochemical staining of paraffin-embedded Human Kidney tissue within the normal limits using anti-MYD88 mouse monoclonal antibody. (Heat-induced epitope retrieval by 10mM citric buffer)



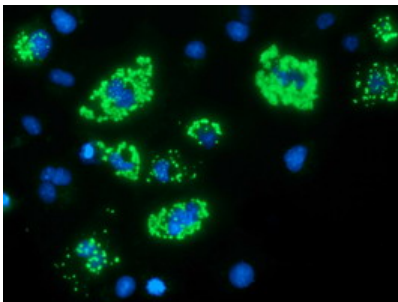
Immunohistochemical staining of paraffin-embedded Carcinoma of Human kidney tissue using anti-MYD88 mouse monoclonal antibody. (Heat-induced epitope retrieval by 10mM citric buffer)



HEK293T cells transfected with either MYD88 (Myc-DDK-tagged) overexpress plasmid (Red) or empty vector control plasmid (Blue) were immunostained by anti-MYD88 antibody (M00025-3)



Flow cytometric Analysis of Jurkat cells



Anti-MYD88 mouse monoclonal antibody (M00025-3) immunofluorescent staining of COS7 cells transiently transfected by pCMV6-ENTRY MYD88.

Submit a product review to [Biocompare.com](https://www.biocompare.com)

Submit a review of this product to [Biocompare.com](https://www.biocompare.com) to receive a \$20 Amazon.com giftcard! Your reviews help your fellow scientists make the right decisions. Thank you for your contribution.



Anti-MYD88 Mouse Monoclonal Antibody [Clone ID: OTI2B2]

For Research Use Only. Not for use in diagnostic procedures.