

Anti-MYD88 Mouse Monoclonal Antibody [Clone ID: OTI1B8]

Catalog Number: M00025-4

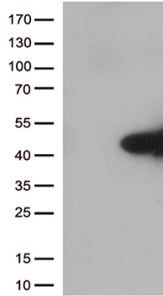
Overview

Product Name	Anti-MYD88 Mouse Monoclonal Antibody [Clone ID: OTI1B8]
Reactive Species	Human, Monkey, Rat
Description	Boster Bio MYD88 mouse monoclonal antibody, clone OTI1B8 (formerly 1B8). Catalog# M00025-4. Tested in FC, IF, WB. This antibody reacts with Human, Monkey, Rat.
Application	Flow Cytometry, IF, WB
Clonality	Monoclonal OTI1B8
Formulation	PBS (pH 7.3) containing 1% stabilizing protein, 50% glycerol and 0.02% sodium azide. This antibody is supplied in a stabilized formulation. Compatibility with conjugation reactions depends on the chemistry of the conjugation method used. For conjugation methods that are not compatible with the stabilizing components present in this formulation, a carrier-free antibody format is required.
Storage Instructions	Store at -20°C as received.
Host	Mouse
Uniprot ID	Q99836

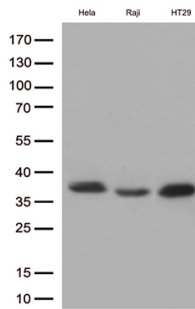
Technical Details

Immunogen	Full length human recombinant protein of human MYD88 (NP_002459) produced in HEK293T cell.
Isotype	IgG1
Concentration	0.4 mg/ml
Purification	Purified from mouse ascites fluids or tissue culture supernatant by affinity chromatography (protein A/G)
Suggested Dilutions	WB 1:1000~2000 IHC 1:150 IF 1:100 Flow Cytometry 1:100

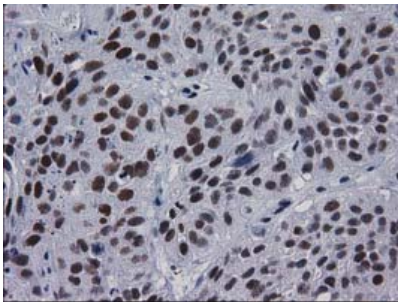
Anti-MYD88 Mouse Monoclonal Antibody [Clone ID: OTI1B8] (M00025-4) Images



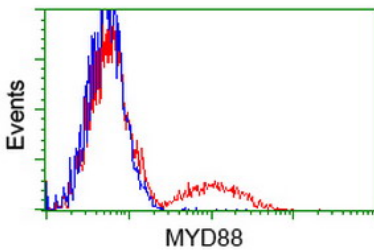
HEK293T cells were transfected with the pCMV6-ENTRY control (Left lane) or pCMV6-ENTRY MYD88 (Right lane) cDNA for 48 hrs and lysed. Equivalent amounts of cell lysates (5 ug per lane) were separated by SDS-PAGE and immunoblotted with anti-MYD88 (1:500).



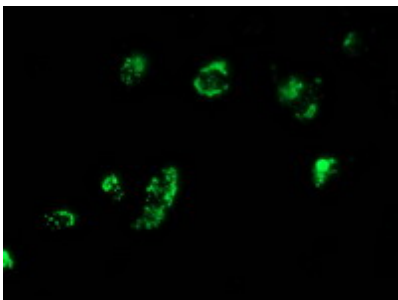
Western blot analysis of extracts (35ug) from 3 cell lines lysates by using anti-MYD88 monoclonal antibody (1:500).



Immunohistochemical staining of paraffin-embedded Carcinoma of Human bladder tissue using anti-MYD88 mouse monoclonal antibody. (Heat-induced epitope retrieval by 10mM citric buffer)



HEK293T cells transfected with either MYD88 (Myc-DDK-tagged) overexpress plasmid (Red) or empty vector control plasmid (Blue) were immunostained by anti-MYD88 antibody (M00025-4)



Anti-MYD88 mouse monoclonal antibody (M00025-4) immunofluorescent staining of COS7 cells transiently transfected by pCMV6-ENTRY MYD88 (1:100).

Submit a product review to Biocompare.com

Submit a review of this product to Biocompare.com to receive a \$20 Amazon.com giftcard! Your reviews help your fellow scientists make the right decisions. Thank you for your contribution.



Anti-MYD88 Mouse Monoclonal Antibody [Clone ID: OTI1B8]

For Research Use Only. Not for use in diagnostic procedures.