

## Anti-c-Myc (MYC) Mouse Monoclonal Antibody [Clone ID: OTI1A6]

Catalog Number: M00026-4

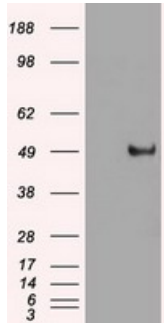
### Overview

Product Name	Anti-c-Myc (MYC) Mouse Monoclonal Antibody [Clone ID: OTI1A6]
Reactive Species	Human, Mouse, Rat
Description	Boster Bio c-Myc (c-Myc ) mouse monoclonal antibody, clone OTI1A6 (formerly 1A6). Catalog# M00026-4. Tested in FC, IF, IHC, WB. This antibody reacts with Human, Mouse, Rat.
Application	Flow Cytometry, IF, IHC, WB
Clonality	Monoclonal OTI1A6
Formulation	PBS (pH 7.3) containing 1% stabilizing protein, 50% glycerol and 0.02% sodium azide. This antibody is supplied in a stabilized formulation. Compatibility with conjugation reactions depends on the chemistry of the conjugation method used. For conjugation methods that are not compatible with the stabilizing components present in this formulation, a carrier-free antibody format is required.
Storage Instructions	Store at -20°C as received.
Host	Mouse
Uniprot ID	P01106

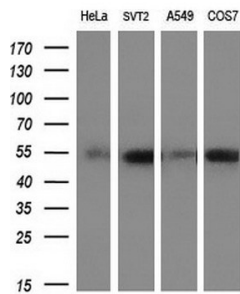
### Technical Details

Immunogen	Full length human recombinant protein of human Myc (NP_002458) produced in E.coli.
Isotype	IgG2b
Concentration	1 mg/ml
Purification	Purified from mouse ascites fluids or tissue culture supernatant by affinity chromatography (protein A/G)
Suggested Dilutions	WB: 1:2000 IHC: 1:50 IF: 1:100 Flow cytometry: 1:100

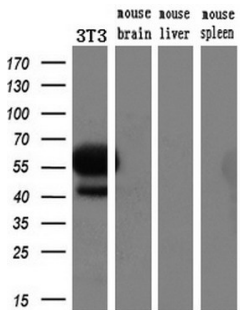
## Anti-c-Myc (MYC) Mouse Monoclonal Antibody [Clone ID: OTI1A6] (M00026-4) Images



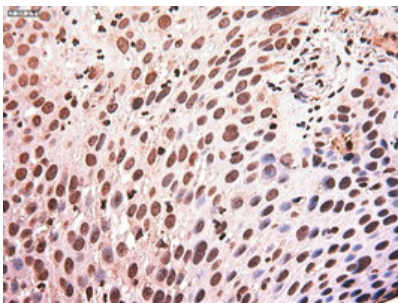
HEK293T cells were transfected with the pCMV6-ENTRY control (Left lane) or pCMV6-ENTRY MYC (Right lane) cDNA for 48 hrs and lysed. Equivalent amounts of cell lysates (5 ug per lane) were separated by SDS-PAGE and immunoblotted with anti-MYC.



Western blot analysis of extracts (10ug) from 4 different cell lines by using anti-MYC monoclonal antibody at 1:200 dilution.

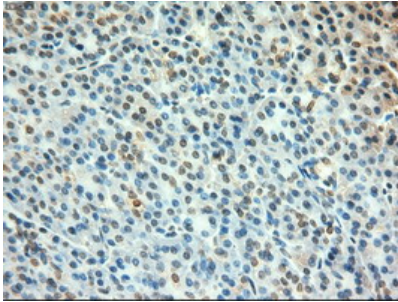
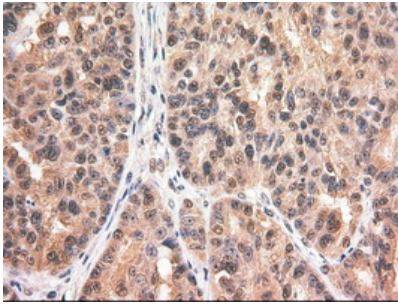


Western blot analysis of extracts (10ug) from a mouse cell line and 3 different mouse tissues by using anti-MYC monoclonal antibody (1:200).

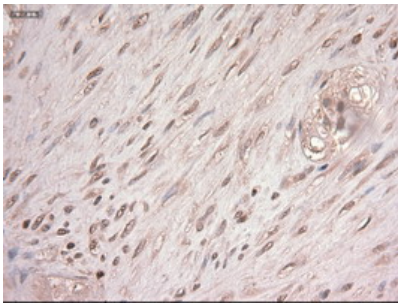


Immunohistochemical staining of paraffin-embedded Carcinoma of Human lung tissue using anti-MYC mouse monoclonal antibody. (Heat-induced epitope retrieval by 10mM citric buffer)

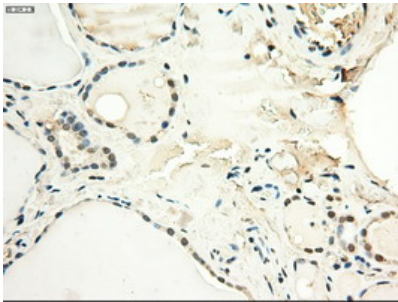
Immunohistochemical staining of paraffin-embedded Adenocarcinoma of Human ovary tissue using anti-MYC mouse monoclonal antibody. (Heat-induced epitope retrieval by 10mM citric buffer)



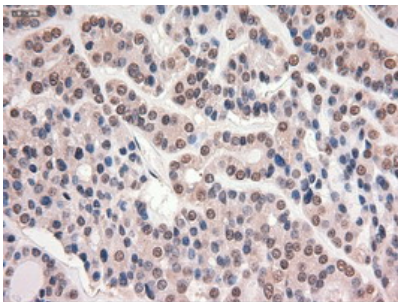
Immunohistochemical staining of paraffin-embedded Human pancreas tissue within the normal limits using anti-MYC mouse monoclonal antibody. (Heat-induced epitope retrieval by 10mM citric buffer)



Immunohistochemical staining of paraffin-embedded Carcinoma of Human pancreas tissue using anti-MYC mouse monoclonal antibody. (Heat-induced epitope retrieval by 10mM citric buffer)

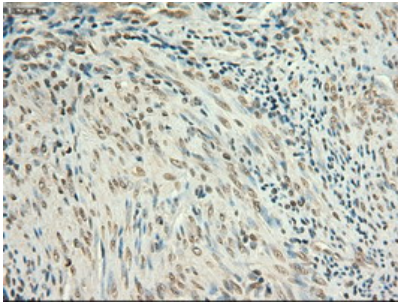


Immunohistochemical staining of paraffin-embedded Human thyroid tissue within the normal limits using anti-MYC mouse monoclonal antibody. (Heat-induced epitope retrieval by 10mM citric buffer)

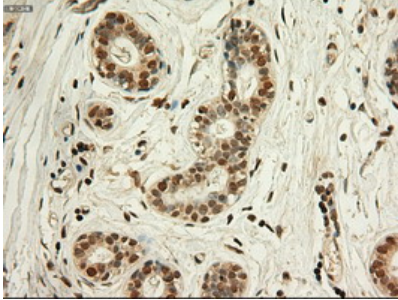


Immunohistochemical staining of paraffin-embedded Carcinoma of Human thyroid tissue using anti-MYC mouse monoclonal antibody. (Heat-induced epitope retrieval by 10mM citric buffer)

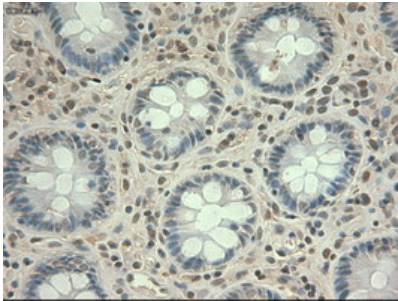
Immunohistochemical staining of paraffin-embedded Human endometrium tissue within the normal limits using anti-MYC mouse monoclonal antibody. (Heat-induced epitope retrieval



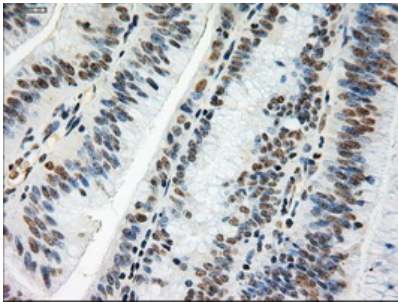
by 10mM citric buffer



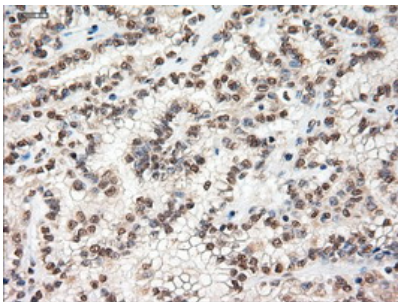
Immunohistochemical staining of paraffin-embedded Human breast tissue within the normal limits using anti-MYC mouse monoclonal antibody. (Heat-induced epitope retrieval by 10mM citric buffer)



Immunohistochemical staining of paraffin-embedded Human colon tissue within the normal limits using anti-MYC mouse monoclonal antibody. (Heat-induced epitope retrieval by 10mM citric buffer)

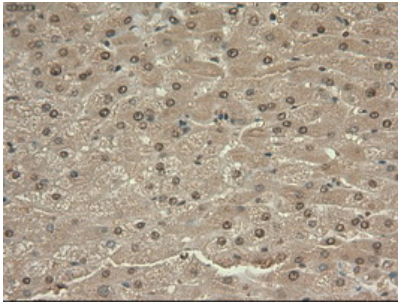


Immunohistochemical staining of paraffin-embedded Adenocarcinoma of Human colon tissue using anti-MYC mouse monoclonal antibody. (Heat-induced epitope retrieval by 10mM citric buffer)

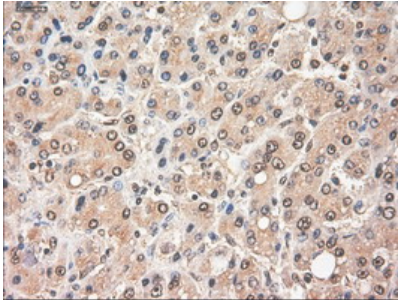


Immunohistochemical staining of paraffin-embedded Carcinoma of Human kidney tissue using anti-MYC mouse monoclonal antibody. (Heat-induced epitope retrieval by 10mM citric buffer)

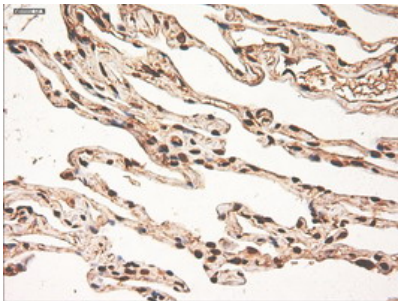
Immunohistochemical staining of paraffin-embedded Human liver tissue within the normal limits using anti-MYC mouse monoclonal antibody. (Heat-induced epitope retrieval by



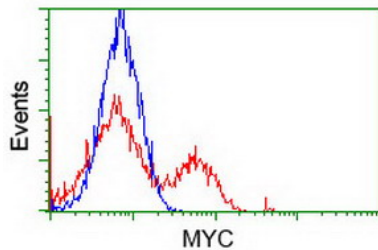
10mM citric buffer



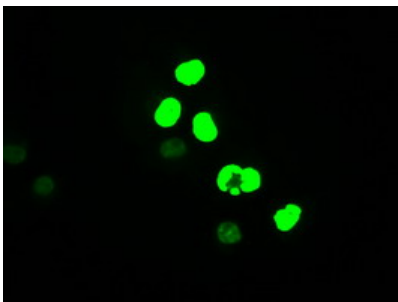
Immunohistochemical staining of paraffin-embedded Carcinoma of Human liver tissue using anti-MYC mouse monoclonal antibody. (Heat-induced epitope retrieval by 10mM citric buffer)



Immunohistochemical staining of paraffin-embedded Human lung tissue within the normal limits using anti-MYC mouse monoclonal antibody. (Heat-induced epitope retrieval by 10mM citric buffer)



HEK293T cells transfected with either MYC (Myc-DDK-tagged) overexpress plasmid (Red) or empty vector control plasmid (Blue) were immunostained by anti-MYC antibody (M00026-4)



Anti-MYC mouse monoclonal antibody (M00026-4) immunofluorescent staining of COS7 cells transiently transfected by pCMV6-ENTRY MYC.

Submit a product review to [Biocompare.com](https://www.biocompare.com)

Submit a review of this product to [Biocompare.com](https://www.biocompare.com) to receive a \$20 Amazon.com giftcard! Your



reviews help your fellow scientists make the right decisions. Thank you for your contribution.

Anti-c-Myc (MYC) Mouse Monoclonal Antibody [Clone ID: OT11A6]

For Research Use Only. Not for use in diagnostic procedures.