

Anti-ERK2 (MAPK1) Mouse Monoclonal Antibody [Clone ID: OTI6F8]

Catalog Number: M00030-1

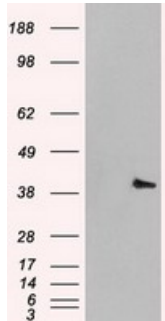
Overview

Product Name	Anti-ERK2 (MAPK1) Mouse Monoclonal Antibody [Clone ID: OTI6F8]
Reactive Species	Dog, Human, Monkey, Mouse, Rat
Description	Boster Bio Anti-MAPK1 (ERK2) mouse monoclonal antibody, clone OTI6F8 (formerly 6F8). Catalog# M00030-1. Tested in FC, IHC, IP, WB. This antibody reacts with Human, Monkey, Mouse, Rat, Dog.
Application	Flow Cytometry, IP, IHC, WB
Clonality	Monoclonal OTI6F8
Formulation	PBS (pH 7.3) containing 1% BSA, 50% glycerol and 0.02% sodium azide.
Storage Instructions	Store at -20°C as received.
Host	Mouse
Uniprot ID	P28482

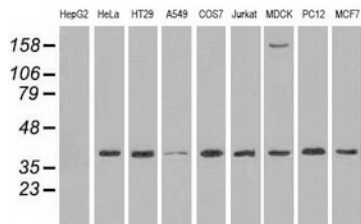
Technical Details

Immunogen	Full length human recombinant protein of human MAPK1 (NP_620407) produced in HEK293T cell.
Isotype	IgG2a
Concentration	1 mg/ml
Purification	Purified from mouse ascites fluids or tissue culture supernatant by affinity chromatography (protein A/G)
Suggested Dilutions	Dilute the sample so that the expected range of concentrations fall within the detection range of this kit. If the expected range of concentration is unknown, a pilot test should be conducted to decide the optimal dilution ratio for your samples. Some PubMed article(s) citing the expression level of this target are as follows:

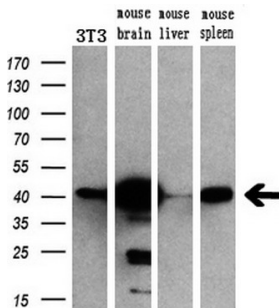
Anti-ERK2 (MAPK1) Mouse Monoclonal Antibody [Clone ID: OTI6F8] (M00030-1) Images



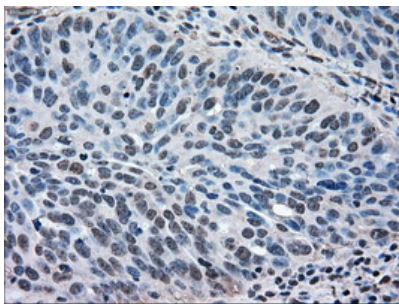
HEK293T cells were transfected with the pCMV6-ENTRY control (Left lane) or pCMV6-ENTRY MAPK1 (Right lane) cDNA for 48 hrs and lysed. Equivalent amounts of cell lysates (5 ug per lane) were separated by SDS-PAGE and immunoblotted with anti-MAPK1.



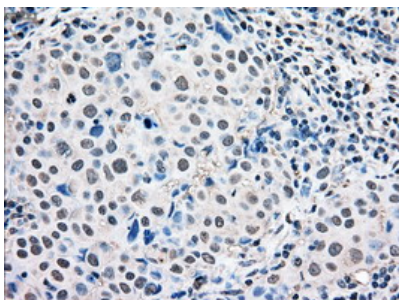
Western blot analysis of extracts (35ug) from 9 different cell lines by using anti-MAPK1 monoclonal antibody.



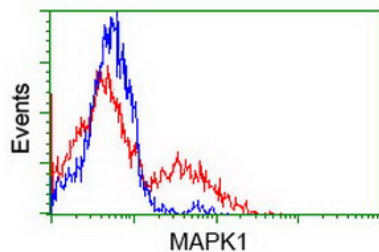
Western blot analysis of extracts (10ug) from a mouse cell line and 3 different mouse tissues by using anti-MAPK1 monoclonal antibody (1:200).



Immunohistochemical staining of paraffin-embedded Adenocarcinoma of Human ovary tissue using anti-MAPK1 mouse monoclonal antibody. (Heat-induced epitope retrieval by 10mM citric buffer)



Immunohistochemical staining of paraffin-embedded Adenocarcinoma of Human breast tissue using anti-MAPK1 mouse monoclonal antibody. (Heat-induced epitope retrieval by 10mM citric buffer)



HEK293T cells transfected with either MAPK1 (Myc-DDK-tagged) overexpress plasmid (Red) or empty vector control plasmid (Blue) were immunostained by anti-MAPK1 antibody (M00030-1)

Submit a product review to Biocompare.com

Submit a review of this product to Biocompare.com to receive a \$20 Amazon.com giftcard! Your reviews help your fellow scientists make the right decisions. Thank you for your contribution.



Anti-ERK2 (MAPK1) Mouse Monoclonal Antibody [Clone ID: OTI6F8]