

Anti-(Mouse) Notch1 Antibody (C-term)

Catalog Number: M00033-1

About Notch1

Functions as a receptor for membrane-bound ligands Jagged1, Jagged2 and Delta1 to regulate cell-fate determination. Upon ligand activation through the released notch intracellular domain (NICD) it forms a transcriptional activator complex with RBPJ/RBPSUH and activates genes of the enhancer of split locus. Affects the implementation of differentiation, proliferation and apoptotic programs. Involved in angiogenesis; negatively regulates endothelial cell proliferation and migration and angiogenic sprouting. Involved in the maturation of both CD4+ and CD8+ cells in the thymus. Important for follicular differentiation and possibly cell fate selection within the follicle. During cerebellar development, functions as a receptor for neuronal DNER and is involved in the differentiation of Bergmann glia. Represses neuronal and myogenic differentiation. May play an essential role in postimplantation development, probably in some aspect of cell specification and/or differentiation. May be involved in mesoderm development, somite formation and neurogenesis. May enhance HIF1A function by sequestering HIF1AN away from HIF1A. Required for the THBS4 function in regulating protective astrogenesis from the subventricular zone (SVZ) niche after injury. Involved in determination of left/right symmetry by modulating the balance between motile and immotile (sensory) cilia at the left-right organiser (LRO).

Overview

Product Name	Anti-(Mouse) Notch1 Antibody (C-term)
Reactive Species	Mouse
Description	Boster Bio Anti-(Mouse) Notch1 Antibody (C-term) (Catalog # M00033-1). Tested in WB application(s). This antibody reacts with Mouse.
Application	WB
Clonality	Polyclonal
Formulation	Purified polyclonal antibody supplied in PBS with 0.09% (W/V) sodium azide.
Storage Instructions	Maintain refrigerated at 2-8°C for up to 2 weeks. For long-term storage, store at -20°C in small aliquots to prevent freeze-thaw cycles.
Host	Rabbit
Uniprot ID	Q01705

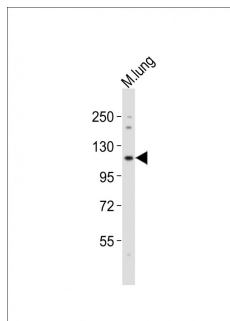
Technical Details

Immunogen	This Mouse Notch1 antibody is generated from a rabbit immunized with a KLH conjugated synthetic peptide between 2403-2437 amino acids from the C-terminal region of Mouse Notch1.
Predicted Reactive Species	Bovine
Isotype	Rabbit IgG
Purification	This antibody is purified through a protein A column, followed by peptide affinity purification.

Suggested Dilutions

WB: 1:2000

Anti-(Mouse) Notch1 Antibody (C-term) (M00033-1) Images



Anti-Notch1 Antibody (C-term) at 1:2000 dilution + mouse lung lysates. Lysates/proteins at 20 µg per lane. Secondary Goat Anti-Rabbit IgG, (H+L), Peroxidase conjugated at 1/10000 dilution. Predicted band size : 271 kDa. Blocking/Dilution buffer: 5% NFD/MTBST.

Submit a product review to Biocompare.com

Submit a review of this product to Biocompare.com to receive a \$20 Amazon.com giftcard! Your reviews help your fellow scientists make the right decisions. Thank you for your contribution.



Anti-(Mouse) Notch1 Antibody (C-term)

For Research Use Only. Not for use in diagnostic procedures.