

Anti-STAT1 alpha Rabbit Monoclonal Antibody

Catalog Number: M00036

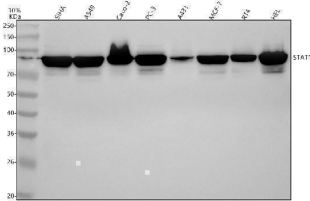
Overview

Product Name	Anti-STAT1 alpha Rabbit Monoclonal Antibody
Reactive Species	Human
Description	Boster Bio Anti-STAT1 alpha Rabbit Monoclonal Antibody catalog # M00036. Tested in WB, IHC, ICC/IF, IP, Flow Cytometry applications. This antibody reacts with Human.
Application	Flow Cytometry, IP, IF, IHC, ICC, WB
Clonality	Monoclonal HBG-19
Formulation	Rabbit IgG in stabilizing components, phosphate buffered saline, pH 7.4, 150mM NaCl, 0.02% sodium azide and 50% glycerol. *This antibody is supplied in a stabilized formulation. Compatibility with conjugation reactions depends on the chemistry of the conjugation method used. For conjugation methods that are not compatible with the stabilizing components present in this formulation, a carrier-free antibody format is required.
Storage Instructions	Store at -20°C for one year. For short term storage and frequent use, store at 4°C for up to one month. Avoid repeated freeze-thaw cycles.
Host	Rabbit
Uniprot ID	P42224

Technical Details

Immunogen	A synthesized peptide derived from human STAT1 alpha
Isotype	Rabbit IgG
Form	Liquid
Concentration	0.5mg/ml
Purification	Affinity-chromatography
Suggested Dilutions	WB 1:1000-5000 IHC 1:50-200 ICC/IF 1:50-200 IP 1:20 FC 1:20

Anti-STAT1 alpha Rabbit Monoclonal Antibody (M00036) Images



Western blot analysis of STAT1 using anti-STAT1 antibody (M00036). Electrophoresis was performed on a 5-20% SDS-PAGE gel at 70V (Stacking gel) / 90V (Resolving gel) for 2-3 hours. The sample well of each lane was loaded with 30 ug of sample under reducing conditions. Lane 1: human SiHa whole cell lysates, Lane 2: human A549 whole cell lysates, Lane 3: human Caco-2 whole cell lysates, Lane 4: human PC-3 whole cell lysates, Lane 5: human A431 whole cell lysates, Lane 6: human MCF-7 whole cell lysates, Lane 7: human RT4 whole cell lysates, Lane 8: human HEL whole cell lysates. After electrophoresis, proteins were transferred to a nitrocellulose membrane at 150 mA for 50-90 minutes. Blocked the membrane with 5% non-fat milk/TBS for 1.5 hour at RT. The membrane was incubated with rabbit anti-STAT1 antigen affinity purified monoclonal antibody (Catalog # M00036) at 1:5000 overnight at 4°C, then washed with TBS-0.1%Tween 3 times with 5 minutes each and probed with a goat anti-rabbit IgG-HRP secondary antibody at a dilution of 1:500 for 1.5 hour at RT. The signal is developed using an Enhanced Chemiluminescent detection (ECL) kit (Catalog # EK1002) with Tanon 5200 system. A specific band was detected for STAT1 at approximately 91 kDa. The expected band size for STAT1 is at 91 kDa.

2 Publications Citing This Product

1. PubMed ID: 28903386, Synergistic inhibition of colon cancer growth by the combination of methylglyoxal and silencing of glyoxalase I mediated by the STAT1 pathway
2. PubMed ID: 17696225, Hepatitis C virus non-structural 5A abrogates signal transducer and activator of transcription-1 nuclear translocation induced by IFN-alpha through dephosphorylation.

Visit bosterbio.com/anti-stat1-alpha-rabbit-monoclonal-antibody-m00036-boster.html to see all 2 publications.

Submit a product review to Biocompare.com

Submit a review of this product to Biocompare.com to receive a \$20 Amazon.com giftcard! Your reviews help your fellow scientists make the right decisions. Thank you for your contribution.



Anti-STAT1 alpha Rabbit Monoclonal Antibody

For Research Use Only. Not for use in diagnostic procedures.