

Anti-Rb1 (Tumor Suppressor Protein) Monoclonal Antibody

Catalog Number: M00039

About RB1

Recognizes a 105kDa phosphoprotein, identified as retinoblastoma (Rb) gene product. It shows no cross reaction with p107 or p130. It reacts with the hyper-phosphorylated as well as the un (under) phosphorylated form of the Rb protein. Retinoblastoma gene product plays a key role in cell cycle control. It has been identified as a tumor suppressor gene whose loss of its function leads to tumor development. It is widely expressed in a variety of human tissues including breast, esophageal, squamous cell and cervical carcinoma.

Overview

Product Name	Anti-Rb1 (Tumor Suppressor Protein) Monoclonal Antibody
Reactive Species	Human, Mouse
Description	Boster Bio Anti-Rb1 (Tumor Suppressor Protein) Monoclonal Antibody (Catalog # M00039). Tested in IHC applications. This antibody reacts with Human, Mouse.
Conjugate	Biotin
Application	IHC
Clonality	Monoclonal Clone: RB1/1754
Formulation	Prepared in 10mM PBS with 0.05% BSA & 0.05% azide. Also available WITHOUT BSA & azide at 1.0mg/ml.
Storage Instructions	Antibody with azide - store at 2 to 8°C. Antibody without azide - store at -20 to -80°C. Antibody is stable for 24 months. Non-hazardous. No MSDS required.
Host	Mouse
Uniprot ID	P06400

Technical Details

Immunogen	Recombinant human Rb1 protein
Predicted Reactive Species	Chimpanzee
Isotype	IgG1, kappa
Form	Liquid
Concentration	Purified antibody with BSA and azide at 200ug/ml
Purification	200ug/ml of antibody purified from Bioreactor Concentrate by Protein A/G.
Suggested Dilutions	Dilute the sample so that the expected range of concentrations fall within the detection range of this

kit.

If the expected range of concentration is unknown, a pilot test should be conducted to decide the optimal dilution ratio for your samples.

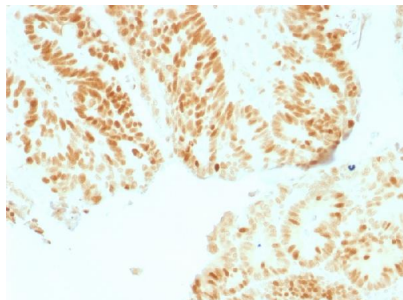
Some PubMed article(s) citing the expression level of this target are as follows:

Boster Bio's internal QC testing used:

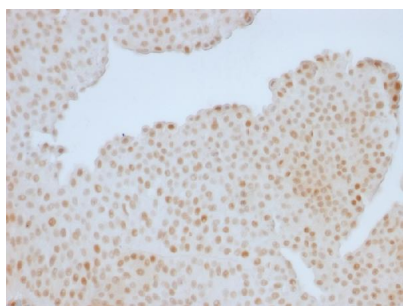
Immunohistochemistry (Formalin-fixed) (1-2ug/ml for 30 minutes at RT)(Staining of formalin-fixed tissues requires heating tissue sections in 10mM Tris with 1mM EDTA, pH 9.0, for 45 min at 95°C followed by cooling at RT for 20 minutes)

Optimal dilution for a specific application should be determined.

Anti-Rb1 (Tumor Suppressor Protein) Monoclonal Antibody (M00039) Images



Formalin-fixed, paraffin-embedded human Colon stained with Anti-Retinoblastoma (Rb1) Monoclonal Antibody (RB1/1754).



Formalin-fixed, paraffin-embedded human Colon stained with Anti-Retinoblastoma (Rb1) Monoclonal Antibody (RB1/1754).

Submit a product review to Biocompare.com

Submit a review of this product to Biocompare.com to receive a \$20 Amazon.com giftcard! Your reviews help your fellow scientists make the right decisions. Thank you for your contribution.



Anti-Rb1 (Tumor Suppressor Protein) Monoclonal Antibody