

Anti-Bcl-2 Rabbit Monoclonal Antibody

Catalog Number: M00040-1

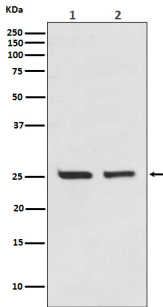
Overview

Product Name	Anti-Bcl-2 Rabbit Monoclonal Antibody
Reactive Species	Human
Description	Boster Bio Anti-Bcl-2 Rabbit Monoclonal Antibody catalog # M00040-1. Tested in WB, IHC, ICC/IF, IP, Flow Cytometry applications. This antibody reacts with Human.
Application	Flow Cytometry, IP, IF, IHC, ICC, WB
Clonality	Monoclonal HF-2
Formulation	Rabbit IgG in stabilizing components, phosphate buffered saline, pH 7.4, 150mM NaCl, 0.02% sodium azide and 50% glycerol. *This antibody is supplied in a stabilized formulation. Compatibility with conjugation reactions depends on the chemistry of the conjugation method used. For conjugation methods that are not compatible with the stabilizing components present in this formulation, a carrier-free antibody format is required.
Storage Instructions	Store at -20°C for one year. For short term storage and frequent use, store at 4°C for up to one month. Avoid repeated freeze-thaw cycles.
Host	Rabbit
Uniprot ID	P10415

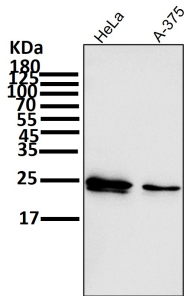
Technical Details

Immunogen	A synthesized peptide derived from human Bcl-2
Isotype	Rabbit IgG
Form	Liquid
Concentration	0.5mg/ml
Purification	Affinity-chromatography
Suggested Dilutions	WB 1:500-1:2000 IHC 1:50-1:100 ICC/IF 1:50-1:100 IP 1:50 FC 1:50

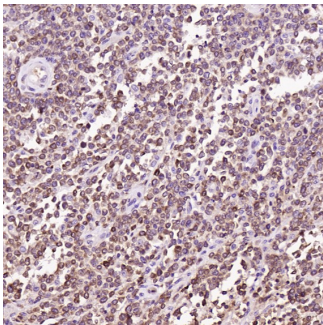
Anti-Bcl-2 Rabbit Monoclonal Antibody (M00040-1) Images



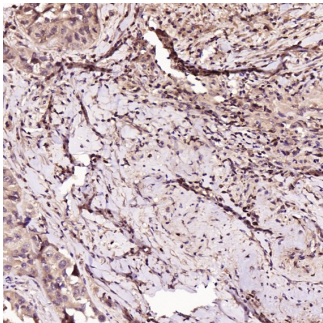
Western blot analysis of Bcl-2 expression in (1) Jurkat cell lysate;(2) MCF-7 cell lysate.



All lanes use the Antibody at 1:1W dilution for 1 hour at room temperature.

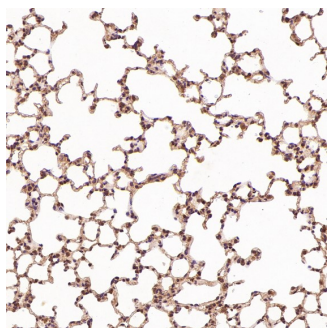


Immunohistochemical analysis of paraffin-embedded Human non-Hodgkin's lymphoma, using the Antibody at 1:50 dilution.

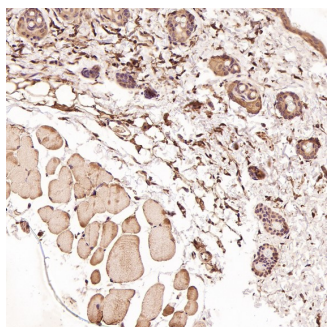


Immunohistochemical analysis of paraffin-embedded Human squamous cell carcinoma , using the Antibody at 1:50 dilution.

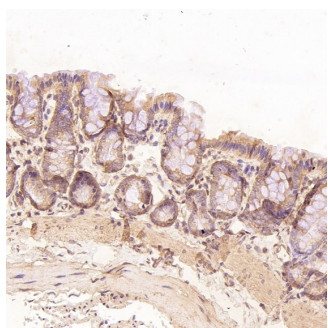
Immunohistochemical analysis of paraffin-embedded Rat liver, using the Antibody at 1:50 dilution.



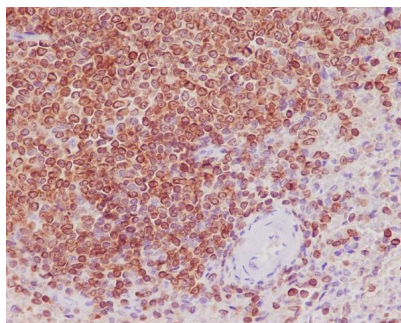
Immunohistochemical analysis of paraffin-embedded Mouse skin, using the Antibody at 1:50 dilution.



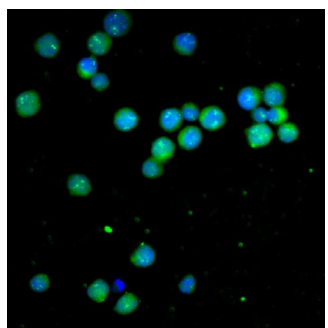
Immunohistochemical analysis of paraffin-embedded Rat stomach, using the Antibody at 1:50 dilution.



Immunohistochemical analysis of paraffin-embedded human spleen, using Bcl-2 Antibody.



Immunofluorescent analysis of Jurkat cells, using Bcl-2 Antibody .



40 Publications Citing This Product

1. PubMed ID: 25333250, Chen Xm, Xie Xb, Zhao Q, Wang F, Bai Y, Yin Jq, Jiang H, Xie Xi, Jia Q, Huang G. Mol Med Rep. 2015 Jan;11(1):105-12. Doi: 10.3892/Mmr.2014.2733. Epub 2014 Oct 21. Ampelopsin Induces Apoptosis By Regulating Multiple C-Myc/S-Phase Kinase-Associated ...
2. PubMed ID: 23426065, Li R, Wu X, Wei H, Tian S. Oncol Lett. 2013 Mar;5(3):877-883. Epub 2013 Jan 2. Characterization Of Side Population Cells Isolated From The Gastric Cancer Cell Line Sgc-7901.
3. PubMed ID: 18203291, Chen Xi, Cao Lq, She Mr, Wang Q, Huang Xh, Fu Xh. World J Gastroenterol. 2008 Jan 28;14(4):582-9. Gli-1 Sirna Induced Apoptosis In Huh7 Cells.

Visit bosterbio.com/anti-bcl-2-rabbit-monoclonal-antibody-m00040-1-boster.html to see all 40 publications.

Submit a product review to Biocompare.com

Submit a review of this product to Biocompare.com to receive a \$20 Amazon.com giftcard! Your reviews help your fellow scientists make the right decisions. Thank you for your contribution.



Anti-Bcl-2 Rabbit Monoclonal Antibody

For Research Use Only. Not for use in diagnostic procedures.