

Anti-Bcl-2 Rabbit Monoclonal Antibody

Catalog Number: M00040-2

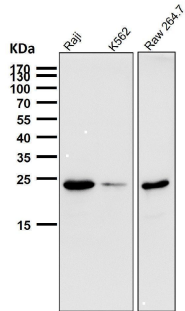
Overview

Product Name	Anti-Bcl-2 Rabbit Monoclonal Antibody
Reactive Species	Human, Mouse
Description	Boster Bio Anti-Bcl-2 Rabbit Monoclonal Antibody catalog # M00040-2. Tested in WB, IHC, ICC/IF, Flow Cytometry applications. This antibody reacts with Human, Mouse.
Application	Flow Cytometry, IF, IHC, ICC, WB
Clonality	Monoclonal AAOH-2
Formulation	Rabbit IgG in stabilizing components, phosphate buffered saline, pH 7.4, 150mM NaCl, 0.02% sodium azide and 50% glycerol. *This antibody is supplied in a stabilized formulation. Compatibility with conjugation reactions depends on the chemistry of the conjugation method used. For conjugation methods that are not compatible with the stabilizing components present in this formulation, a carrier-free antibody format is required.
Storage Instructions	Store at -20°C for one year. For short term storage and frequent use, store at 4°C for up to one month. Avoid repeated freeze-thaw cycles.
Host	Rabbit
Uniprot ID	P10415

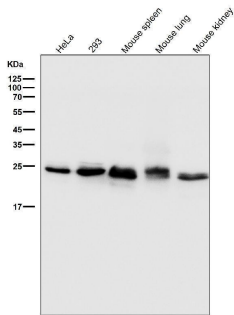
Technical Details

Immunogen	A synthesized peptide derived from human Bcl-2
Isotype	Rabbit IgG
Form	Liquid
Concentration	0.5mg/ml
Purification	Affinity-chromatography
Suggested Dilutions	WB 1:1000-1:2000 IHC 1:50-1:200 ICC/IF 1:50-1:200 FC 1:50

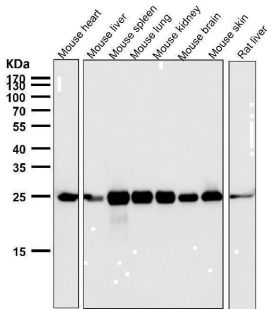
Anti-Bcl-2 Rabbit Monoclonal Antibody (M00040-2) Images



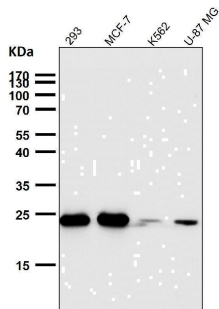
All lanes use the Antibody at 1:1W dilution for 1 hour at room temperature.



All lanes use the Antibody at 1:1W dilution for 1 hour at room temperature.

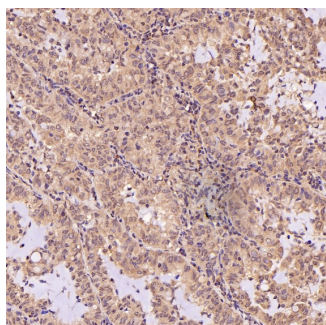
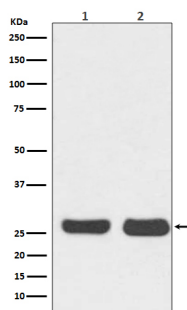


All lanes use the Antibody at 1:1W dilution for 1 hour at room temperature.

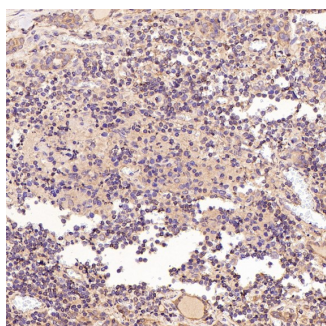


All lanes use the Antibody at 1:1W dilution for 1 hour at room temperature.

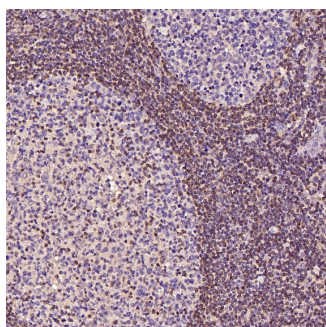
Western blot analysis of Bcl-2 expression in (1) HeLa cell lysate; (2) NIH/3T3 cell lysate.



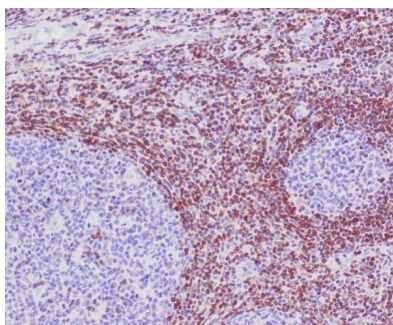
Immunohistochemical analysis of paraffin-embedded Human lung adenocarcinoma, using the Antibody at 1:100 dilution.



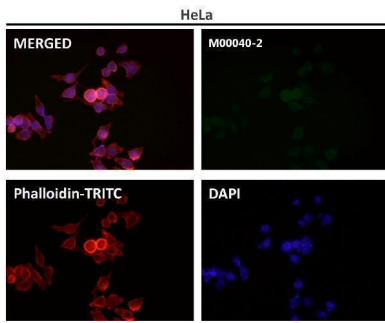
Immunohistochemical analysis of paraffin-embedded Human thyroid cancer, using the Antibody at 1:300 dilution.



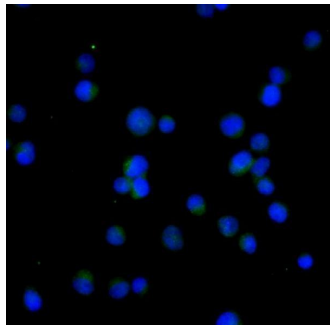
Immunohistochemical analysis of paraffin-embedded Human tonsil, using the Antibody at 1:300 dilution.



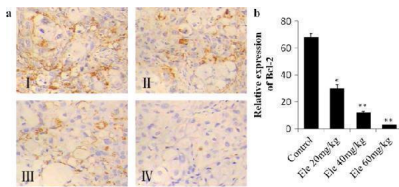
Immunohistochemical analysis of paraffin-embedded human tonsil, using Bcl-2 Antibody.



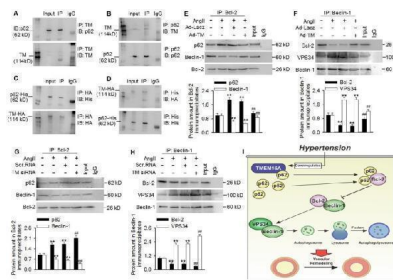
Immunofluorescent analysis using the Antibody at 1:150 dilution.



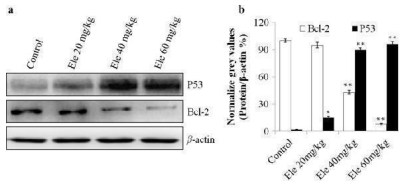
Immunofluorescent analysis of Jurkat cells, using Bcl-2 Antibody .



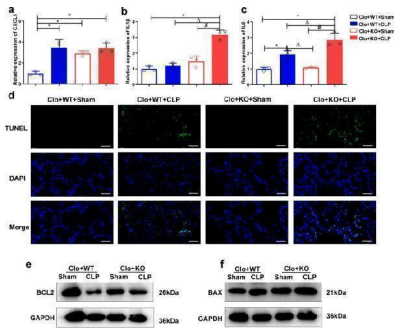
a Representative photographs of Bcl-2 immunological chemistry examination (200 ×). I: Control group, II: Elemene 20 mg/kg group, III: Elemene 40 mg/kg group, IV: Elemene 60 mg/kg group. b Quantification of P53 stained cells. * P



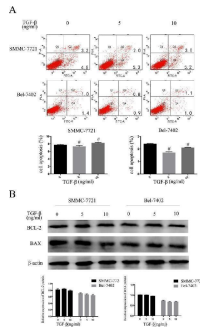
TMEM16A bound with p62 and modulated p62-Bcl-2-Beclin-1-VPS43 complex formation. (A and B) Immunoprecipitation (IP) followed by immunoblotting (IB) in MASM lysates showing presence of p62 in TMEM16A immunoprecipitates (A), and reciprocal immunoprecipitation showing the presence of TMEM16A in p62 immunoprecipitates (B). (C and D) MASM cells were co-transfected with vectors expressing TMEM16A tagged with HA and RFP, and p62 tagged with His. Western blot analysis for His (C) or HA (D) after immunoprecipitation with an HA or His antibody, respectively. n=5. (E-H) The cells were infected with Ad-Lacz or Ad-TM adenovirus (E and F, respectively), or transfected with scr.RNA or TM siRNA (G and H, respectively) for 48 h and then treated with AngII for another 24 h. Lysates were immunoprecipitated with a Bcl-2 (E and G) or Beclin-1 (F and H) antibody and immunoblotted with the indicated antibodies. **P < 0.01 vs. control; ###P < 0.01 vs. AngII, one-way ANOVA. n = 7. (I) Schematic representation of the study findings. TMEM16A bound with p62 and sequestered it from the p62-Bcl-2 complex. AngII-induced TMEM16A downregulation and led to reduced TMEM16A-p62 association and facilitated the binding of p62-Bcl-2, which limited formation of Bcl-2-Beclin-1 complexes. Finally, the enhanced Beclin-1-VPS34 association increased the kinase activity of VPS34 and initiated autophagy, leading to VSMC hyperplasia and remodeling. Index in PubMed under a CC BY license. PMID: 32226533



a Representative photographs of P53 and Bcl-2 expression on xenograft tumor lysate. b : Normalize grey values of P53 and Bcl-2 expression. * P



Mice reconstituted with FGF2 KO macrophages and subjected to CLP exhibit increased proinflammatory gene expression and apoptosis. a - c The expression of the inflammatory factors CXCL1, IL1beta, and IL6 in lung tissue was detected by real-time PCR (n = 3 per group). d TUNEL staining was used to evaluate apoptosis in the lung tissue. e - f The apoptosis-associated genes BCL2 and Bax were identified by western blot analysis. Bar is 20 um. * p



TGF-beta1 suppresses the HCC cells proliferative capacity but does not promote apoptosis. SMMC-7721 and BEL-7402 cells were treated with 0, 5ng/mL and 10ng/mL TGF-beta1 for 48 hours. A . apoptosis B . western blotting examined the expression levels of Bcl-2 and Bax. Data are expressed as the mean \pm SEM of three independent experiments, #P>0.05. Index in PubMed under a CC BY license. PMID: 28076850

39 Publications Citing This Product

- PubMed ID: 25333250, Chen Xm, Xie Xb, Zhao Q, Wang F, Bai Y, Yin Jq, Jiang H, Xie Xi, Jia Q, Huang G. Mol Med Rep. 2015 Jan;11(1):105-12. Doi: 10.3892/Mmr.2014.2733. Epub 2014 Oct 21. Ampelopsin Induces Apoptosis By Regulating Multiple C-Myc/S-Phase Kinase-Associated ...
- PubMed ID: 23426065, Li R, Wu X, Wei H, Tian S. Oncol Lett. 2013 Mar;5(3):877-883. Epub 2013 Jan 2. Characterization Of Side Population Cells Isolated From The Gastric Cancer Cell Line Sgc-7901.
- PubMed ID: 18203291, Chen Xi, Cao Lq, She Mr, Wang Q, Huang Xh, Fu Xh. World J Gastroenterol. 2008 Jan 28;14(4):582-9. Gli-1 Sirna Induced Apoptosis In Huh7 Cells.

Visit bosterbio.com/anti-bcl-2-rabbit-monoclonal-antibody-m00040-2-boster.html to see all 39 publications.

Submit a product review to Biocompare.com

Submit a review of this product to Biocompare.com to receive a \$20 Amazon.com giftcard! Your reviews help your fellow scientists make the right decisions. Thank you for your contribution.



Anti-Bcl-2 Rabbit Monoclonal Antibody

For Research Use Only. Not for use in diagnostic procedures.