

Anti-Bcl-2 Monoclonal Antibody

Catalog Number: M00040-3

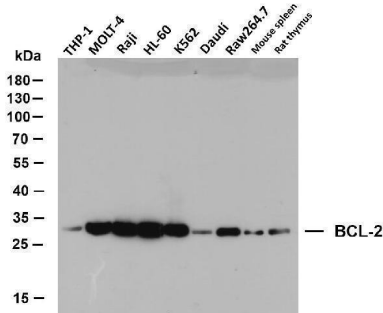
Overview

Product Name	Anti-Bcl-2 Monoclonal Antibody
Reactive Species	Human, Mouse, Rat
Description	Boster Bio Anti-Bcl-2 Monoclonal Antibody catalog # M00040-3. Tested in IHC, WB applications. This antibody reacts with Human, Mouse, Rat.
Application	ELISA, IF, WB
Clonality	Monoclonal 6B5
Formulation	Liquid in PBS containing 50% glycerol, 0.5% stabilizing protein and 0.02% sodium azide. This antibody is supplied in a stabilized formulation. Compatibility with conjugation reactions depends on the chemistry of the conjugation method used. For conjugation methods that are not compatible with the stabilizing components present in this formulation, a carrier-free antibody format is required.
Storage Instructions	Store at -20°C for one year. For short term storage and frequent use, store at 4°C for up to one month. Avoid repeated freeze-thaw cycles.
Host	Mouse
Uniprot ID	P10415

Technical Details

Immunogen	Synthetic Peptide of human Bcl-2 AA range: 1-100
Isotype	IgG
Form	Liquid
Concentration	0.73mg/mL
Purification	The antibody was affinity-purified from mouse ascites by affinity-chromatography using specific immunogen.
Suggested Dilutions	WB 1:500-2000 IF 1:100-500 ELISA 1:1000-5000

Anti-Bcl-2 Monoclonal Antibody (M00040-3) Images



Western blot analysis of lysates from 1)Hela cell , 2)Hela cells knockdown by siRNA1 (F:GGAUGACUGAGUACCUGAATT, R:UUCAGGUACUCAGUCAUCCTT) siRNA2 (F:GUGAUGAAGUACAUCCAUUAU, R:AUAAUGGAUGUACUUCAUCAC), (Green) primary antibody was diluted at 1:1000, 4° over night, Dylight 800 secondary antibody was diluted at 1:10000, 37° 1hour. (Red) GAPDH rabbit antibody was diluted at 1:5000 as loading control, 4° over night, Dylight 680 secondary antibody was diluted at 1:10000, 37° 1hour.



Various whole cell lysates were separated by 10% SDS-PAGE, and the membrane was blotted with anti-BCL-2 antibody. The HRP-conjugated Goat anti-Mouse IgG (H + L) antibody was used to detect the antibody. Lane 1: THP-1 Lane 2: MOLT-4 Lane 3: Raji Lane 4: HL-60 Lane 5: K562 Lane 6: Daudi Lane 7: Raw264.7 Lane 8: Mouse spleen Lane 9: Rat thymus

Submit a product review to Biocompare.com

Submit a review of this product to Biocompare.com to receive a \$20 Amazon.com giftcard! Your reviews help your fellow scientists make the right decisions. Thank you for your contribution.



Anti-Bcl-2 Monoclonal Antibody

For Research Use Only. Not for use in diagnostic procedures.