

Anti-RAC1 Antibody

Catalog Number: M00041-1

About RAC1

Plasma membrane-associated small GTPase which cycles between active GTP-bound and inactive GDP-bound states. In its active state, binds to a variety of effector proteins to regulate cellular responses such as secretory processes, phagocytosis of apoptotic cells, epithelial cell polarization and growth-factor induced formation of membrane ruffles. Rac1 p21/rho GDI heterodimer is the active component of the cytosolic factor sigma 1, which is involved in stimulation of the NADPH oxidase activity in macrophages. Essential for the SPATA13-mediated regulation of cell migration and adhesion assembly and disassembly. Stimulates PKN2 kinase activity. In concert with RAB7A, plays a role in regulating the formation of RBs (ruffled borders) in osteoclasts. In glioma cells, promotes cell migration and invasion. In podocytes, promotes nuclear shuttling of NR3C2; this modulation is required for a proper kidney functioning. Required for atypical chemokine receptor ACKR2-induced LIMK1-PAK1-dependent phosphorylation of cofilin (CFL1) and for up-regulation of ACKR2 from endosomal compartment to cell membrane, increasing its efficiency in chemokine uptake and degradation. In synapses, seems to mediate the regulation of F-actin cluster formation performed by SHANK3.

Overview

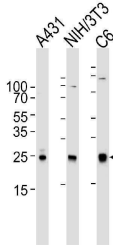
Product Name	Anti-RAC1 Antibody
Reactive Species	Human, Rat
Description	Boster Bio Anti-RAC1 Antibody (Catalog # M00041-1). Tested in IHC-P, Flow Cytometry, WB application(s). This antibody reacts with Human, Rat.
Application	Flow Cytometry, IHC-P, WB
Clonality	Monoclonal 1301CT276.121.104
Formulation	Purified monoclonal antibody supplied in PBS with 0.09% (W/V) sodium azide.
Storage Instructions	Maintain refrigerated at 2-8°C for up to 2 weeks. For long-term storage, store at -20°C in small aliquots to prevent freeze-thaw cycles.
Host	Mouse
Uniprot ID	P63000

Technical Details

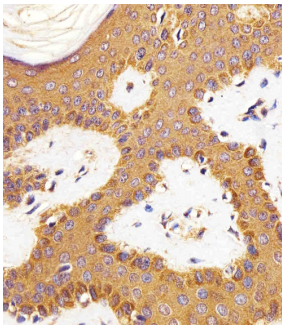
Immunogen	This antibody is generated from a mouse immunized with a KLH conjugated synthetic peptide between amino acids from human.
Predicted Reactive Species	Bovine, Mouse
Isotype	IgG2b
Purification	This antibody is purified through a protein G column, followed by dialysis against PBS.
Suggested Dilutions	WB: 1:1000

IHC-P: 1:25
FC: 1:100

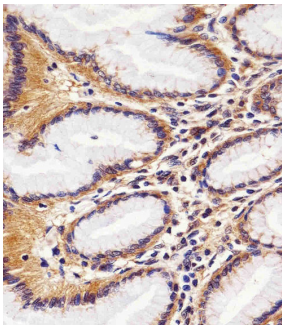
Anti-RAC1 Antibody (M00041-1) Images



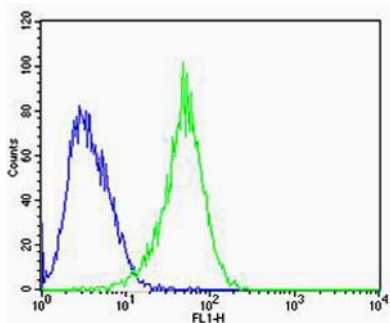
Western blot analysis of lysates from A431, mouse NIH/3T3, rat C6 cell line (from left to right), using RAC1 Antibody. M00041-1 was diluted at 1:1000 at each lane. A goat anti-mouse IgG H&L (HRP) at 1:3000 dilution was used as the secondary antibody. Lysates at 35ug per lane.



Immunohistochemical analysis of paraffin-embedded H. skin section using RAC1 (Cat#M00041-1). M00041-1 was diluted at 1:25 dilution. A peroxidase-conjugated goat anti-mouse IgG at 1:400 dilution was used as the secondary antibody, followed by DAB staining.



Immunohistochemical analysis of paraffin-embedded H. stomach section using RAC1 (Cat#M00041-1). M00041-1 was diluted at 1:25 dilution. A peroxidase-conjugated goat anti-mouse IgG at 1:400 dilution was used as the secondary antibody, followed by DAB staining.



Flow cytometric analysis of U-87 MG cells using RAC1 (green, Cat#M00041-1) compared to an isotype control of mouse IgG2b (blue). M00041-1 was diluted at 1:100 dilution. An Alexa Fluor® 488 goat anti-mouse IgG at 1:400 dilution was used as the secondary antibody.

Submit a product review to Biocompare.com

Submit a review of this product to Biocompare.com to receive a \$20 Amazon.com giftcard! Your reviews help your fellow scientists make the right decisions. Thank you for your contribution.



Anti-RAC1 Antibody

For Research Use Only. Not for use in diagnostic procedures.