

Anti-MeCP2 Antibody

Catalog Number: M00047-1

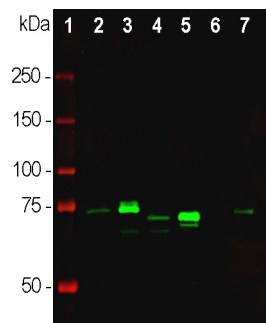
Overview

Product Name	Anti-MeCP2 Antibody
Reactive Species	Human, Monkey, Mouse, Rat
Description	Boster Bio Anti-MeCP2 Antibody catalog # M00047-1. Tested in IF, IHC, ICC, WB applications. This antibody reacts with Human, Monkey, Mouse, Rat.
Application	IF, IHC, ICC, WB
Clonality	Polyclonal
Formulation	Affinity purified at 1mg/mL in PBS, 50% glycerol, 5mM NaN ₃
Storage Instructions	Store at -20°C for one year. For short term storage and frequent use, store at 4°C for up to one month. Avoid repeated freeze-thaw cycles.
Host	Rabbit
Uniprot ID	P51608

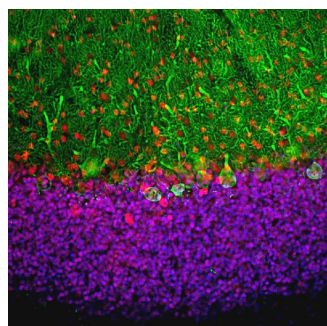
Technical Details

Immunogen	Full length recombinant human MeCP2
Concentration	0.5-1mg/ml, actual concentration vary by lot. Use suggested dilution ratio to decide dilution procedure.
Suggested Dilutions	<p>Dilute the sample so that the expected range of concentrations fall within the detection range of this kit.</p> <p>If the expected range of concentration is unknown, a pilot test should be conducted to decide the optimal dilution ratio for your samples.</p> <p>Some PubMed article(s) citing the expression level of this target are as follows:</p> <p>Boster Bio's internal QC testing used:</p> <p>WB: 1:10,000-1:20,000 IF/ICC or IHC: 1:2,000</p>

Anti-MeCP2 Antibody (M00047-1) Images



Western blot analysis of tissue and cell lysates using rabbit pAb to MeCP2, M00047-1, dilution 1:20,000 in green: [1] protein standard (red), [2] Rat whole brain, [3] nuclear fraction of rat brain, [4] mouse whole brain, [5] nuclear fraction of mouse brain, [6] HeLa cells, [7] C6 cells. Major band at about 70-75 kDa corresponds to MeCP2 protein, predominantly detected in the nuclear fraction of the lysates. The apparent molecular weights of MeCP2 based on SDS-PAGE mobility are variable between species and higher than the actual MeCP2 molecular weight which is ~54kDa



Immunofluorescent analysis of rat cerebellum section costained with rabbit pAb to MeCP2, M00047-1, dilution 1:5,000, in red, and chicken pAb to calbindin, dilution 1:2,000, in green. Blue is DAPI staining of nuclear DNA. Following transcardial perfusion with 4% paraformaldehyde, brain was post fixed for 24 hours, cut to 45 M, and free-floating sections were stained with above antibodies. The MeCP2 antibody selectively stains nuclei of neuronal cells. Calbindin, often used as Purkinje cell marker, is prominently expressed in dendrites and perikarya of these cells in the cerebellar molecular layer.

Submit a product review to Biocompare.com

Submit a review of this product to Biocompare.com to receive a \$20 Amazon.com giftcard! Your reviews help your fellow scientists make the right decisions. Thank you for your contribution.



Anti-MeCP2 Antibody