

Anti-KMT6 / EZH2 Rabbit Monoclonal Antibody

Catalog Number: M00050

About EZH2

Phosphoinositide-3-kinase (PI3K) that phosphorylates PtdIns (Phosphatidylinositol), PtdIns4P (Phosphatidylinositol 4-phosphate) and PtdIns (4,5) P2 (Phosphatidylinositol 4,5-bisphosphate) to generate phosphatidylinositol 3,4,5-trisphosphate (PIP3) . PIP3 plays a key role by recruiting PH domain-containing proteins to the membrane, including AKT1 and PDK1, activating signaling cascades involved in cell growth, survival, proliferation, motility and morphology. Participates in cellular signaling in response to various growth factors.

Overview

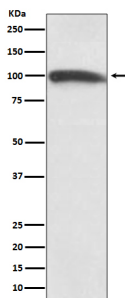
Product Name	Anti-KMT6 / EZH2 Rabbit Monoclonal Antibody
Reactive Species	Human
Description	Boster Bio Anti-KMT6 / EZH2 Rabbit Monoclonal Antibody catalog # M00050. Tested in WB application. This antibody reacts with Human.
Application	WB
Clonality	Monoclonal A000-5
Formulation	Rabbit IgG in phosphate buffered saline, pH 7.4, 150mM NaCl, 0.02% sodium azide and 50% glycerol, 0.4-0.5mg/ml BSA.
Storage Instructions	Store at -20°C for one year. For short term storage and frequent use, store at 4°C for up to one month. Avoid repeated freeze-thaw cycles.
Host	Rabbit
Uniprot ID	Q15910

Technical Details

Immunogen	A synthesized peptide derived from human KMT6 / EZH2
Isotype	Rabbit IgG
Form	Liquid
Concentration	Actual concentration vary by lot. Use suggested dilution ratio to decide dilution procedure.
Purification	Affinity-chromatography
Suggested Dilutions	Dilute the sample so that the expected range of concentrations fall within the detection range of this kit. If the expected range of concentration is unknown, a pilot test should be conducted to decide the optimal dilution ratio for your samples. Some PubMed article(s) citing the expression level of this target are as follows:

	Boster Bio's internal QC testing used: WB 1:500-1:2000
--	---

Anti-KMT6 / EZH2 Rabbit Monoclonal Antibody (M00050) Images



Western blot analysis of KMT6 / EZH2 expression in HeLa cell lysate.

1 Publications Citing This Product

1. PubMed ID: 26265454, Enhancer of zeste homolog 2 silencing inhibits tumor growth and lung metastasis in osteosarcoma

Visit bosterbio.com/anti-kmt6-ezh2-rabbit-monoclonal-antibody-m00050-boster.html to see all 1 publications.

Submit a product review to Biocompare.com

Submit a review of this product to Biocompare.com to receive a \$20 Amazon.com giftcard! Your reviews help your fellow scientists make the right decisions. Thank you for your contribution.



Anti-KMT6 / EZH2 Rabbit Monoclonal Antibody