

Anti-CCL2 / MCP1 Reference Antibody (carlumab)

Catalog Number: M00056-2

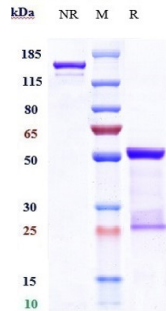
Overview

Product Name	Anti-CCL2 / MCP1 Reference Antibody (carlumab)
Reactive Species	Human, Mouse
Description	Boster Bio Anti-CCL2 / MCP1 Reference Antibody (carlumab) (Catalog # M00056-2). Tested in Flow Cytometry, ELISA, FTA. This antibody reacts with Human, Mouse. Endotoxin: < 0.093EU/ug,determined by LAL method. Expression system: CHO Cell
Application	ELISA, Flow Cytometry, Functional Assay, Kinetics
Clonality	Monoclonal
Formulation	Purified monoclonal antibody supplied in PBS, pH6.0, without preservative.This antibody is purified through a protein A column.
Storage Instructions	Maintain refrigerated at 2-8°C for up to 2 weeks. For long-term storage, aliquot and store at -20°C to avoid repeated freeze-thaw cycles.
Uniprot ID	P13500

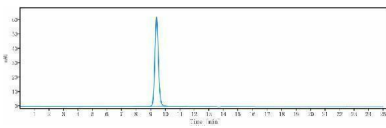
Technical Details

Isotype	IgG1
Form	Liquid

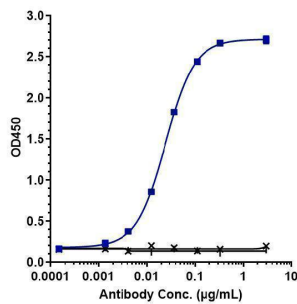
Anti-CCL2 / MCP1 Reference Antibody (carlumab) (M00056-2) Images



Anti-CCL2/MCP1 Reference Antibody (carlumab) on SDS-PAGE under reducing (R) condition. The gel was stained with Coomassie Blue. The purity of the protein is greater than 90%



The purity of Anti-CCL2/MCP1 Reference Antibody (carlumab) is more than 95%



Immobilized human MCP1 His at 2 µg/mL can bind Anti-CCL2/MCP1 Reference Antibody (carlumab)

Submit a product review to Biocompare.com

Submit a review of this product to Biocompare.com to receive a \$20 Amazon.com giftcard! Your reviews help your fellow scientists make the right decisions. Thank you for your contribution.



Anti-CCL2 / MCP1 Reference Antibody (carlumab)

For Research Use Only. Not for use in diagnostic procedures.