

Anti-Estrogen Receptor Alpha ESR1 Antibody (Monoclonal, C-542)

Catalog Number: M00057

About ESR1

The estrogen receptor alpha (ERalpha, UniProt/Swiss-Prot entry P03372) belongs to the family of nuclear hormone receptors, which are ligand-activated transcription factors. They are important for the regulation of gene expression, cellular proliferation and differentiation, sexual development and reproductive function. Estrogen receptors are also involved in pathological processes such as breast cancer, and osteoporosis. ERalpha can regulate transcription by direct binding to estrogen response elements (EREs) in the DNA or by interaction with other transcription factors. It may also form a heterodimer with ERbeta.

Overview

Product Name	Anti-Estrogen Receptor Alpha ESR1 Antibody (Monoclonal, C-542)
Reactive Species	Hamster, Human, Mouse, Rat
Description	Boster Bio Anti-Estrogen Receptor Alpha ESR1 Antibody (Monoclonal, C-542) (Catalog# M00057). Tested in ICC, IHC, IP, WB application(s). This antibody reacts with Human, Mouse, Rat, Hamster.
Conjugate	PE
Application	IP, IHC, ICC, WB
Clonality	Monoclonal C-542
Formulation	Liquid. In PBS containing 50% glycerol and 0.09% sodium azide.
Storage Instructions	Store at -20°C for long-term storage. Avoid freeze/thaw cycles.
Host	Mouse
Uniprot ID	P03372

Technical Details

Immunogen	Synthetic peptide corresponding to the sequence near the C-terminus of human Estrogen Receptor alpha
Predicted Reactive Species	Bovine, Goat, Guinea Pig, Hamster, Monkey, Sheep
Isotype	IgG1
Form	Liquid
Concentration	0.5-1mg/ml, actual concentration vary by lot. Use suggested dilution ratio to decide dilution procedure.
Purification	Protein G affinity purified.

Suggested Dilutions

Dilute the sample so that the expected range of concentrations fall within the detection range of this kit.

If the expected range of concentration is unknown, a pilot test should be conducted to decide the optimal dilution ratio for your samples.

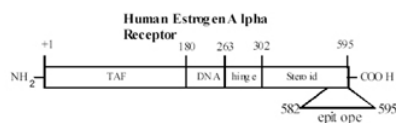
Some PubMed article(s) citing the expression level of this target are as follows:

Boster Bio's internal QC testing used:

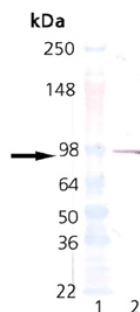
Western Blot (1:500, colorimetric). Detects a band of 66.3kDa.

Suggested dilutions/conditions may not be available for all applications. Optimal conditions must be determined individually for each application.

Anti-Estrogen Receptor Alpha ESR1 Antibody (Monoclonal, C-542) (M00057) Images



Human Estrogen Alpha Receptor domains.



Western blot analysis of Estrogen Receptor Alpha expression in MW marker (lane 1) and Estrogen Receptor 1 (lane 2). Estrogen Receptor Alpha at 92KD was detected using mouse anti-Estrogen Receptor Alpha Antigen Affinity purified monoclonal antibody (Catalog # M00057) at 1:500. The blot was developed using colorimetric method.

3 Publications Citing This Product

1. PubMed ID: 25864222, Effects of estradiol on liver estrogen receptor- α and its mRNA expression in hepatic fibrosis in rats
2. PubMed ID: 12133481, Fas counterattack in cholangiocarcinoma: A mechanism for immune evasion in human hilar cholangiocarcinomas
3. PubMed ID: 4717014, Effects of estradiol on liver estrogen receptor- α and its mRNA expression in hepatic fibrosis in rats

Visit bosterbio.com/anti-estrogen-receptor-alpha-antibody-monoclonal-c-542-m00057-boster.html to see all 3 publications.

Submit a product review to Biocompare.com

Submit a review of this product to Biocompare.com to receive a \$20 Amazon.com giftcard! Your reviews help your fellow scientists make the right decisions. Thank you for your contribution.



Anti-Estrogen Receptor Alpha ESR1 Antibody (Monoclonal, C-542)