

## Anti-ER alpha ESR1 Rabbit Monoclonal Antibody, Clone#RM292

Catalog Number: M00057-3

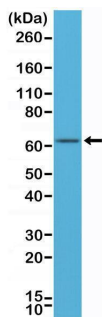
### Overview

Product Name	Anti-ER alpha ESR1 Rabbit Monoclonal Antibody, Clone#RM292
Reactive Species	Human
Description	Boster Bio Anti-ER alpha ESR1 Rabbit Monoclonal Antibody, Clone#RM292 (Catalog # M00057-3). Tested in IHC, WB applications. This antibody reacts with Human.
Application	IHC, WB
Clonality	Monoclonal RM292
Formulation	50% Glycerol/PBS with 1% stabilizing protein and 0.09% sodium azide This antibody is supplied in a stabilized formulation. Compatibility with conjugation reactions depends on the chemistry of the conjugation method used. For conjugation methods that are not compatible with the stabilizing components present in this formulation, a carrier-free antibody format is required.
Storage Instructions	Store at -20°C for one year. Avoid repeated freeze-thaw cycles.
Host	Rabbit
Uniprot ID	P03372

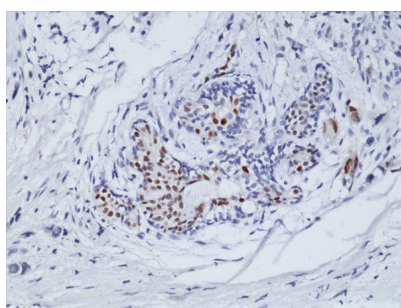
### Technical Details

Immunogen	A peptide corresponding to residues near the N-terminus of human ER-alpha.
Cross Reactivity	This antibody reacts to reacts to human ER-alpha (Estrogen receptor).
Isotype	Rabbit IgG
Form	Liquid
Concentration	0.5-1mg/ml, actual concentration vary by lot. Use suggested dilution ratio to decide dilution procedure.
Purification	Protein A affinity purified from an animal origin-free culture supernatant
Suggested Dilutions	Immunohistochemistry (IHC): 1:100-1:200 dilution WB: 1:200-1:500 dilution.

## Anti-ER alpha ESR1 Rabbit Monoclonal Antibody, Clone#RM292 (M00057-3) Images



Western Blotting result Western Blot of MCF-7 cell lysates using anti-ER-alpha rabbit monoclonal antibody (clone RM292) at a 1:500 dilution.



IHC result Immunohistochemical staining of formalin fixed and paraffin embedded human breast cancer tissue sections using anti-ER-alpha rabbit monoclonal antibody (clone RM292) at a 1:100 dilution.

### Submit a product review to Biocompare.com

Submit a review of this product to Biocompare.com to receive a \$20 Amazon.com giftcard! Your reviews help your fellow scientists make the right decisions. Thank you for your contribution.



Anti-ER alpha ESR1 Rabbit Monoclonal Antibody, Clone#RM292

For Research Use Only. Not for use in diagnostic procedures.