

## Anti-CADH1 Antibody

Catalog Number: M00063

### About CDH1

Cadherins are calcium-dependent cell adhesion proteins. They preferentially interact with themselves in a homophilic manner in connecting cells; cadherins may thus contribute to the sorting of heterogeneous cell types. CDH1 is involved in mechanisms regulating cell-cell adhesions, mobility and proliferation of epithelial cells. Has a potent invasive suppressor role. It is a ligand for integrin alpha-E/beta-7.

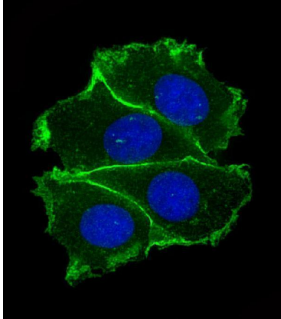
### Overview

Product Name	Anti-CADH1 Antibody
Reactive Species	Human
Description	Boster Bio Anti-CADH1 Antibody (Catalog # M00063). Tested in WB, IHC-P, IF application(s). This antibody reacts with Human.
Application	IF, IHC-P, WB
Clonality	Monoclonal 1579CT577.150.80
Formulation	Purified monoclonal antibody supplied in PBS with 0.09% (W/V) sodium azide.
Storage Instructions	Maintain refrigerated at 2-8°C for up to 2 weeks. For long-term storage, store at -20°C in small aliquots to prevent freeze-thaw cycles.
Host	Mouse
Uniprot ID	P12830

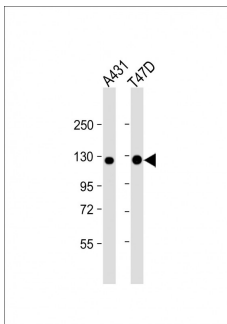
### Technical Details

Immunogen	This CADH1 antibody is generated from a mouse immunized with a recombinant protein between 1-392 amino acids from human CADH1.
Predicted Reactive Species	Xenopus
Isotype	IgG1,kappa
Purification	This antibody is purified through a protein G column, followed by dialysis against PBS.
Suggested Dilutions	IF: 1:25 WB: 1:4000 IHC-P: 1:25

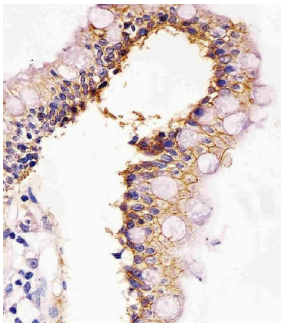
## Anti-CADH1 Antibody (M00063) Images



Immunofluorescent analysis of 4% paraformaldehyde-fixed, 0.1% Triton X-100 permeabilized MCF-7 (human breast cancer cell line) cells labeling CADH1 with M00063 at 1/25 dilution, followed by Dylight® 488-conjugated goat anti-mouse IgG secondary antibody at 1/200 dilution (green). Immunofluorescence image showing membrane and weak cytoplasm staining on MCF-7 cell line. The nuclear counterstain is DAPI (blue).



All lanes : Anti-CADH1 Antibody at 1:4000 dilution  
Lane 1: A431 whole cell lysate  
Lane 2: T47D whole cell lysate  
Lysates/proteins at 20 µg per lane. Secondary Goat Anti-mouse IgG, (H+L), Peroxidase conjugated at 1/10000 dilution. Predicted band size : 97 kDa  
Blocking/Dilution buffer: 5% NFDN/TBST.



M00063 staining CADH1 in human colon tissue sections by Immunohistochemistry (IHC-P -paraformaldehyde-fixed, paraffin-embedded sections). Tissue was fixed with formaldehyde and blocked with 3% BSA for 0.5 hour at room temperature; antigen retrieval was by heat mediation with a citrate buffer (pH6). Samples were incubated with primary antibody (1/25) for 1 hours at 37°C. A undiluted biotinylated goat polyvalent antibody was used as the secondary antibody.

## 11 Publications Citing This Product

1. PubMed ID: 26622610, RhoC is essential in TGF- $\beta$ 1 induced epithelial-mesenchymal transition in cervical cancer cells.
2. PubMed ID: 23437163, Shen R, Xie F, Shen H, Liu Q, Zheng T, Kou X, Wang D, Yang J. Plos One. 2013;8(2):E56542. Doi: 10.1371/Journal.Pone.0056542. Epub 2013 Feb 20. Negative Correlation Of Liv-1 And E-Cadherin Expression In Hepatocellular Carcinoma Cells.
3. PubMed ID: 27013894, Overexpression of Livin promotes migration and invasion of colorectal cancer cells by induction of epithelial-mesenchymal transition via NF- $\kappa$ B activation

Visit [bosterbio.com/anti-cadh1-antibody-m00063-boster.html](http://bosterbio.com/anti-cadh1-antibody-m00063-boster.html) to see all 11 publications.

## Submit a product review to Biocompare.com

Submit a review of this product to Biocompare.com to receive a \$20 Amazon.com giftcard! Your



reviews help your fellow scientists make the right decisions. Thank you for your contribution.

### Anti-CADH1 Antibody

For Research Use Only. Not for use in diagnostic procedures.